



PARTS BOOK

EXCAVATOR HEADS

• ROTARY •

DIAMOND MOWERS, Inc.
350 E 60th St. North
Sioux Falls, SD 57104

FOR WARRANTY CALL DIAMOND MOWERS DIRECT:
888-960-0364

OUR TECHNICIANS WILL DIAGNOSE YOUR SITUATION
OVER THE PHONE TO GET YOU UP AND RUNNING QUICKLY.

Phone: 605-977-3300
Fax: 605-655-5870
www.diamondmowers.com

DEMAND BRILLIANCE.

© DIAMOND MOWERS, INC.



Foreword

This manual contains the parts breakdown and identification of the various components and structures that make up your mower implement.

The illustrations, drawings, and diagrams in this manual are based on the latest information available at the time of publication. Your machine may have product improvements and features not yet contained in this parts manual.

Diamond Mowers Inc. reserves the right to make changes at any time without notice or obligation.

Diamond Mowers Inc.[™] and Wetblade[™] are trademarks of Diamond Mowers Inc.

This manual should be consulted prior and while assembling the unit, and anytime parts or assembly clarification is needed.

Copyright© 2016 Diamond Mowers Inc.

All rights reserved. While every precaution has been taken in the preparation of this manual, the publisher assumes no responsibility for errors or omissions. No part of this book covered by the copyrights heron may be reproduced or copied in any form or by any means - graphic, electronic, or mechanical, including photocopying, taping, or information storage and retrieval systems - without written permission of the publisher.



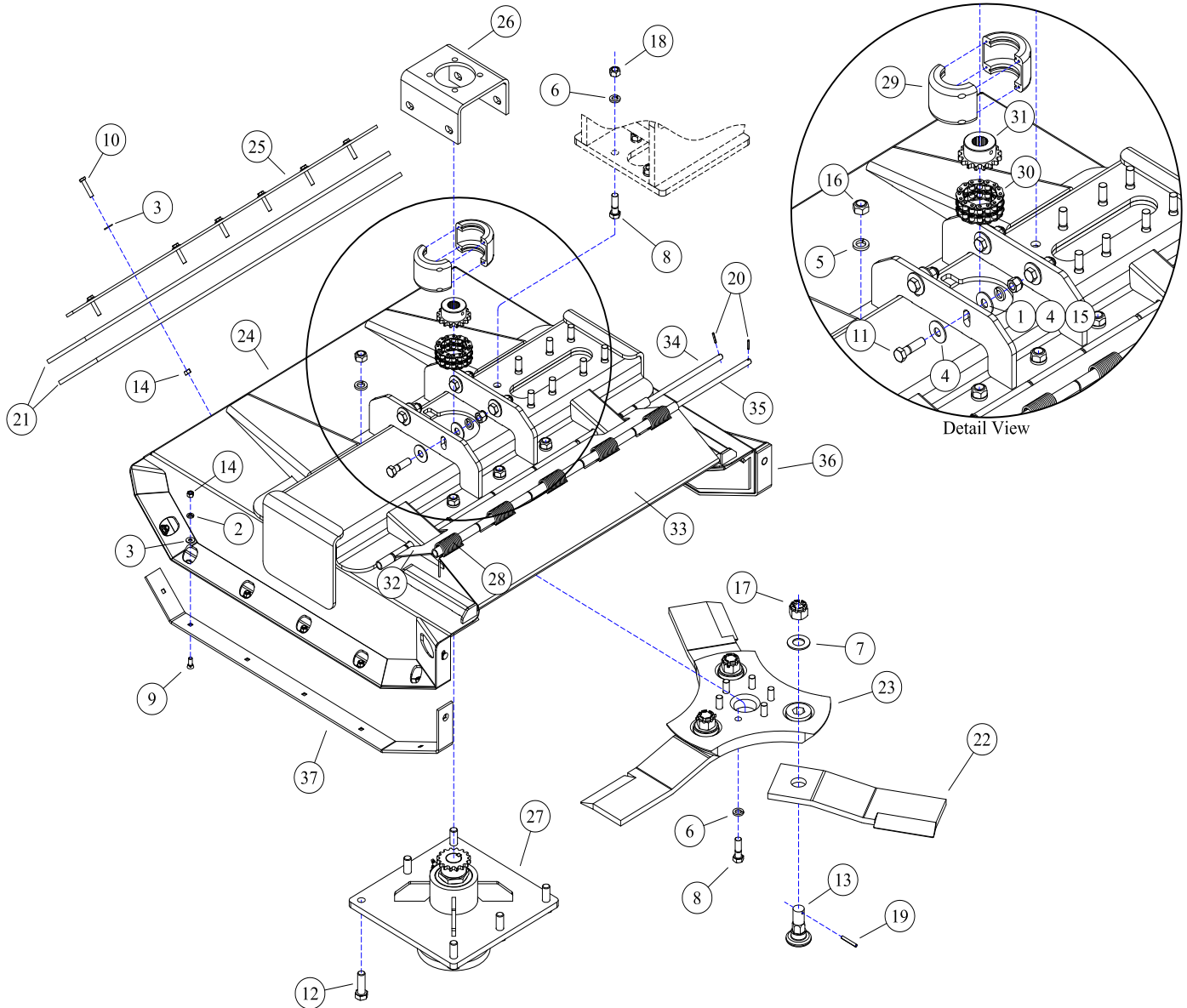
Table of Contents

ROTARY HEADS	4
EXCAVATOR ROTARY HEAD - 40" INDIRECT DRIVE.....	5
EXCAVATOR ROTARY HEAD - 50" DIRECT DRIVE.....	6
EXCAVATOR ROTARY HEAD - 60" DIRECT DRIVE.....	7
EXCAVATOR WETBLADE™ HEAD - 60" DIRECT DRIVE.....	8
EXCAVATOR ROTARY HEAD - 72" DIRECT DRIVE.....	9
DRIVE ASSEMBLIES	10
HOW TO DETERMINE YOUR MOTOR PART NUMBER.....	11
DRIVE ASSEMBLY - 40".....	12
DRIVE ASSEMBLY - 50", 20-46GPM.....	13
DRIVE ASSEMBLY - 60", 17-28GPM.....	14
DRIVE ASSEMBLY - 60", 20-46GPM.....	15
DRIVE ASSEMBLY - 72", 16-41GPM.....	16
DRIVE ASSEMBLY - 72", 17-25GPM.....	17
DRIVE ASSEMBLY - 72", 26-32GPM.....	18
DECK ASSEMBLIES	19
30-0514 - MOTOR ASSEMBLY.....	20
30-0515 - MOTOR ASSEMBLY.....	21
30-0518 - MOTOR ASSEMBLY.....	22
30-0520 - MOTOR ASSEMBLY.....	23
30-0524 - MOTOR ASSEMBLY.....	24
30-0525 - MOTOR ASSEMBLY.....	25
30-0526 - MOTOR ASSEMBLY.....	26
30-0527 - MOTOR ASSEMBLY.....	27
30-0528 - MOTOR ASSEMBLY.....	28
30-0529 - MOTOR ASSEMBLY.....	29
30-0530 - MOTOR ASSEMBLY.....	30
30-0531 - MOTOR ASSEMBLY.....	31
30-0532 - MOTOR ASSEMBLY.....	32
35-0010 - INDIRECT DRIVE SPINDLE.....	33
35-0088 - DIRECT DRIVE SPINDLE.....	34
80-2542 - DIRECT DRIVE WETBLADE™ SPINDLE.....	35
WETBLADE™ ASSEMBLIES	36
WETBLADE™ PUMP SYSTEM - LOW VOLUME.....	37
WETBLADE™ SYSTEM MOUNT - DRAWBAR.....	38

ROTARY HEADS



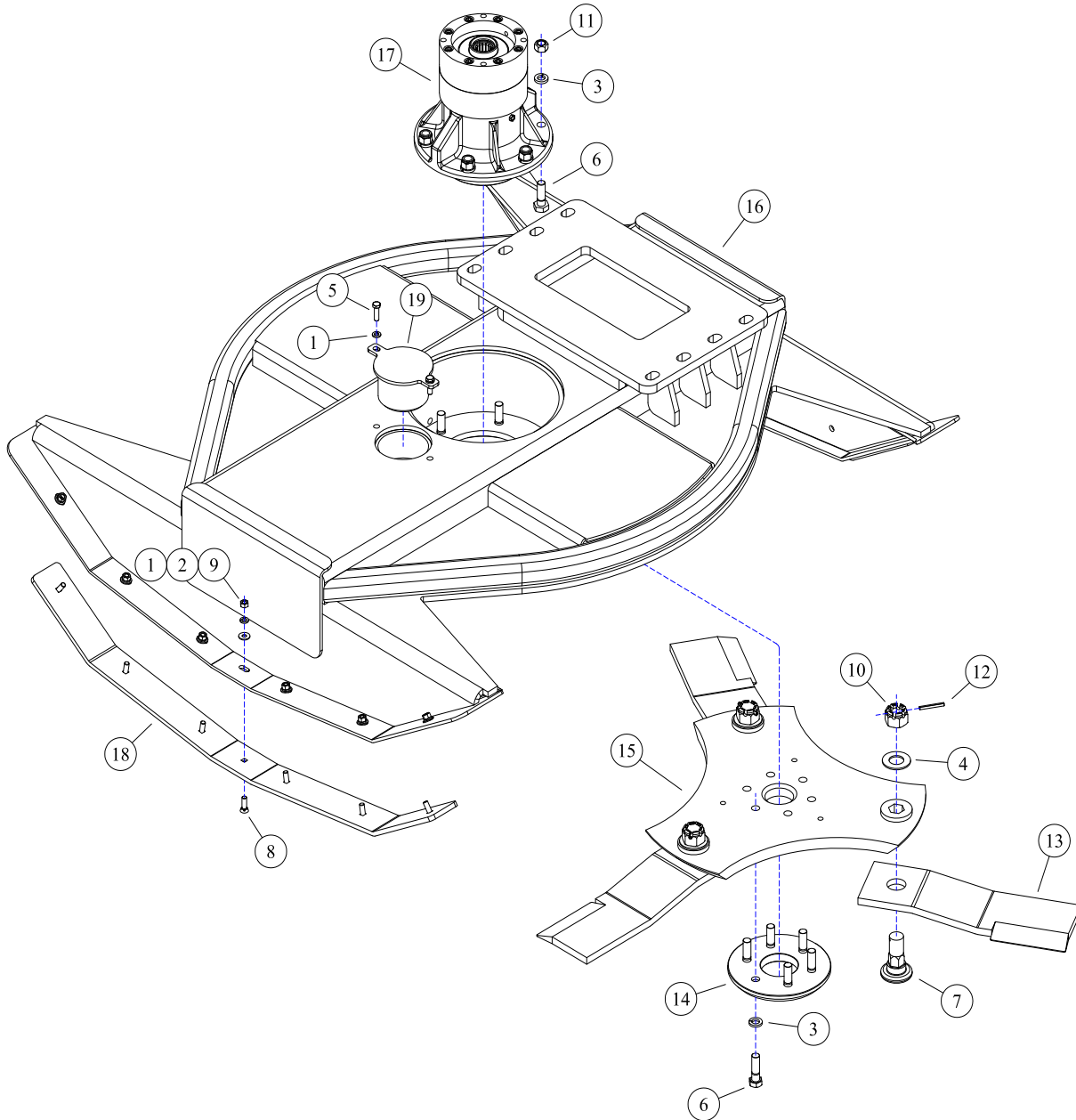
EXCAVATOR ROTARY HEAD - 40" INDIRECT DRIVE



REF#	PARTS DESCRIPTION	REQ	PART #
1	5/8 LOCK WASHER GR 5	4	11-0004
2	3/8 LOCK WASHER GR 5	14	11-0005
3	5/16 FLAT WASHER GR 5	21	11-0015
4	5/8 FLAT WASHER GR 5	8	11-0025
5	3/4 LOCK WASHER GR 8	6	11-0040
6	5/8 LOCK WASHER GR 8	14	11-0043
7	1-1/8 SAE FLAT WASHER GR 8	3	11-0057
8	5/8 X 2 H.S. NF HEX CAPSCREW	14	11-0508
9	3/8 X 1 NC PLOW BOLT H.S.	14	11-0511
10	3/8 X 1-3/4 NC HEX CAPSCREW	7	11-0521
11	5/8 X 2-1/4 NC HEX CAPSCREW	4	11-0631
12	3/4 X 2-1/4 NF H.S. HEX CAPSCREW	6	11-0658
13	BLADE BOLT - HEX BASE	3	11-0759
14	3/8 NC HEX NUT	21	11-1001
15	5/8 NC NYLOCK NUT	4	11-1025
16	3/4 NF H.S. STOVER NUT	6	11-1032
17	1-1/8 NF CASTLE NUT	3	11-1050
18	5/8 H.S. NF STOVER NUT	8	11-1143
19	1/4 X 2 ROLL PIN	3	11-2005

REF#	PARTS DESCRIPTION	REQ	PART #
20	5/32 X 1 ROLL PIN	4	11-2054
21	FLAP	2	18-0067
22	5/8" BRUSH KNIFE	3	22-0006
23	40" HEAVY TRI-HEX DISH	1	24-0154
24	40" EXCAVATOR DECK	1	25-0146
25	FLAP RETAINING BAR	1	31-0205
26	MOTOR MOUNT	1	31-0242
27	SPINDLE ASSEMBLY	1	35-0010
28	TORSION SPRING	5	36-0003
29	COVER COUPLING	1	37-0004
30	CHAIN COUPLING	1	37-0006
31	1-1/4 SPROCKET	1	37-0031
32	REAR SHIELD	1	41-0816
33	FRONT SHIELD	1	41-0817
34	TRAP DOOR ROD - REAR	1	41-0818
35	TRAP DOOR ROD - FRONT	1	41-0819
36	LEFT SKID SHOE	1	42-0034
37	RIGHT SKID SHOE	1	42-0035

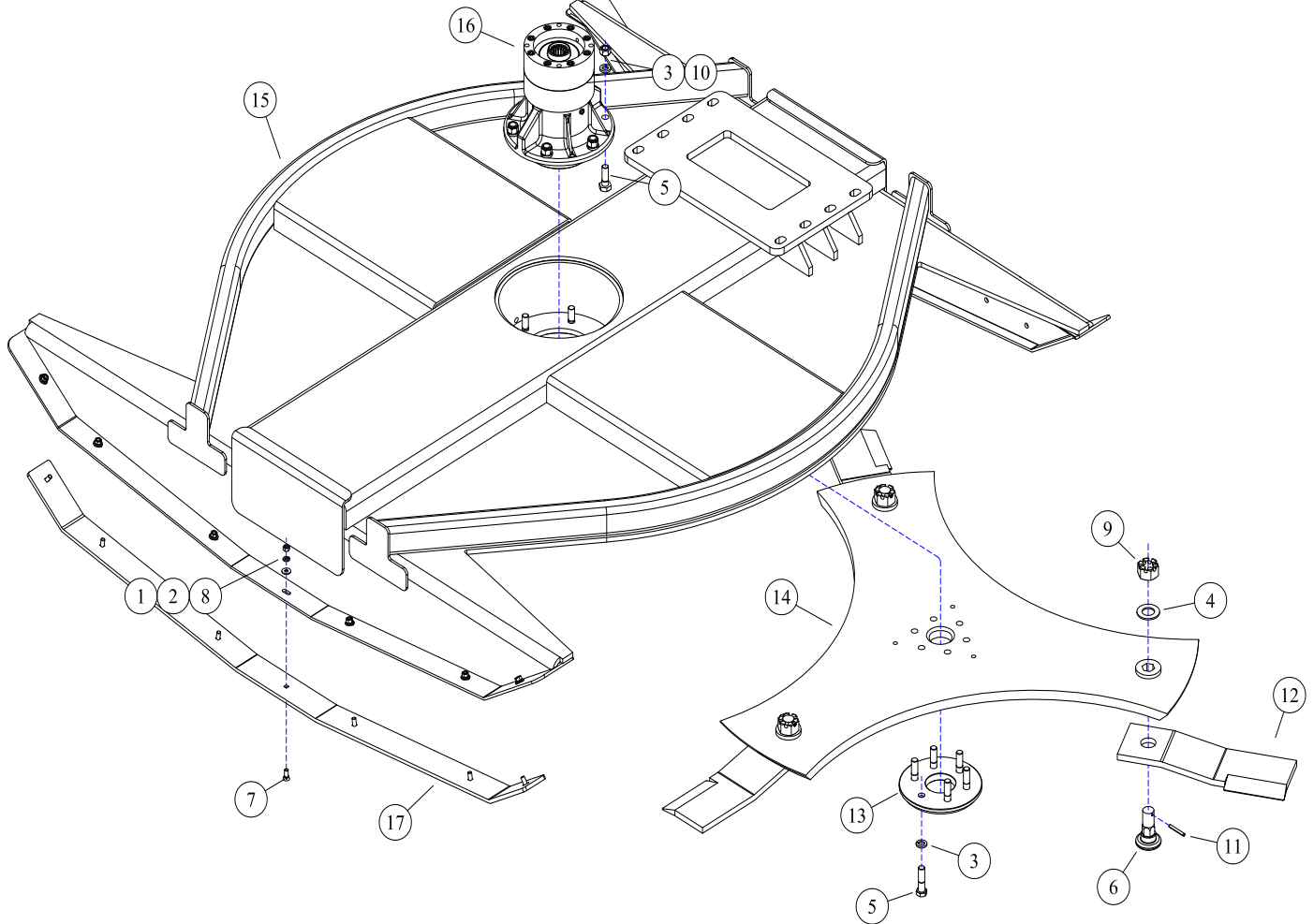
EXCAVATOR ROTARY HEAD - 50" DIRECT DRIVE



REF#	PARTS DESCRIPTION	REQ	PART #
1	3/8 LOCK WASHER	16	11-0005
2	3/8 FLAT WASHER	14	11-0009
3	5/8 H.S. LOCK WASHER	12	11-0043
4	1-1/8 H.S. SAE FLAT WASHER	3	11-0057
5	3/8 X 1-1/4 NC HEX CAPSCREW	2	11-0533
6	5/8 X 2-1/4 H.S. NF HEX CAPSCREW	12	11-0691
7	BLADE BOLT - HEX BASE	3	11-0759
8	3/8 X 1-1/4 NC PLOW BOLT	14	11-0804
9	3/8 NC HEX NUT	14	11-1001
10	1-1/8 H.S. NF SLOTTED HEX NUT	3	11-1050

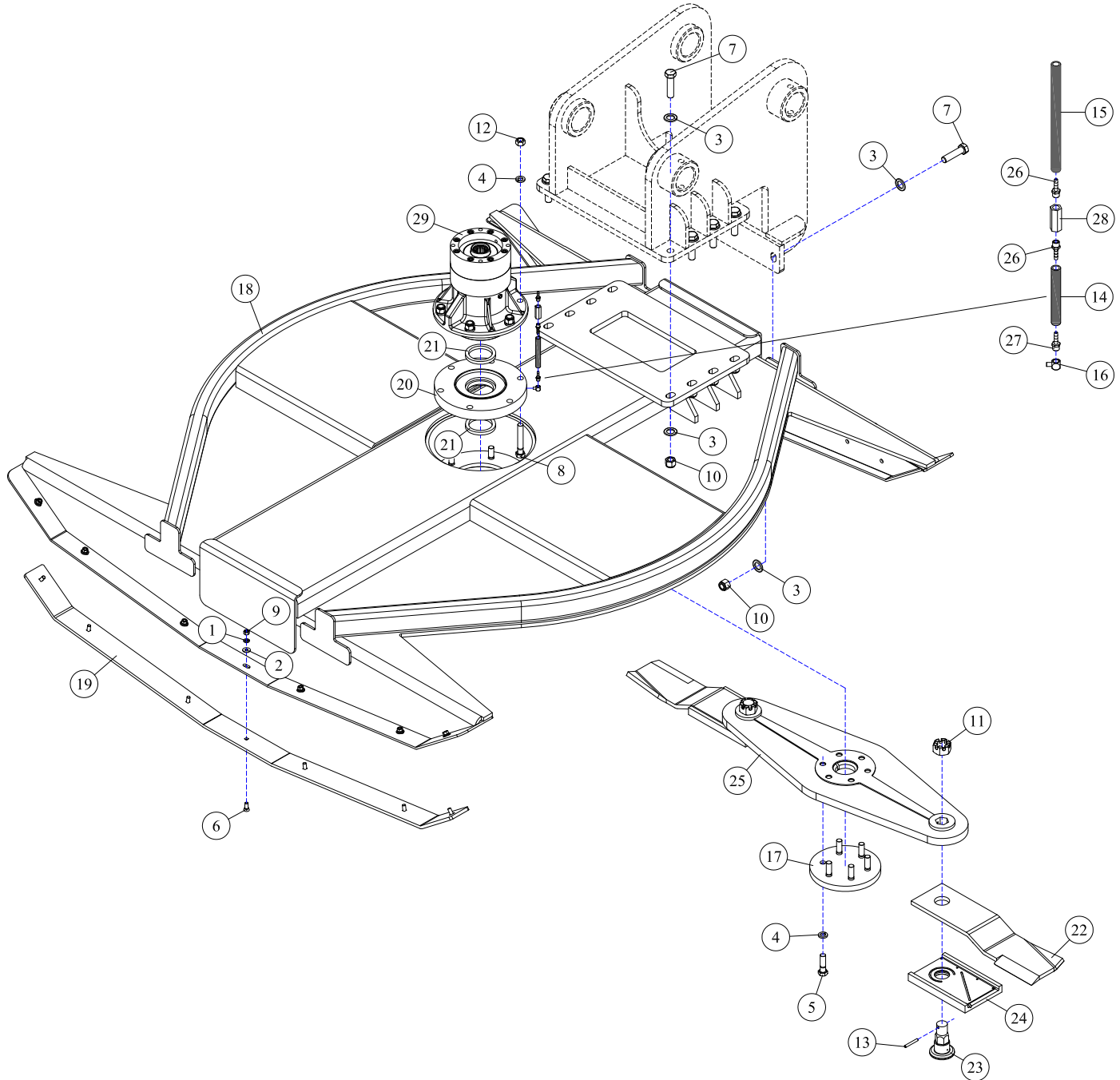
REF#	PARTS DESCRIPTION	REQ	PART #
11	5/8 H.S. NF STOVER NUT	6	11-1143
12	ROLL PIN, 1/4 X 2	3	11-2005
13	5/8" BRUSH BLADE	3	22-0006
14	BOLT PROTECTOR	1	24-0004
15	DISH	1	24-0085
16	50" DECK SHELL	1	25-0142
17	SPINDLE ASSEMBLY	1	35-0088
18	SKID SHOE	2	42-0039
19	ACCESS PORT COVER	1	80-3507

EXCAVATOR ROTARY HEAD - 60" DIRECT DRIVE



REF#	PARTS DESCRIPTION	REQ	PART #
1	3/8 LOCK WASHER	14	11-0005
2	3/8 FLAT WASHER	14	11-0009
3	5/8 H.S. LOCK WASHER	12	11-0043
4	1-1/8 H.S. SAE FLAT WASHER	3	11-0057
5	5/8 X 2-1/4 H.S. NF HEX CAPSCREW	12	11-0691
6	BLADE BOLT - HEX BASE	3	11-0759
7	3/8 X 1-1/4 PLOW BOLT	14	11-0804
8	3/8 NC HEX NUT	14	11-1001
9	1-1/8 H.S. NF SLOTTED HEX NUT	3	11-1050
10	5/8 H.S. NF STOVER NUT	6	11-1143
11	ROLL PIN, 1/4 X 2	3	11-2005
12	5/8" BRUSH BLADE	3	22-0006
13	BOLT PROTECTOR	1	24-0004
14	DISH	1	24-0145
15	60" DECK SHELL	1	25-0135
16	SPINDLE ASSEMBLY	1	35-0088
17	SKID SHOE	2	42-0037

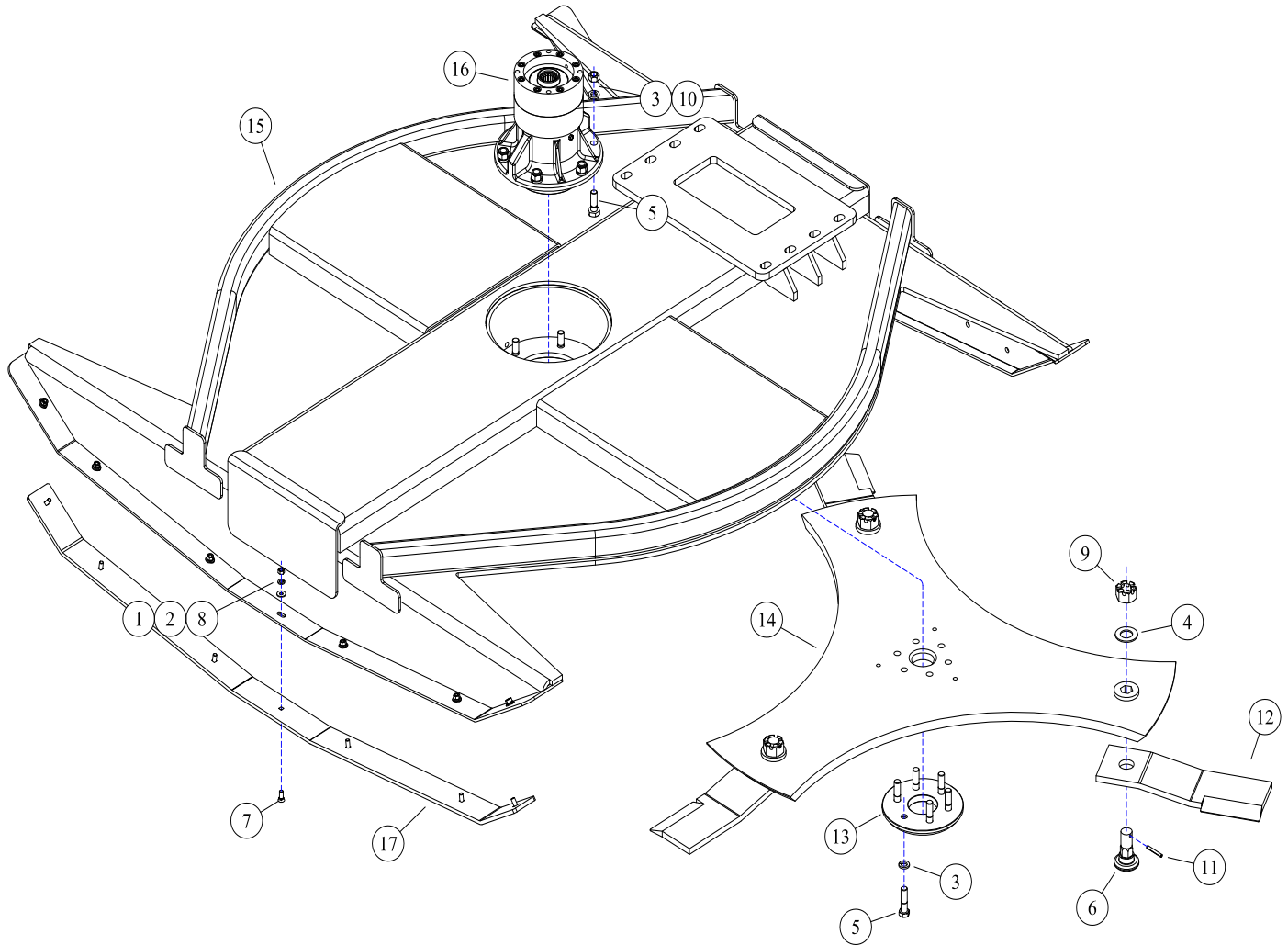
EXCAVATOR WETBLADE™ HEAD - 60" DIRECT DRIVE



REF#	PARTS DESCRIPTION	REQ	PART #
1	3/8 LOCK WASHER GR 5	14	11-0005
2	3/8 FLAT WASHER GR 5	14	11-0009
3	3/4 SAE FLAT WASHER GR 8	20	11-0039
4	5/8 LOCK WASHER GR 8	12	11-0043
5	5/8 X 2-1/4 H.S. NF HEX CAPSCREW	6	11-0691
6	3/8 X 1-1/4 NC PLOW BOLT	14	11-0804
7	3/4 X 3 H.S. NC HEX CAPSCREW	10	11-0900
8	5/8 X 4 H.S. NF HEX CAPSCREW	6	11-0908
9	3/8 NC HEX NUT	14	11-1001
10	3/4 H.S. NC STOVER NUT	10	11-1038
11	1-1/4NF SLOTTED HEX NUT, GR 8	2	11-1064
12	5/8 H.S. NF STOVER NUT	6	11-1143
13	1/4 ROLL PIN	2	11-2005
14	HOSE, 3/16 FUEL LINE	1	21-0026
15	HOSE, 3/16 X 72 FUEL LINE	1	21-0035

REF#	PARTS DESCRIPTION	REQ	PART #
16	1/4-28 X1/8NPT-90DEG, ADAPTER	1	21-1530
17	BOLT PROTECTOR	1	24-0004
18	60" DECK SHELL	1	25-0135
19	SKID SHOE	2	42-0037
20	WETBLADE FLUID PLATE, SPINDLE	1	80-1040
21	2.75 X 3.5 X .375 SEAL	2	80-1044
22	60" WETBLADE KNIFE	2	80-1529
23	WETBLADE BOLT	2	80-1532
24	60" WETBAR	2	80-1543
25	60" WETBLADE DISH	1	80-1556
26	3/16 BARBED X 1/4NPT ADAPTER	2	80-2016
27	3/16 BARBED X 1/8NPT ADAPTER	1	80-2041
28	1/4FNPT X 1/4FNPTCHECK VALVE	1	80-2541
29	WETBLADE SPINDLE	1	80-2542

EXCAVATOR ROTARY HEAD - 72" DIRECT DRIVE



REF#	PARTS DESCRIPTION	REQ	PART #
1	3/8 LOCK WASHER	14	11-0005
2	3/8 FLAT WASHER	14	11-0009
3	5/8 H.S. LOCK WASHER	12	11-0043
4	1-1/8 H.S. SAE FLAT WASHER	3	11-0057
5	5/8 X 2-1/4 H.S. NF HEX CAPSCREW	12	11-0691
6	BLADE BOLT - HEX BASE	3	11-0759
7	3/8 X 1-1/4 PLOW BOLT	14	11-0804
8	3/8 NC HEX NUT	14	11-1001
9	1-1/8 H.S. NF SLOTTED HEX NUT	3	11-1050
10	5/8 H.S. NF STOVER NUT	6	11-1143
11	ROLL PIN, 1/4 X 2	3	11-2005
12	5/8" BRUSH BLADE	3	22-0006
13	BOLT PROTECTOR	1	24-0004
14	DISH	1	24-0151
15	72" DECK SHELL	1	25-0132
16	SPINDLE	1	35-0088
17	SKID SHOE	2	42-0036

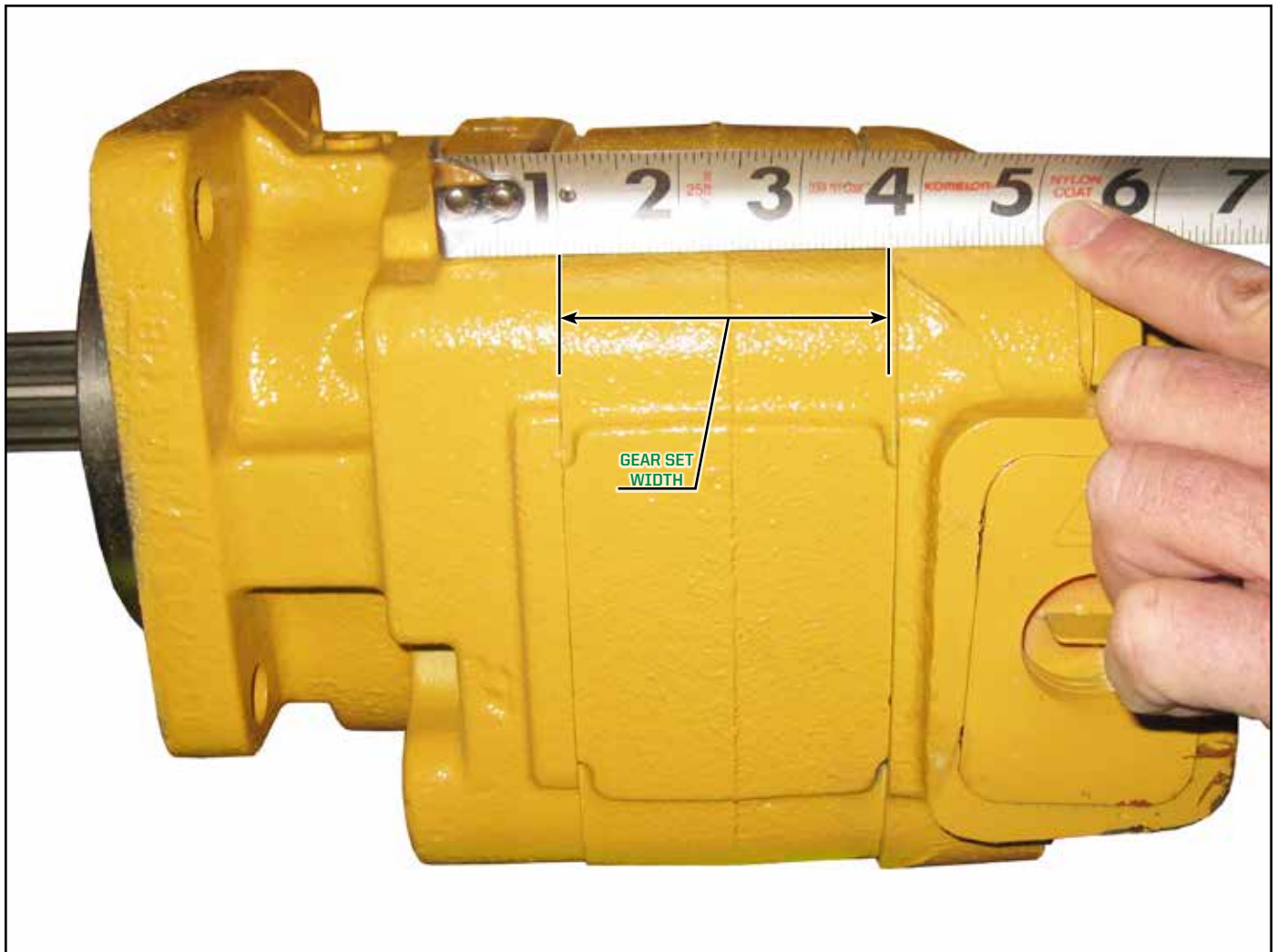
DRIVE ASSEMBLIES



HOW TO DETERMINE YOUR MOTOR PART NUMBER

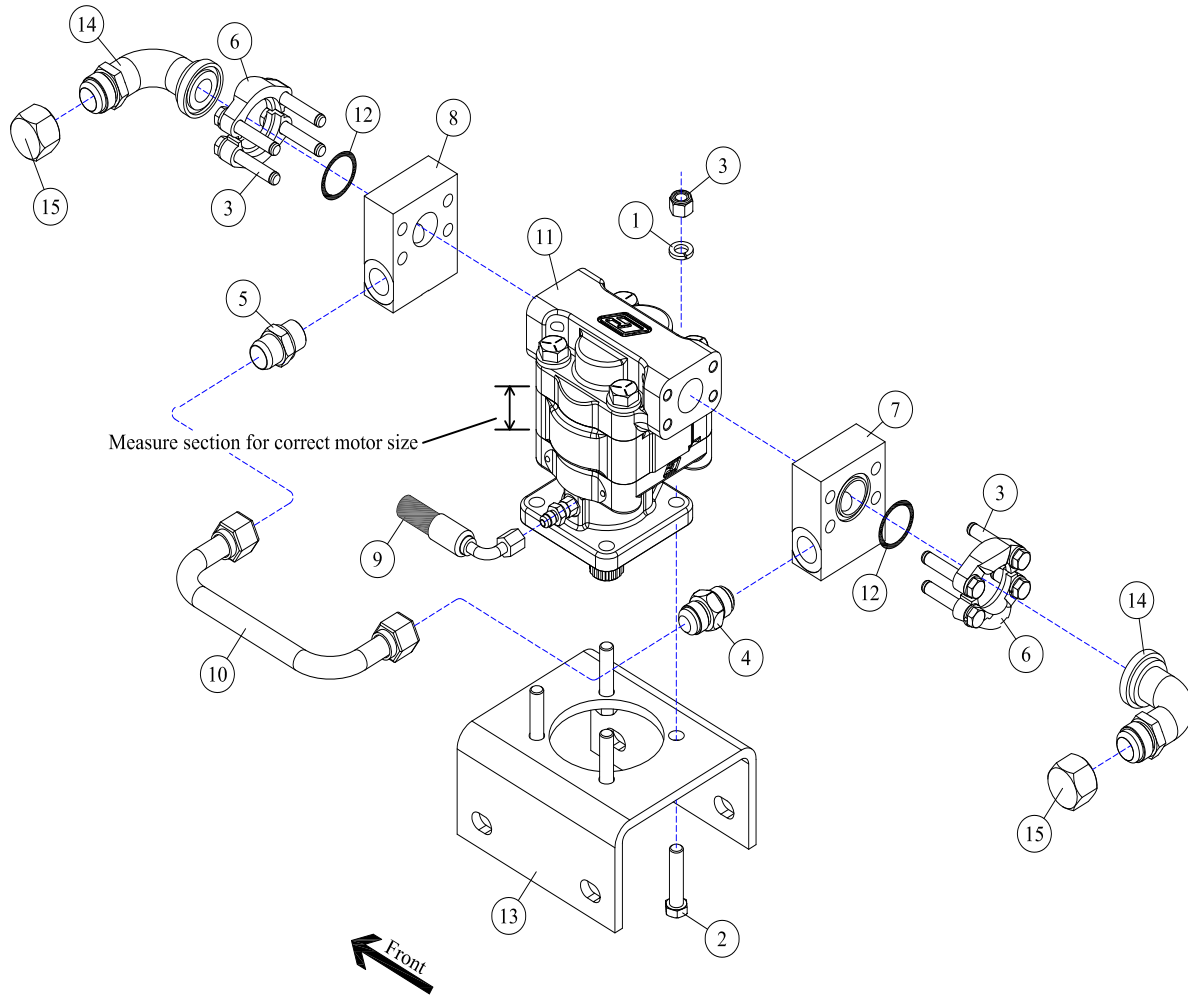
Note: The following parts pages in the **DRIVE ASSEMBLIES** section have multiple motor options; to identify which motor you have, follow the instructions below: you will have to first determine your vehicles hydraulic oil GPM requirements (i.e. 16-41gpm).

- ▷ Determine what your hydraulic oil flow requirements are for your vehicle in gallons per minute (GPM).
- ▷ Locate the **Drive Assemblies** page in the table of contents in the front of this manual that has a GPM range consistent with your vehicle's GPM requirements, and go to that page. Locate your motor part number.
- ▷ If multiple motor options and part numbers are available on your parts page, measure the width of the gear set portion of your motor to determine which part number is correct for your motor. Measure the gear set as shown in the illustration below *(see Figure 1)*.



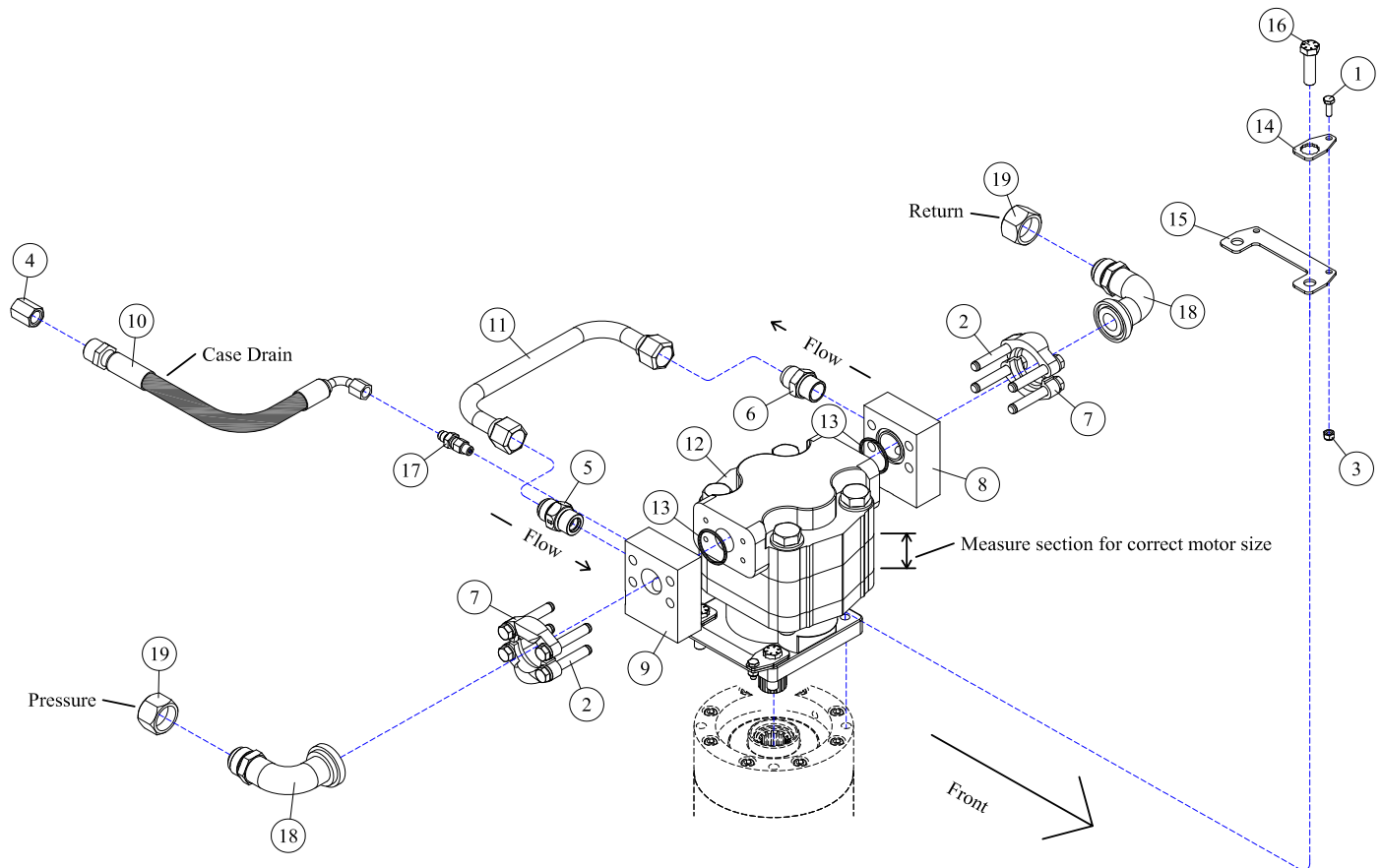
Motor - (Figure 1)

DRIVE ASSEMBLY - 40"



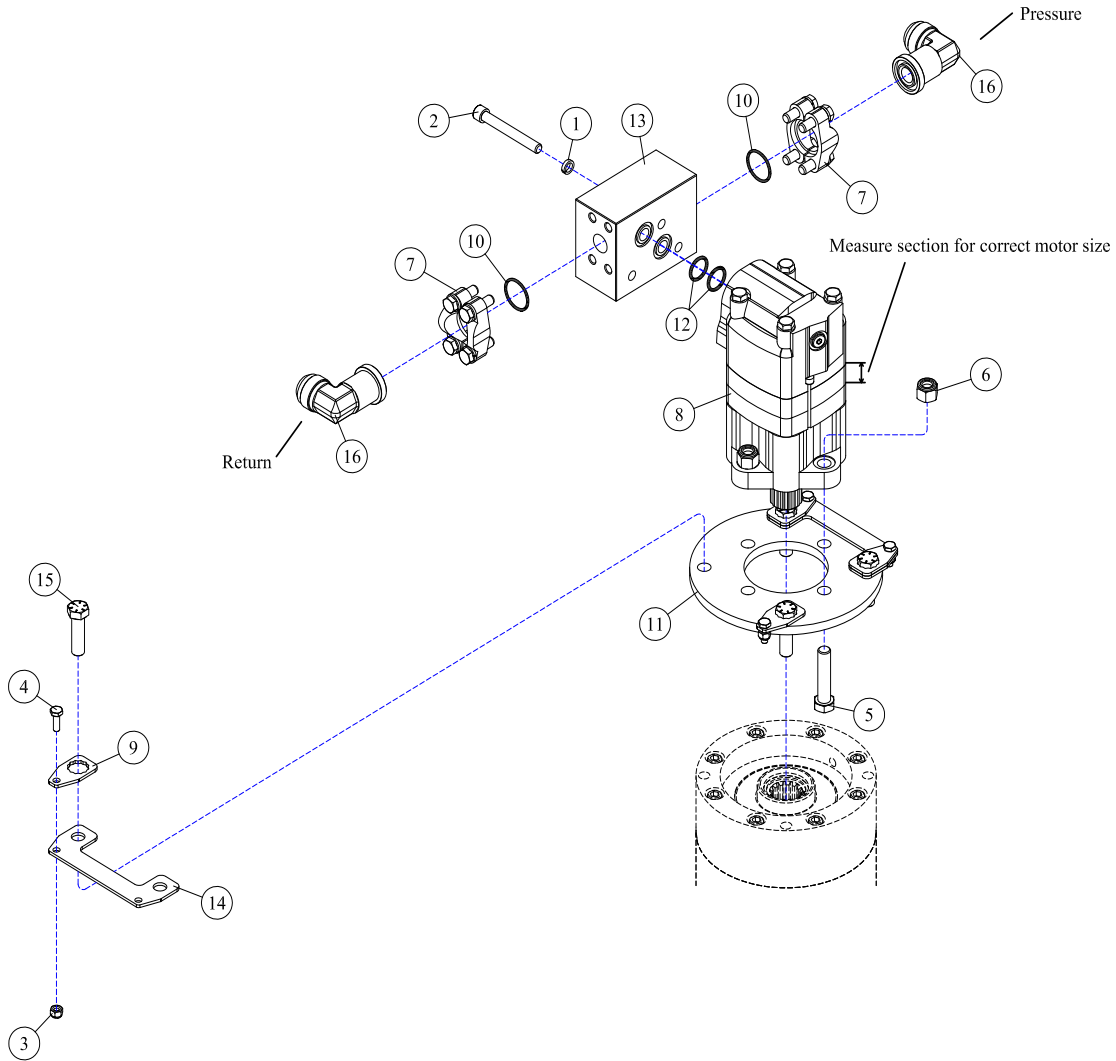
REF#	PARTS DESCRIPTION	REQ	PART #
1	1/2 LOCK WASHERS	4	11-0011
2	1/2 X 2-1/4 NC HEX CAPSCREW	4	11-0531
3	7/16 X 3 NC HEX CAPSCREW (included with #7 & 8)	4	11-0587
4	CHECK VALVE	1	21-1474
5	3/4 MORB X 3/4 MJIC ADAPTER	1	21-1475
6	#20 FLANGE KIT (included with #7 & 8)	2	21-2105
7	CROSS OVER MANIFOLD KIT (includes #3,6 & 12)	1	21-2180
8	TEE MANIFOLD KIT (includes #3,6 & 12)	1	21-2181
9	HOSE 3/8 X 24 (3/8FJIC 90DEG X 3/8MJIC)	1	21-4291
10	RUN-AROUND TUBE	1	28-0061
11	MOTOR		
	M330, 1" GEAR SET, 1-1/2" SECT, 16-21 GAL/MIN	1	30-0530
	M330, 1-1/4" GEAR SET, 1-3/4" SECT, 22-25 GAL/MIN	1	30-0525
	M330, 1-1/2" GEAR SET, 2" SECT, 26-29 GAL/MIN	1	30-0526
	M330, 1-3/4" GEAR SET, 2-1/4" SECT, 30-34 GAL/MIN	1	30-0531
12	O-RING (included with #6, 7 & 8)	2	33-0013
13	MOTOR MOUNT	1	31-0242
14	ADAPTER,#20FLG X 1MJIC 90DEG	2	21-1267
15	1FJIC CAP NUT	2	21-1454

DRIVE ASSEMBLY - 50", 20-46GPM



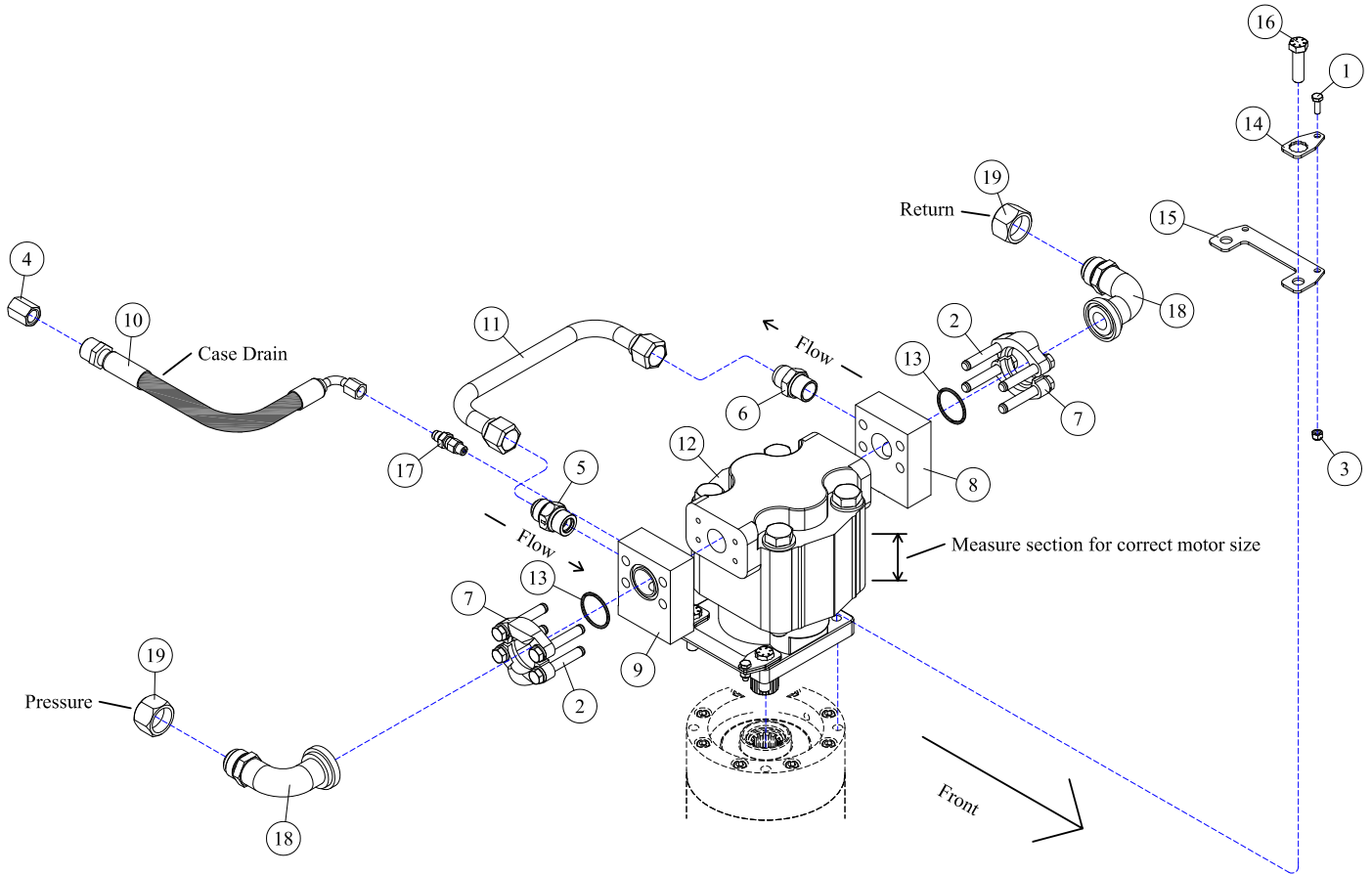
REF#	PARTS DESCRIPTION	REQ	PART #
1	1/4 X 3/4 NC HEX CAP	4	11-0588
2	7/16 X 3 NC HEX CAPSCREW (included with #8 & 9)	4	11-0587
3	1/4 NC NYLOCK NUT	4	11-1022
4	3/8FJIC CAP NUT	1	21-1582
5	CHECK VALVE	1	21-1474
6	3/4 MORB X 3/4 MJIC ADAPTER	1	21-1475
7	#20 FLANGE KIT (included with #8 & 9)	2	21-2105
8	CROSS OVER MANIFOLD KIT (includes #2,7 & 13)	1	21-2180
9	TEE MANIFOLD KIT (includes #2,7 & 13)	1	21-2181
10	HOSE 3/8 X 24 (3/8FJIC 90DEG X 3/8MJIC)	1	21-4291
11	RUN-AROUND TUBE	1	28-0051
12	MOTOR		
	M365, 1" GEAR SET, 1-1/2" SECT, 20-28 GAL/MIN	1	30-0514
	M365, 1-1/4" GEAR SET, 1-3/4" SECT, 29-34 GAL/MIN	1	30-0532
	M365, 1-1/2" GEAR SET, 2" SECT, 35-40 GAL/MIN	1	30-0515
	M365, 1-3/4" GEAR SET, 2-1/4" SECT, 41-46 GAL/MIN	1	30-0520
13	O-RING (included with #7, 8 & 9)	2	33-0013
14	MOTOR BOLT LOCK TAB	4	31-0503
15	MOTOR BOLT LOCK BASE	2	31-0504
16	1/2-20 X 1-3/4 H.S. NF HEX CAP GR.8	4	11-0664
17	ADAPTER, 1/4MOR X 3/8MJIC	1	21-1597
18	ADAPTER,#20FLG X 1MJIC 90DEG	2	21-1267
19	1FJIC CAP NUT	2	21-1454

DRIVE ASSEMBLY - 60", 17-28GPM



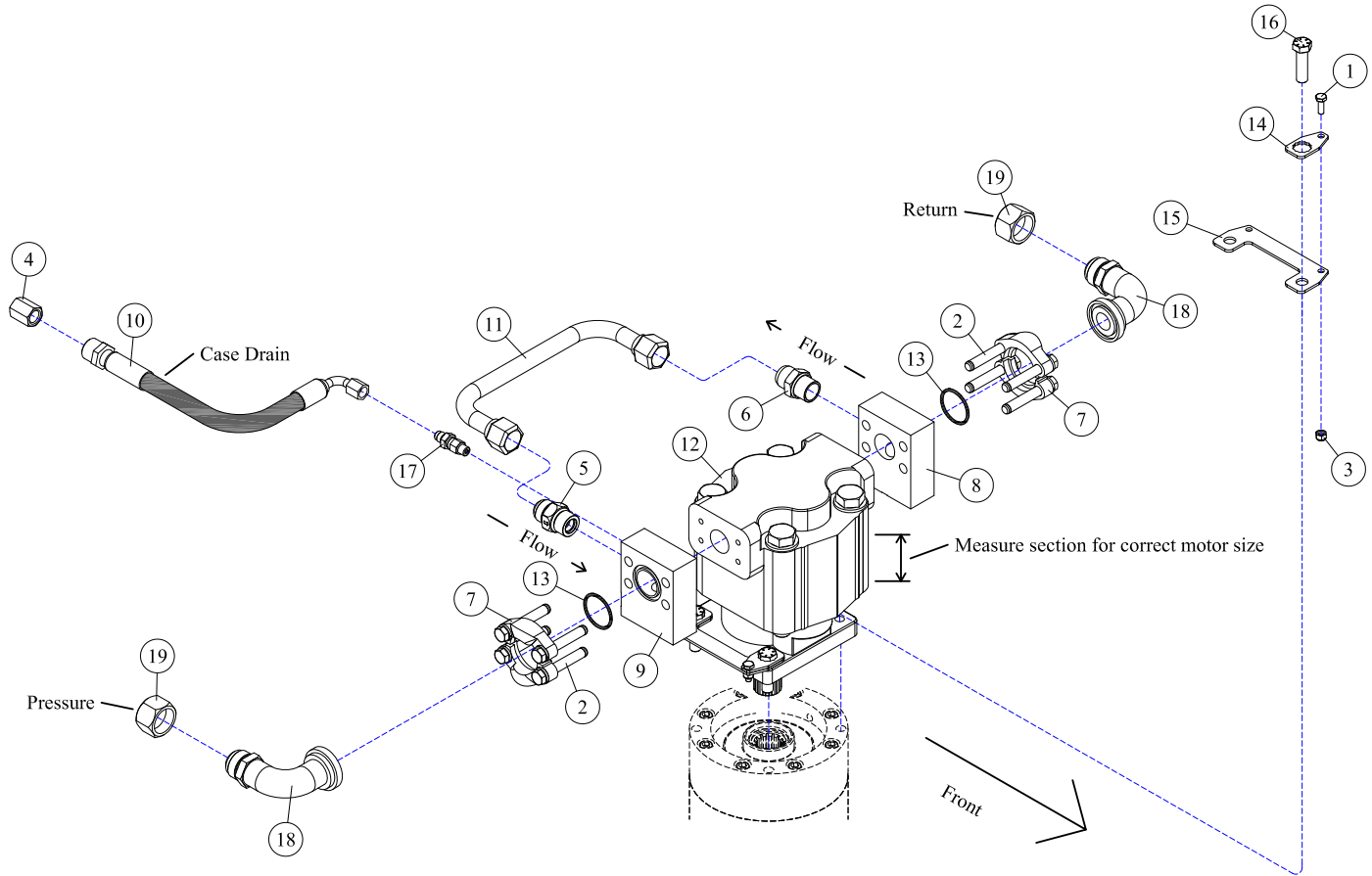
REF#	PARTS DESCRIPTION	REQ	PART #
1	3/8 HI-COLLAR LOCK WASHER	3	11-0054
2	3/8 X 2-1/2 NC SOCKET HEAD CAPSCREW	3	11-0701
3	1/4 NC NYLOCK NUT	4	11-1022
4	1/4 X 3/4 NC HEX CAP	4	11-0588
5	1/2 X 2-1/4 NC HEX CAPSCREW	4	11-0531
6	1/2 NC NYLOCK NUT	4	11-1018
7	#12 FLANGE KIT (includes #33-0062)	2	21-2186
8	MOTOR (includes #30-1206)		
	2000 SERIES, 11/16" SECT, 17-23 GAL/MIN	1	30-0528
	2000 SERIES, 7/8" SECT, 24-28 GAL/MIN	1	30-0529
9	MOTOR BOLT LOCK TAB	4	31-0503
10	O-RING (LARGE) (included with #21-2186)	2	33-0062
11	MOTOR SPACER	1	35-0075
12	O-RING (SMALL) (included with #30-1206)	2	30-1205
13	PRESSURE AND RETURN BLOCK (included with motors)	1	30-1206
14	MOTOR BOLT LOCK BASE	2	31-0504
15	1/2-20 X 1-3/4 H.S. NF HEX CAP GR.8	4	11-0664
16	FITTING, #12FLANGE X 1MJIC-90DEG	2	21-1302

DRIVE ASSEMBLY - 60", 20-46GPM



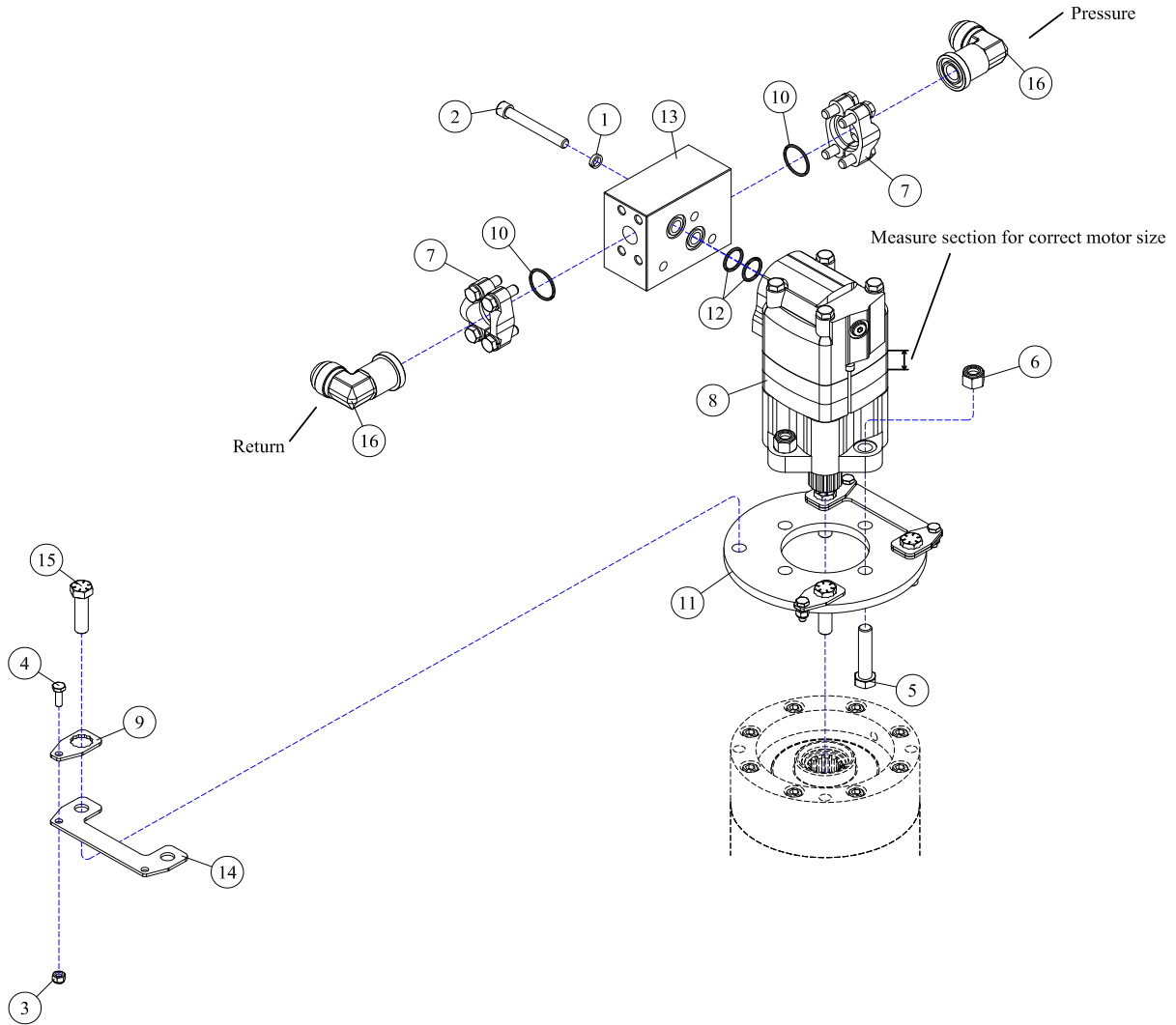
REF#	PARTS DESCRIPTION	REQ	PART #
1	1/4 X 3/4 NC HEX CAP	4	11-0588
2	7/16 X 3 NC HEX CAPSCREW (included with #8 & 9)	4	11-0587
3	1/4 NC NYLOCK NUT	4	11-1022
4	3/8FJIC CAP NUT	1	21-1582
5	CHECK VALVE	1	21-1474
6	3/4 MORB X 3/4 MJIC ADAPTER	1	21-1475
7	#20 FLANGE KIT (included with #8 & 9)	2	21-2105
8	CROSS OVER MANIFOLD KIT (includes #2,7 & 13)	1	21-2180
9	TEE MANIFOLD KIT (includes #2,7 & 13)	1	21-2181
10	HOSE 3/8 X 24 (3/8FJIC 90DEG X 3/8MJIC)	1	21-4291
11	RUN-AROUND TUBE	1	28-0051
12	MOTOR		
	M365, 1-1/2" GEAR SET, 2" SECT, 20-28 GAL/MIN	1	30-0515
	M365, 1-3/4" GEAR SET, 2-1/4" SECT, 29-35 GAL/MIN	1	30-0520
	M365, 2-1/4" GEAR SET, 2-3/4" SECT, 36-41 GAL/MIN	1	30-0524
	M365, 2-1/2" GEAR SET, 3" SECT, 42-46 GAL/MIN	1	30-0518
13	O-RING (included with #7, 8 & 9)	2	33-0013
14	MOTOR BOLT LOCK TAB	4	31-0503
15	MOTOR BOLT LOCK BASE	2	31-0504
16	1/2-20 X 1-3/4 H.S. NF HEX CAP GR.8	4	11-0664
17	ADAPTER, 1/4MOR X 3/8MJIC	1	21-1597
18	ADAPTER,#20FLG X 1MJIC 90DEG	2	21-1267
19	1FJIC CAP NUT	2	21-1454

DRIVE ASSEMBLY - 72", 16-41GPM



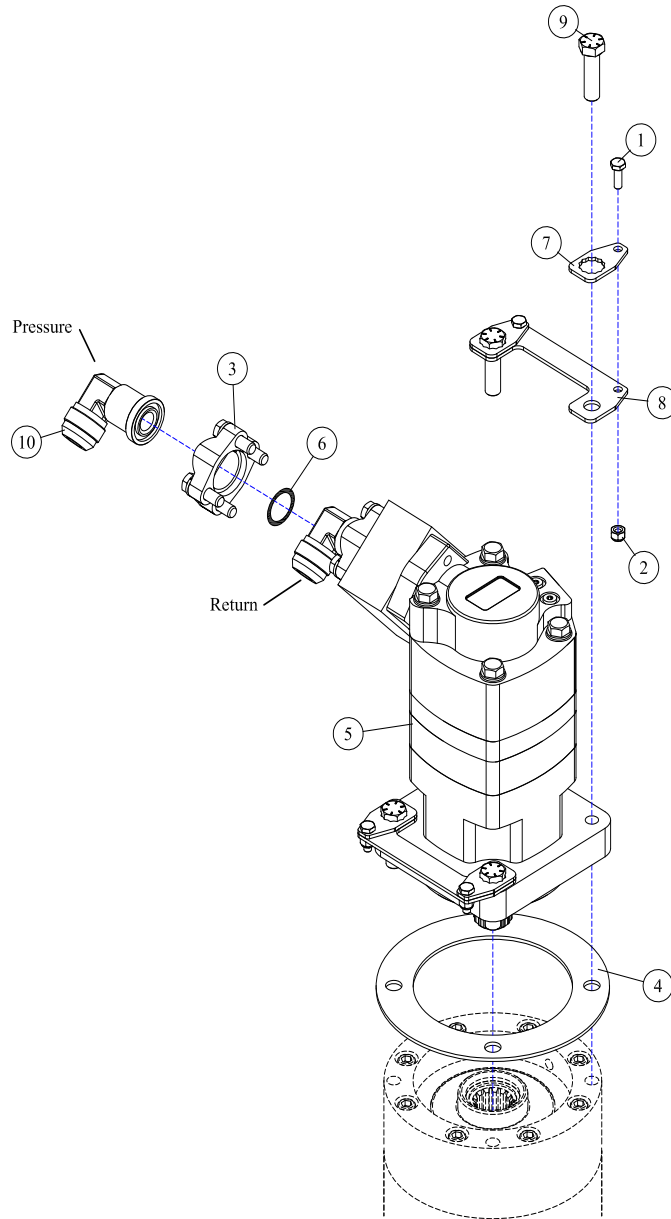
REF#	PARTS DESCRIPTION	REQ	PART #
1	1/4 X 3/4 NC HEX CAP	4	11-0588
2	7/16 X 3 NC HEX CAPSCREW (included with #8 & 9)	4	11-0587
3	1/4 NC NYLOCK NUT	4	11-1022
4	3/8FJIC CAP NUT	1	21-1582
5	CHECK VALVE	1	21-1474
6	3/4 MORB X 3/4 MJIC ADAPTER	1	21-1475
7	#20 FLANGE KIT (included with #8 & 9)	2	21-2105
8	CROSS OVER MANIFOLD KIT (includes #2,7 & 13)	1	21-2180
9	TEE MANIFOLD KIT (includes #2,7 & 13)	1	21-2181
10	HOSE 3/8 X 24 (3/8FJIC 90DEG X 3/8MJIC)	1	21-4291
11	RUN-AROUND TUBE	1	28-0051
12	MOTOR		
	M365, 1-1/2" GEAR SET, 2" SECT, 16-22 GAL/MIN	1	30-0515
	M365, 1-3/4" GEAR SET, 2-1/4" SECT, 23-28 GAL/MIN	1	30-0520
	M365, 2-1/4" GEAR SET, 2-3/4" SECT, 29-34 GAL/MIN	1	30-0524
	M365, 2-1/2" GEAR SET, 3" SECT, 35-41 GAL/MIN	1	30-0518
13	O-RING (included with #7, 8 & 9)	2	33-0013
14	MOTOR BOLT LOCK TAB	4	31-0503
15	MOTOR BOLT LOCK BASE	2	31-0504
16	1/2-20 X 1-3/4 H.S. NF HEX CAP GR.8	4	11-0664
17	ADAPTER, 1/4MOR X 3/8MJIC	1	21-1597
18	ADAPTER,#20FLG X 1MJIC 90DEG	2	21-1267
19	1FJIC CAP NUT	2	21-1454

DRIVE ASSEMBLY - 72", 17-25GPM



REF#	PARTS DESCRIPTION	REQ	PART #
1	3/8 HI-COLLAR LOCK WASHER	3	11-0054
2	3/8 X 2-1/2 NC SOCKET HEAD CAPSCREW	3	11-0701
3	1/4 NC NYLOCK NUT	4	11-1022
4	1/4 X 3/4 NC HEX CAP	4	11-0588
5	1/2 X 2-1/4 NC HEX CAPSCREW	4	11-0531
6	1/2 NC NYLOCK NUT	4	11-1018
7	#12 FLANGE KIT (includes #33-0062)	2	21-2186
8	MOTOR (includes #30-1206)		
	2000 SERIES, 11/16" SECT, 17-23 GAL/MIN	1	30-0528
	2000 SERIES, 7/8" SECT, 24-28 GAL/MIN	1	30-0529
9	MOTOR BOLT LOCK TAB	4	31-0503
10	O-RING (LARGE) (included with #21-2186)	2	33-0062
11	MOTOR SPACER	1	35-0075
12	O-RING (SMALL) (included with #30-1206)	2	30-1205
13	PRESSURE AND RETURN BLOCK (included with motors)	1	30-1206
14	MOTOR BOLT LOCK BASE	2	31-0504
15	1/2-20 X 1-3/4 H.S. NF HEX CAP GR.8	4	11-0664
16	FITTING, #12FLANGE X 1MJIC-90DEG	2	21-1302

DRIVE ASSEMBLY - 72", 26-32GPM

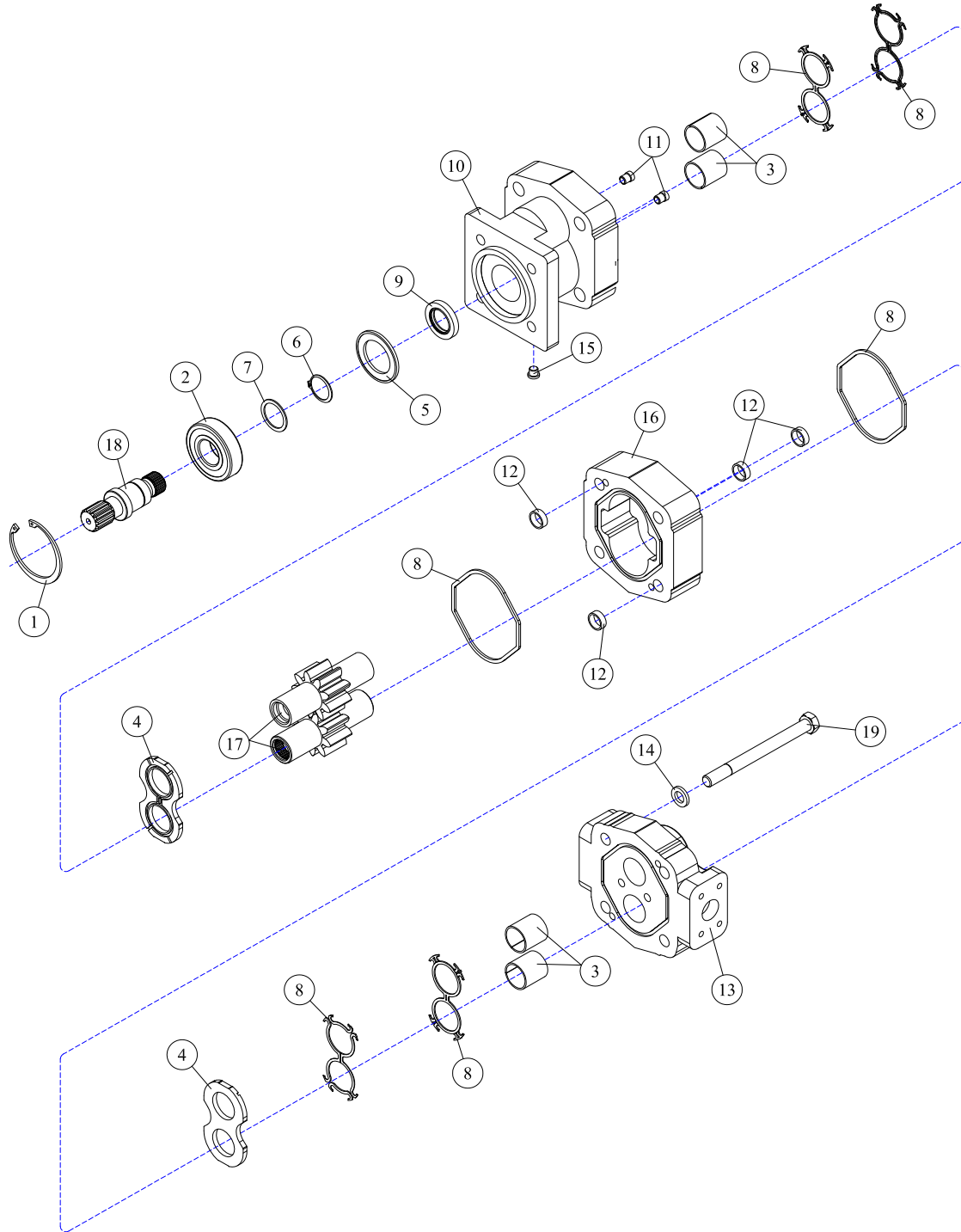


REF#	PARTS DESCRIPTION	REQ	PART #
1	1/4 X 3/4 NC HEX CAP	4	11-0588
2	1/4 NC NYLOCK NUT	4	11-1022
3	#12 FLANGE KIT	2	21-2186
4	MOTOR SPACER	1	35-0076
5	MOTOR		
	4000 SERIES, 25-32 GAL/MIN	1	30-0527
6	O-RING (included with #3)	2	33-0062
7	MOTOR BOLT LOCK TAB	4	31-0503
8	MOTOR BOLT LOCK BASE	2	31-0504
9	1/2-20 X 1-3/4 H.S. NF HEX CAP GR 8	4	11-0664
10	FITTING, #12FLANGE X 1M.JIC-90DEG	2	21-1302

DECK ASSEMBLIES



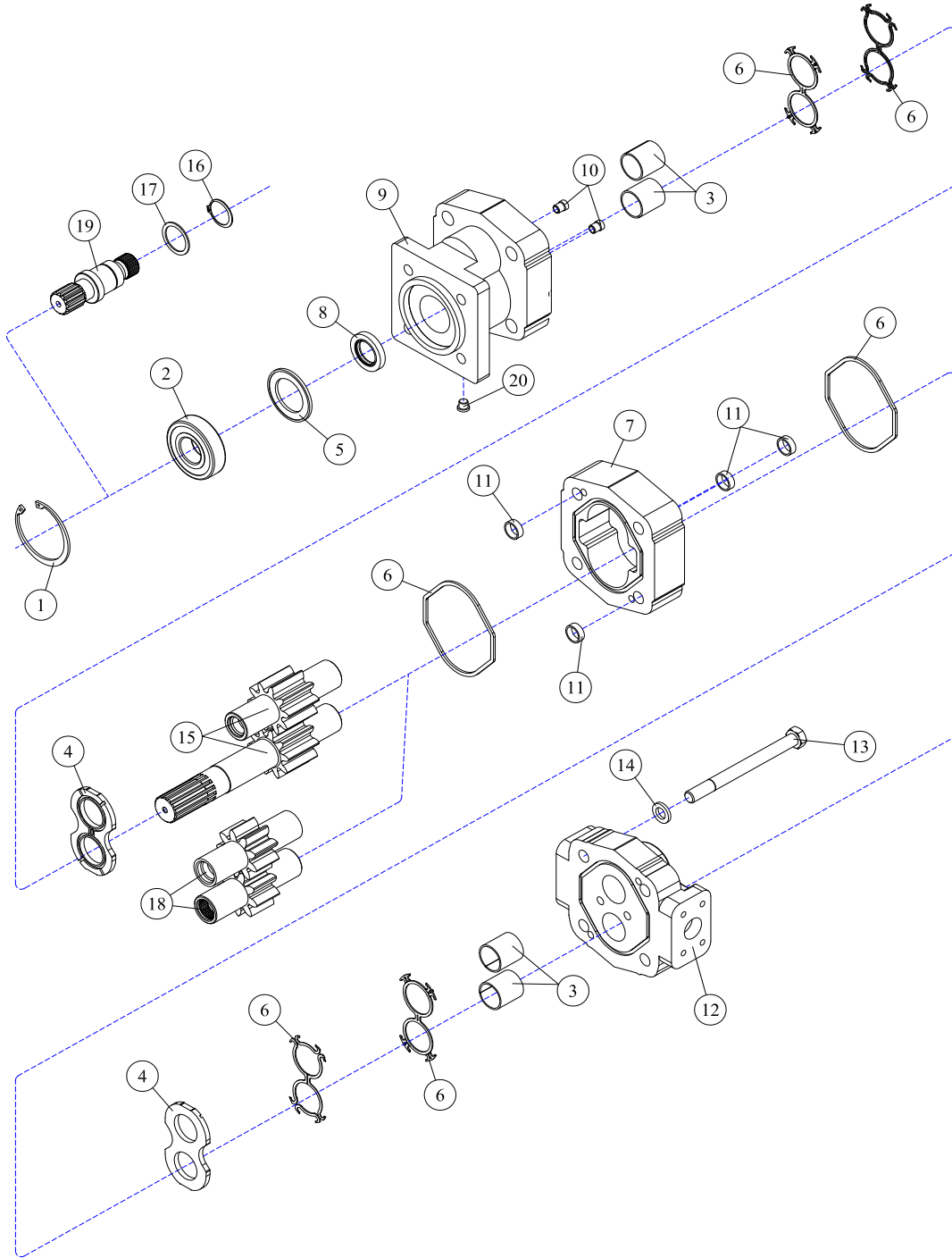
30-0514 - MOTOR ASSEMBLY



REF#	PARTS DESCRIPTION	REQ	PART #
1	SNAP RING	1	30-1009
2	OUTBOARD BEARING	1	30-1010
3	BUSHING	4	30-1011
4	THRUST PLATE	2	30-1012
5	SEAL RETAINER	1	30-1017
6	RETAINING RING	1	30-1019
7	WASHER	1	30-1020
8	M365 SEAL KIT	Avail	30-1021
9	150 PSI (included in M365 seal kit)	1	30-1210
10	SHAFT END COVER	1	30-1086

REF#	PARTS DESCRIPTION	REQ	PART #
11	CHECK ASSEMBLY	2	30-1087
12	ALIGNMENT BUSHING	4	30-1090
13	PORT END COVER	1	30-1091
14	WASHER	4	30-1093
15	PLUG	1	30-1096
16	GEAR HOUSING	1	30-1140
17	1" GEAR SET	1	30-1141
18	CONTINENTAL SHAFT, SPLINED	1	30-1144
19	STUD	4	Call

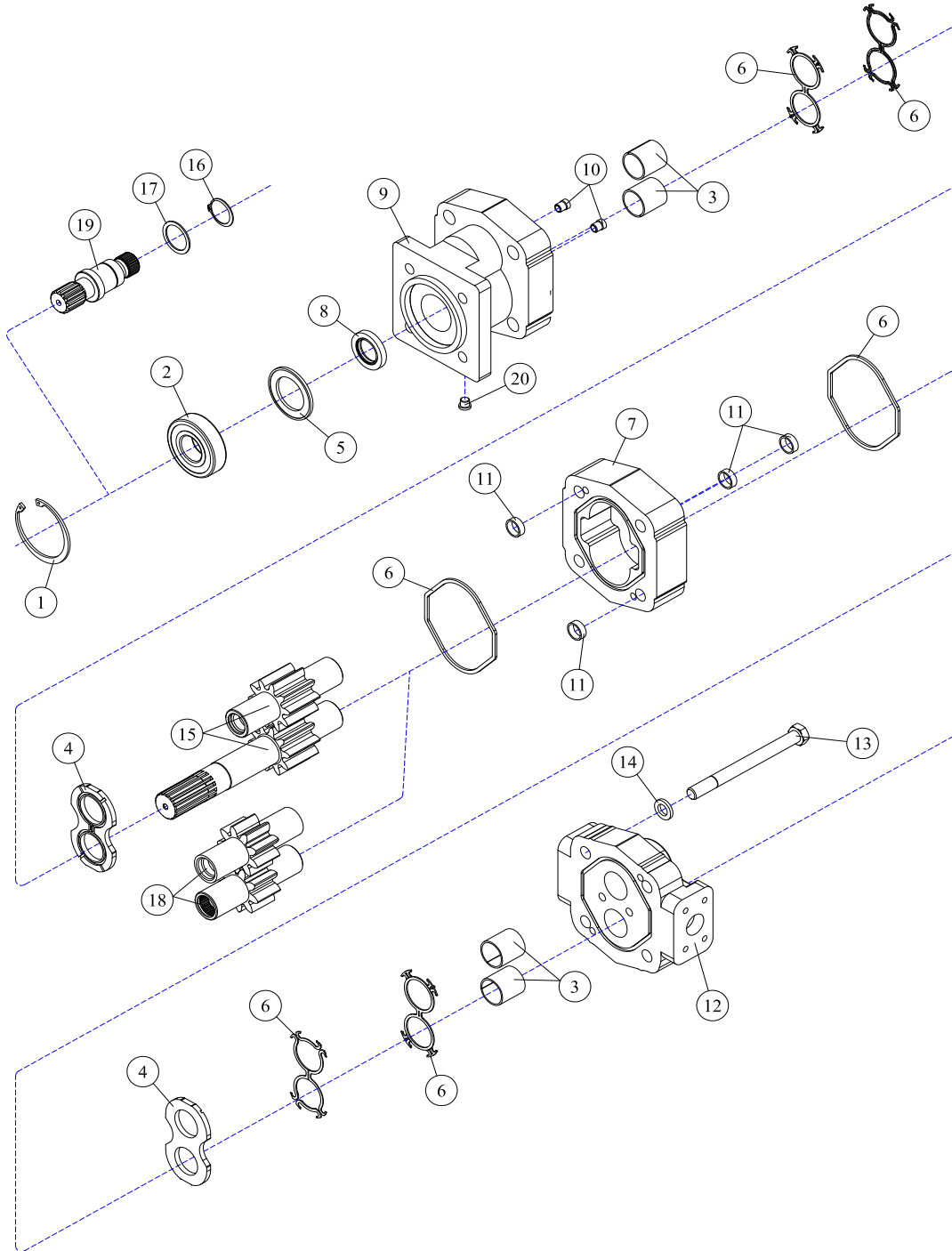
30-0515 - MOTOR ASSEMBLY



REF#	PARTS DESCRIPTION	REQ	PART #
1	SNAP RING	1	30-1009
2	OUTBOARD BEARING	1	30-1010
3	BUSHING	4	30-1011
4	THRUST PLATE	2	30-1012
5	SEAL RETAINER	1	30-1017
6	M365 SEAL KIT	Avail	30-1021
7	GEAR HOUSING	1	30-1023
8	SHAFT SEAL		
	150 PSI (included in M365 seal kit)	1	30-1210
	500 PSI	1	30-1156
9	SHAFT END COVER	1	30-1086
10	CHECK ASSEMBLY	2	30-1087
11	ALIGNMENT BUSHING	4	30-1090

REF#	PARTS DESCRIPTION	REQ	PART #
12	PORT END COVER	1	30-1091
13	STUD	4	30-1092
14	WASHER	4	30-1093
	GEAR SET OPTION A:		
15	1-1/2" GEAR SET	1	30-1159
	GEAR SET OPTION B:		
16	RETAINING RING	1	30-1019
17	WASHER	1	30-1020
18	1-1/2" GEAR SET	1	30-1022
19	CONTINENTAL SHAFT, SPLINED	1	30-1144
20	PLUG	1	30-1096
*	SEAL APPLICATOR TOOL (not shown)	Avail	30-1048

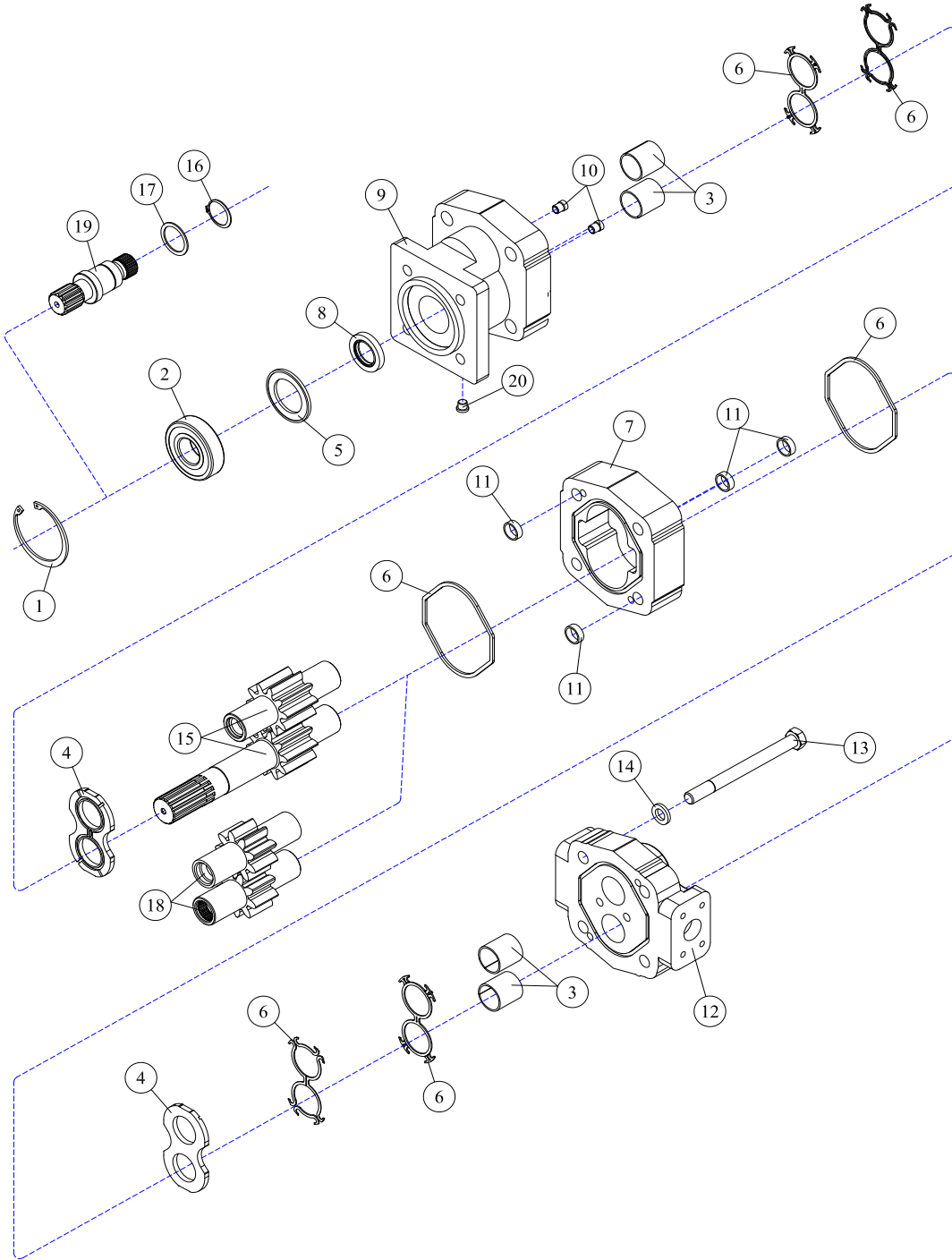
30-0518 - MOTOR ASSEMBLY



REF#	PARTS DESCRIPTION	REQ	PART #
1	SNAP RING	1	30-1009
2	OUTBOARD BEARING	1	30-1010
3	BUSHING	4	30-1011
4	THRUST PLATE	2	30-1012
5	SEAL RETAINER	1	30-1017
6	M365 SEAL KIT	Avail	30-1021
7	2-1/2" M365 GEAR HOUSING	1	30-1137
8	SHAFT SEAL		
	150 PSI (included in M365 seal kit)	1	30-1210
	500 PSI	1	30-1156
9	SHAFT END COVER	1	30-1086
10	CHECK ASSEMBLY	2	30-1087
11	ALIGNMENT BUSHING	4	30-1090

REF#	PARTS DESCRIPTION	REQ	PART #
12	PORT END COVER	1	30-1091
13	STUD	4	30-1334
14	WASHER	4	30-1093
	GEAR SET OPTION A:		
15	2-1/2" GEAR SET	1	30-1170
	GEAR SET OPTION B:		
16	RETAINING RING	1	30-1019
17	WASHER	1	30-1020
18	2-1/2" GEAR SET	1	30-1136
19	CONTINENTAL SHAFT, SPLINED	1	30-1144
20	PLUG	1	30-1096
*	SEAL APPLICATOR TOOL (not shown)	Avail	30-1048

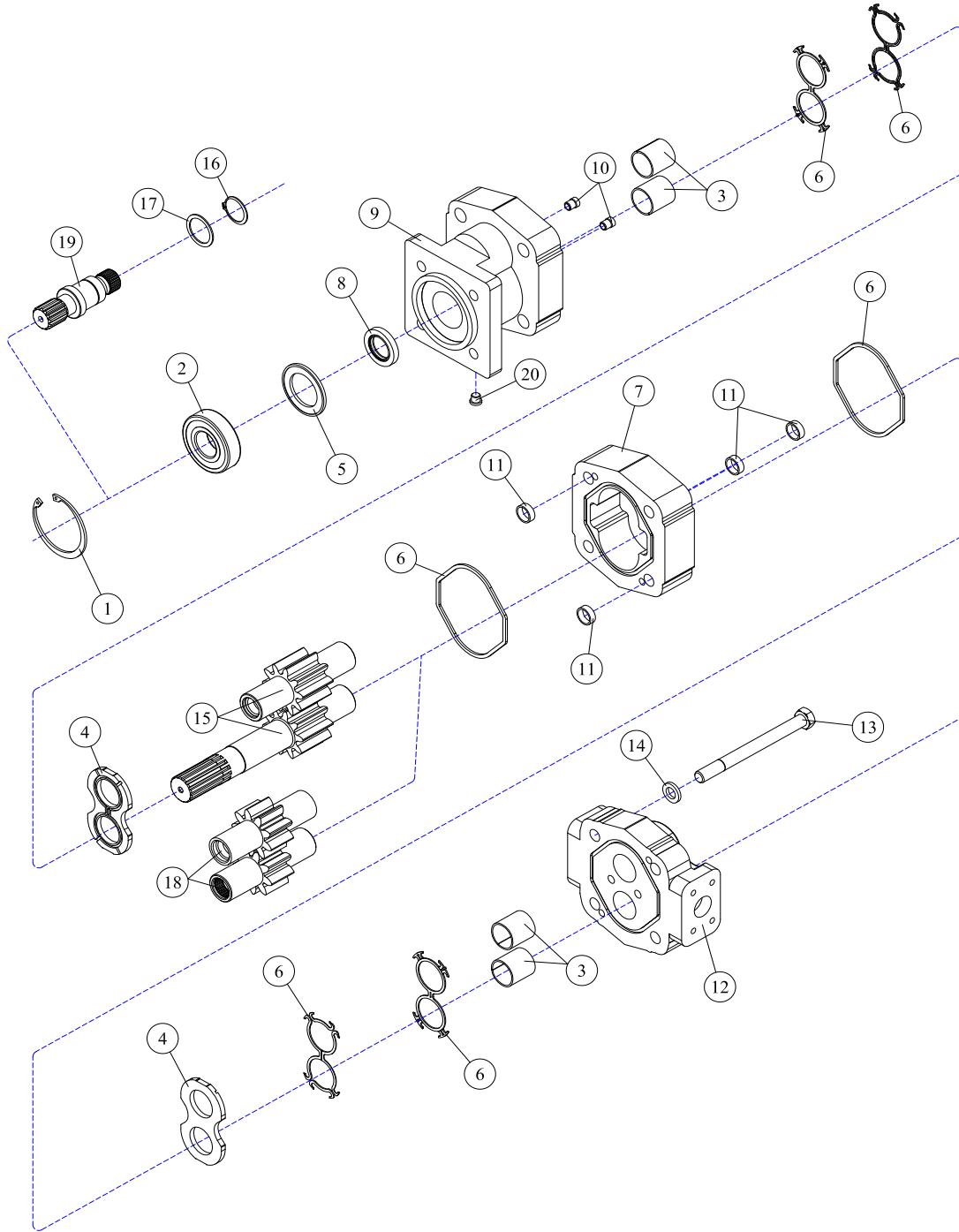
30-0520 - MOTOR ASSEMBLY



REF#	PARTS DESCRIPTION	REQ	PART #
1	SNAP RING	1	30-1009
2	OUTBOARD BEARING	1	30-1010
3	BUSHING	4	30-1011
4	THRUST PLATE	2	30-1012
5	SEAL RETAINER	1	30-1017
6	M365 SEAL KIT	Avail	30-1021
7	GEAR HOUSING	1	30-1015
8	SHAFT SEAL		
	150 PSI (included in M365 seal kit)	1	30-1210
	500 PSI	1	30-1156
9	SHAFT END COVER	1	30-1086
10	CHECK ASSEMBLY	2	30-1087
11	ALIGNMENT BUSHING	4	30-1090

REF#	PARTS DESCRIPTION	REQ	PART #
12	PORT END COVER	1	30-1091
13	STUD	4	30-1092
14	WASHER	4	30-1093
	GEAR SET OPTION A:		
15	1-3/4" GEAR SET	1	30-1166
	GEAR SET OPTION B:		
16	RETAINING RING	1	30-1019
17	WASHER	1	30-1020
18	1-3/4" GEAR SET	1	30-1013
19	CONTINENTAL SHAFT, SPLINED	1	30-1144
20	PLUG	1	30-1096
*	SEAL APPLICATOR TOOL (not shown)	Avail	30-1048

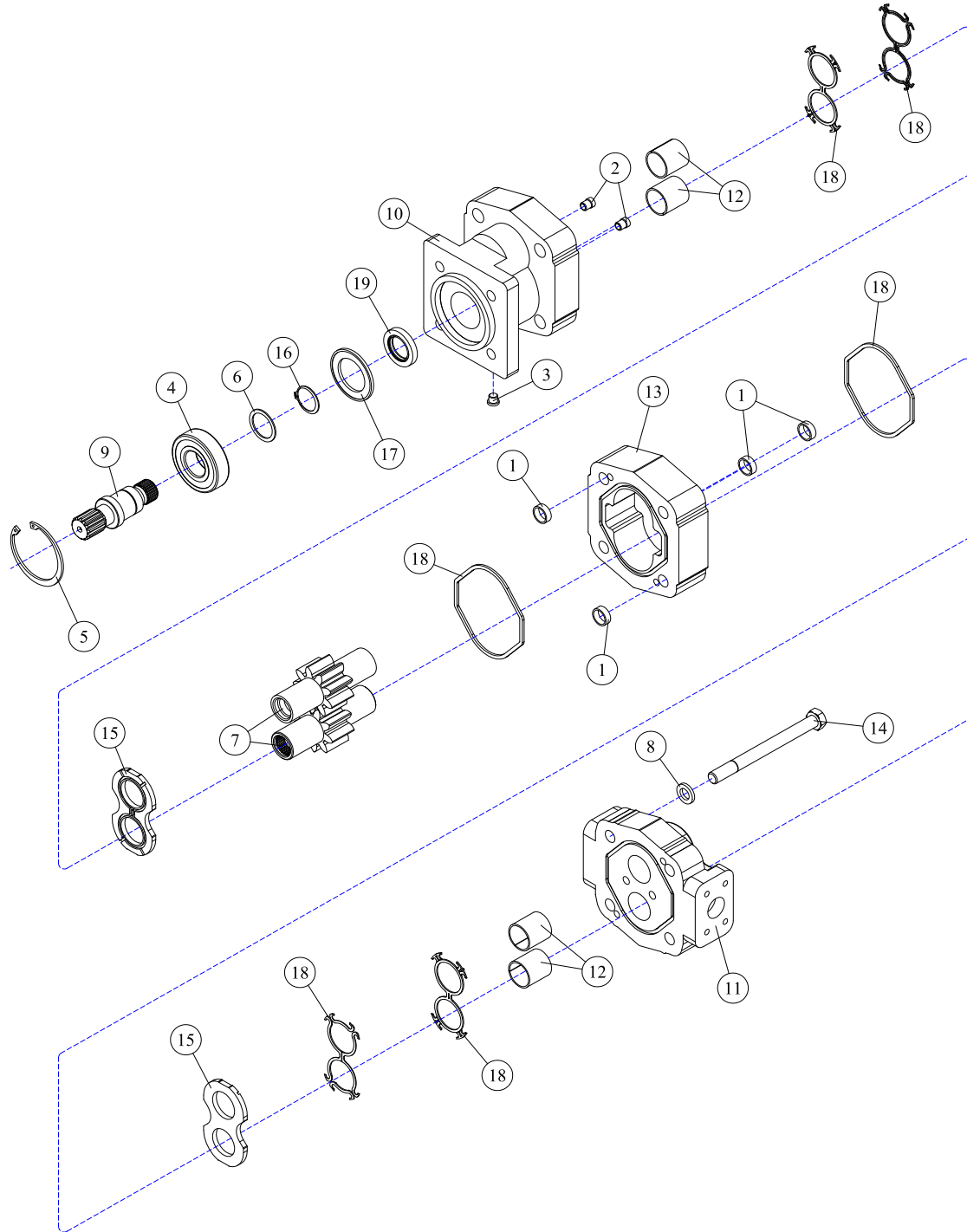
30-0524 - MOTOR ASSEMBLY



REF#	PARTS DESCRIPTION	REQ	PART #
1	SNAP RING	1	30-1009
2	OUTBOARD BEARING	1	30-1010
3	BUSHING	4	30-1011
4	THRUST PLATE	2	30-1012
5	SEAL RETAINER	1	30-1017
6	M365 SEAL KIT	Avail	30-1021
7	2-1/4" M365 GEAR HOUSING	1	30-1026
8	SHAFT SEAL		
	150 PSI (included in M365 seal kit)	1	30-1210
	500 PSI	1	30-1156
9	SHAFT END COVER	1	30-1086
10	CHECK ASSEMBLY	2	30-1087
11	ALIGNMENT BUSHING	4	30-1090

REF#	PARTS DESCRIPTION	REQ	PART #
12	PORT END COVER	1	30-1091
13	STUD	4	Call
14	WASHER	4	30-1093
	GEAR SET OPTION A:		
15	2-1/4" GEAR SET	1	30-1165
	GEAR SET OPTION B:		
16	RETAINING RING	1	30-1019
17	WASHER	1	30-1020
18	2-1/4" GEAR SET	1	30-1025
19	CONTINENTAL SHAFT, SPLINED	1	30-1144
20	PLUG	1	30-1096
*	SEAL APPLICATOR TOOL (not shown)	Avail	30-1048

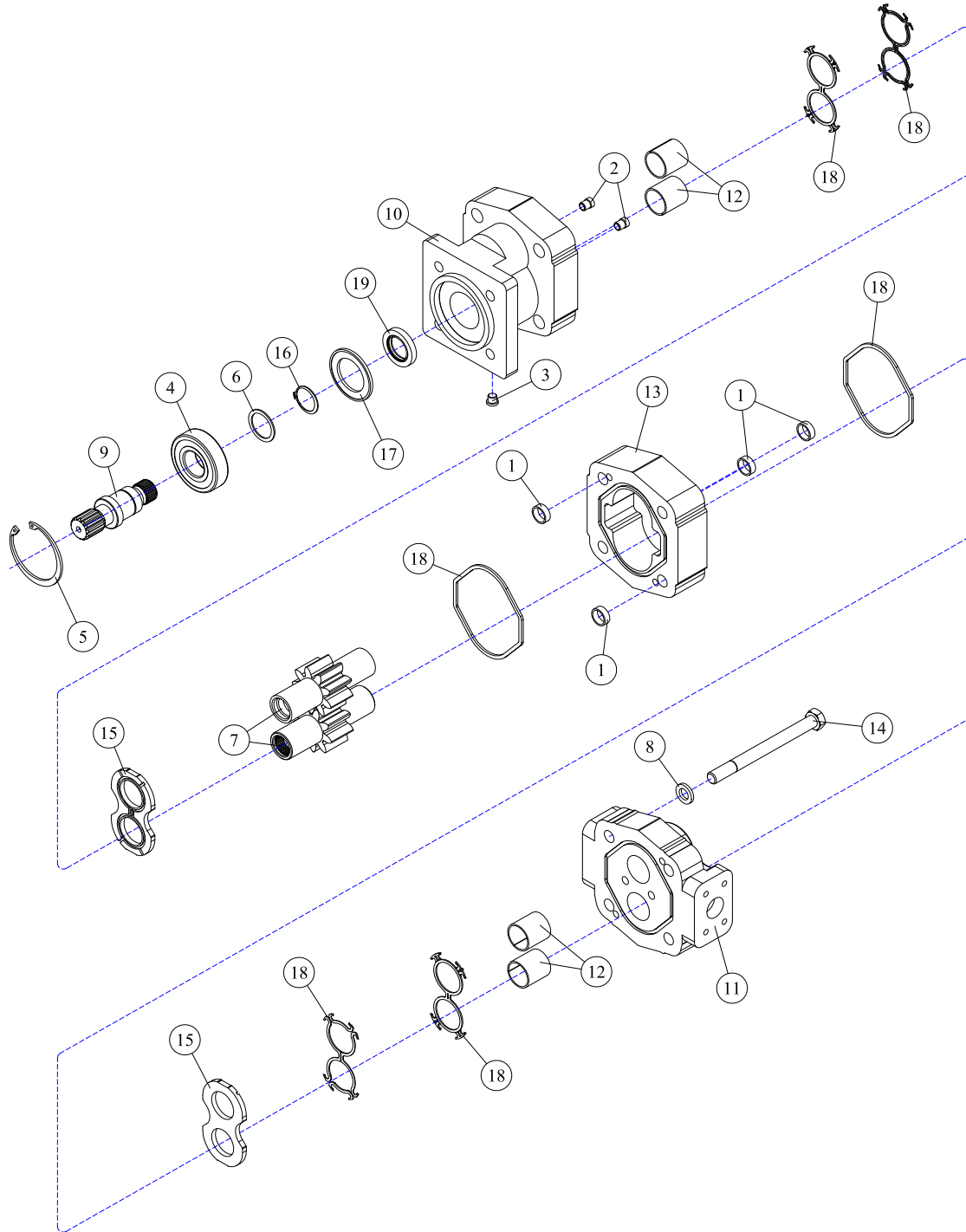
30-0525 - MOTOR ASSEMBLY



REF#	PARTS DESCRIPTION	REQ	PART #
1	DOWEL PIN	4	30-1086
2	CHECK ASSEMBLY	2	30-1087
3	PLUG	1	30-1096
4	OUTBOARD BEARING	1	30-1109
5	SNAP RING	1	30-1110
6	BEARING SPACER	1	30-1112
7	GEAR SET, M330, 1-1/4"	1	30-1191
8	WASHER	4	30-1127
9	CONTINENTAL SHAFT	1	30-1130
10	SHAFT END COVER	1	30-1182

REF#	PARTS DESCRIPTION	REQ	PART #
11	PORT END COVER	1	30-1183
12	BUSHING (included in shaft & port covers)	4	Call
13	GEAR HOUSING, M330, 1-1/4"	1	30-1192
14	STUD	4	30-1185
15	THRUST PLATE	2	30-1186
16	RETAINING RING	1	30-1187
17	SEAL RETAINER	1	30-1188
18	M330 SEAL KIT	Avail	30-1189
19	SHAFT SEAL 150 PSI (included in M330 seal kit)	1	30-1190

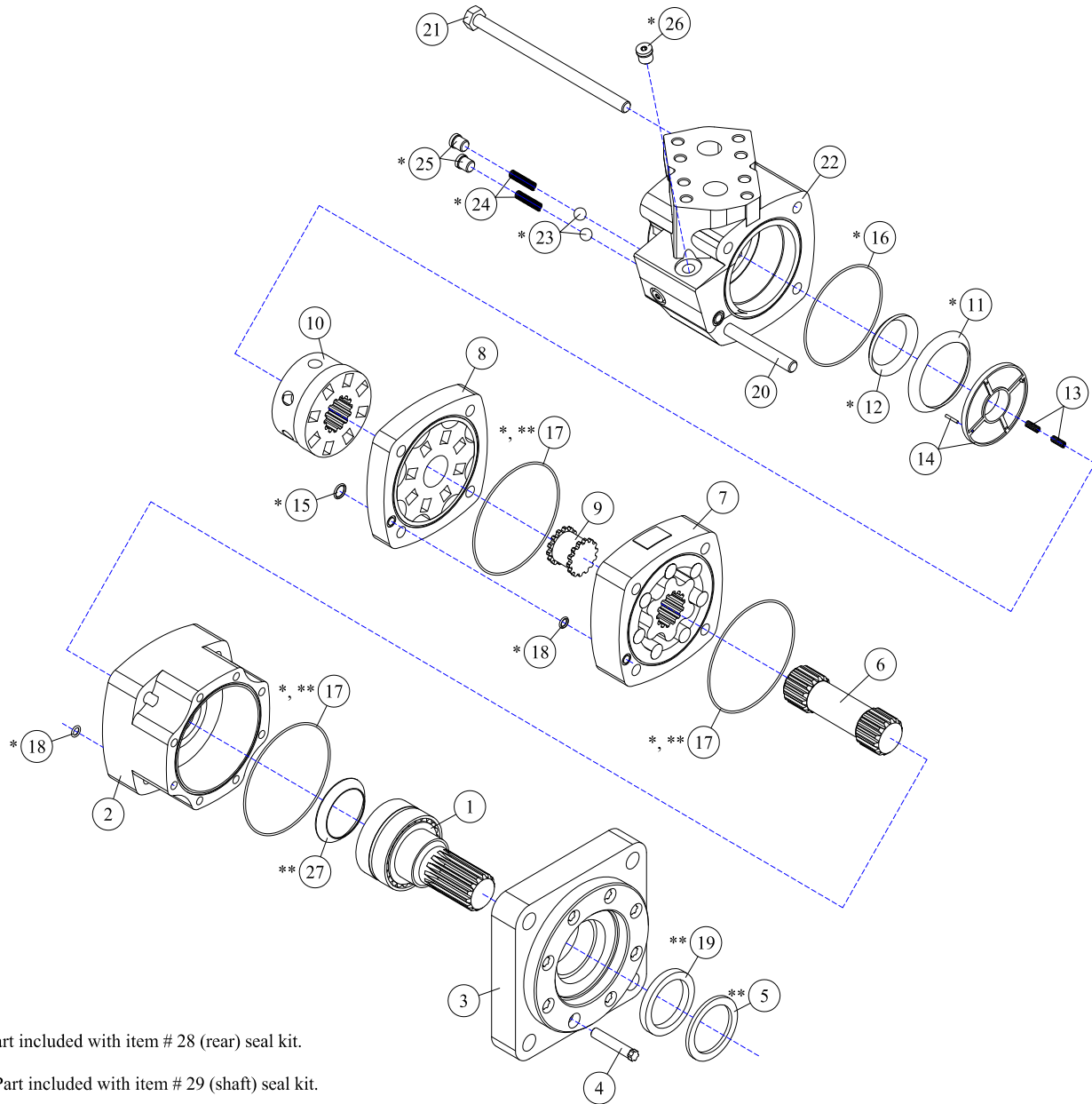
30-0526 - MOTOR ASSEMBLY



REF#	PARTS DESCRIPTION	REQ	PART #
1	DOWEL PIN	4	30-1086
2	CHECK ASSEMBLY	2	30-1087
3	PLUG	1	30-1096
4	OUTBOARD BEARING	1	30-1109
5	SNAP RING	1	30-1110
6	BEARING SPACER	1	30-1112
7	GEAR SET, M330, 1-1/2"	1	30-1119
8	WASHER	4	30-1127
9	CONTINENTAL SHAFT	1	30-1130
10	SHAFT END COVER	1	30-1182

REF#	PARTS DESCRIPTION	REQ	PART #
11	PORT END COVER	1	30-1183
12	BUSHING (included in shaft & port covers)	4	Call
13	GEAR HOUSING, M330, 1-1/2"	1	30-1184
14	STUD	4	30-1185
15	THRUST PLATE	2	30-1186
16	RETAINING RING	1	30-1187
17	SEAL RETAINER	1	30-1188
18	M330 SEAL KIT	Avail	30-1189
19	SHAFT SEAL 100 PSI (included in M330 seal kit)	1	30-1190
*	SEAL APPLICATOR TOOL (not shown)	Avail	30-1048

30-0527 - MOTOR ASSEMBLY



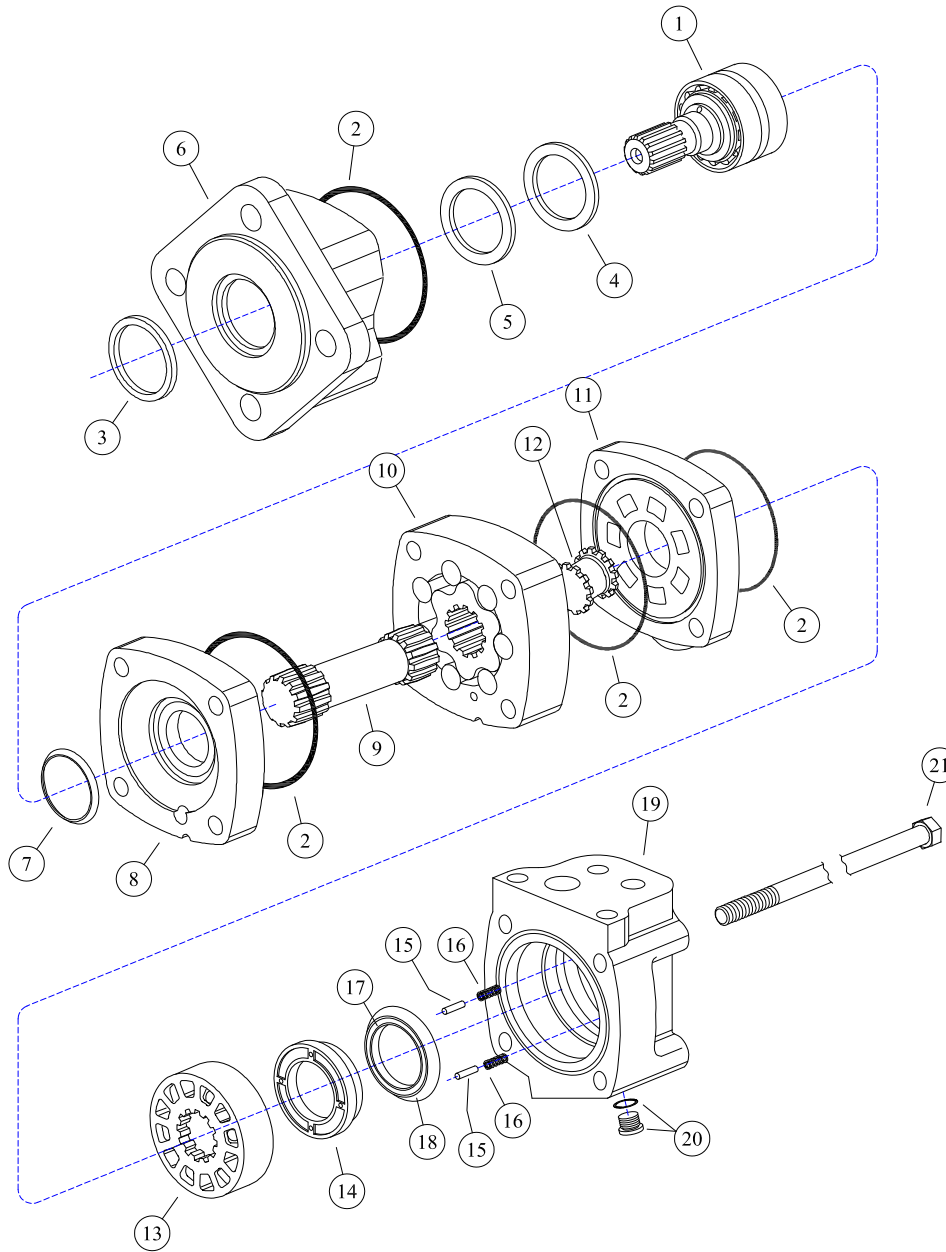
* Part included with item # 28 (rear) seal kit.

** Part included with item # 29 (shaft) seal kit.

REF#	PARTS DESCRIPTION	REQ	PART #
1	SHAFT & BEARING KIT (1-1/4" SPLINED 14T)	1	30-1282
2	HOUSING, BEARING	1	30-1285
3	FLANGE, MOUNTING	1	30-1286
4	SCREW, CAP (6-PT, 5/16 X 1-5/8 NF)	8	30-1287
5	**RING, BACK-UP	1	30-1288
6	DRIVE, MAIN (CONNECTING DRIVE)	1	30-1289
7	GEROLER	1	30-1290
8	PLATE, VALVE	1	30-1291
9	DRIVE, VALVE	1	30-1292
10	VALVE	1	30-1293
11	*SEAL, FACE, OUTER	1	30-1294
12	*SEAL, FACE, INNER	1	30-1295
13	SPRING, COMPRESSION	2	30-1296
14	BALANCE RING & PIN ASSEMBLY	1	30-1297
15	*O-RING SEAL, SMALL	1	30-1298

REF#	PARTS DESCRIPTION	REQ	PART #
16	*O-RING SEAL, MEDIUM	1	30-1299
17	*, **O-RING SEAL, LARGE	3	30-1300
18	*O-RING SEAL, TINY	2	30-1301
19	**SEAL, SHAFT	1	30-1302
20	SCREW, CAP, BOTTOM (SHORT)	2	30-1303
21	SCREW, CAP, TOP (LONG)	2	30-1304
22	HOUSING, VALVE	1	30-1305
23	*BALL, STEEL (FOR CHECK PLUG)	2	30-1306
24	*SPRING, COMPRESSION (FOR CHECK PLUG)	2	30-1307
25	*CHECK PLUG ASSEMBLY W/ O-RING	2	30-1308
26	*CASE DRAIN PLUG ASSEMBLY W/ O-RING	1	30-1309
27	**SEAL, SHAFT FACE	1	30-1310
28	SEAL KIT (REAR)	1	33-0070
29	SEAL KIT (SHAFT)	1	33-0071

30-0528 - MOTOR ASSEMBLY

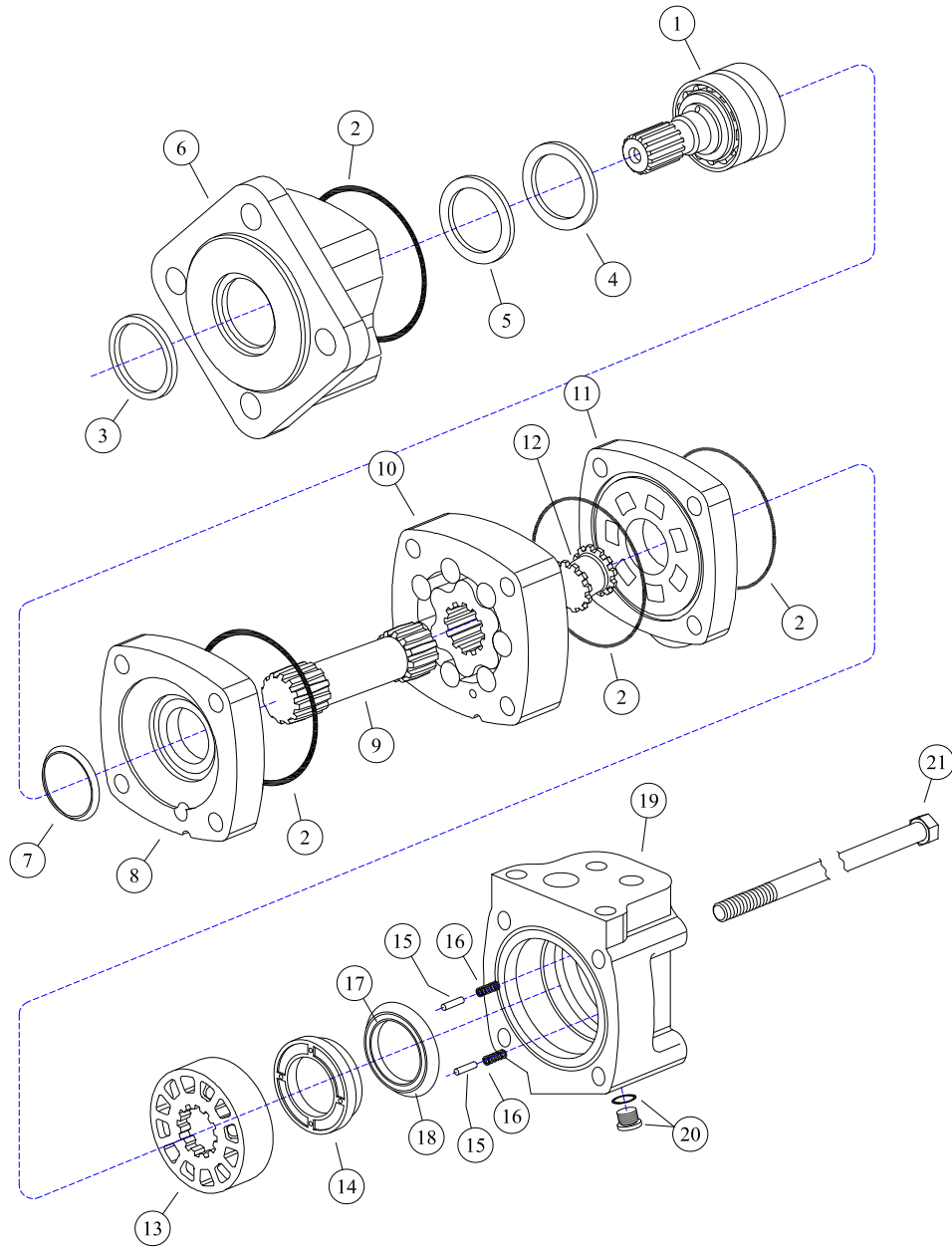


* Part included with item # 22 seal kit

REF#	PARTS DESCRIPTION	REQ	PART #
1	SHAFT & BEARING KIT (1-1/4" SPLINED 14T)	1	30-1311
2	SEAL	4	30-1312
3	SEAL, EXCLUSION	1	30-1313
4	SEAL, SHAFT	1	30-1314
5	RING, BACK-UP	1	30-1315
6	HOUSING, BEARING, DIAGONAL (FOUR BOLT)	1	30-1316
7	SEAL, SHAFT FACE	1	30-1317
8	PLATE, WEAR	1	30-1318
9	DRIVE, MAIN	1	30-1319
10	GEROLER	1	30-1320
11	PLATE, VALVE	1	30-1321
12	DRIVE, VALVE	1	30-1322

REF#	PARTS DESCRIPTION	REQ	PART #
13	VALVE	1	30-1323
14	BALANCE RING	1	30-1324
15	PIN, BALANCE RING	2	30-1325
16	SPRING, COMPRESSION	2	30-1326
17	SEAL, FACE, INNER	1	30-1327
18	SEAL, FACE, OUTER	1	30-1328
19	HOUSING, VALVE	1	30-1329
20	PLUG ASSEMBLY W/ O-RING	1	30-1309
	O-RING	1	30-1330
21	SCREW, CAP	4	30-1331
22	SEAL KIT	1	33-0064

30-0529 - MOTOR ASSEMBLY

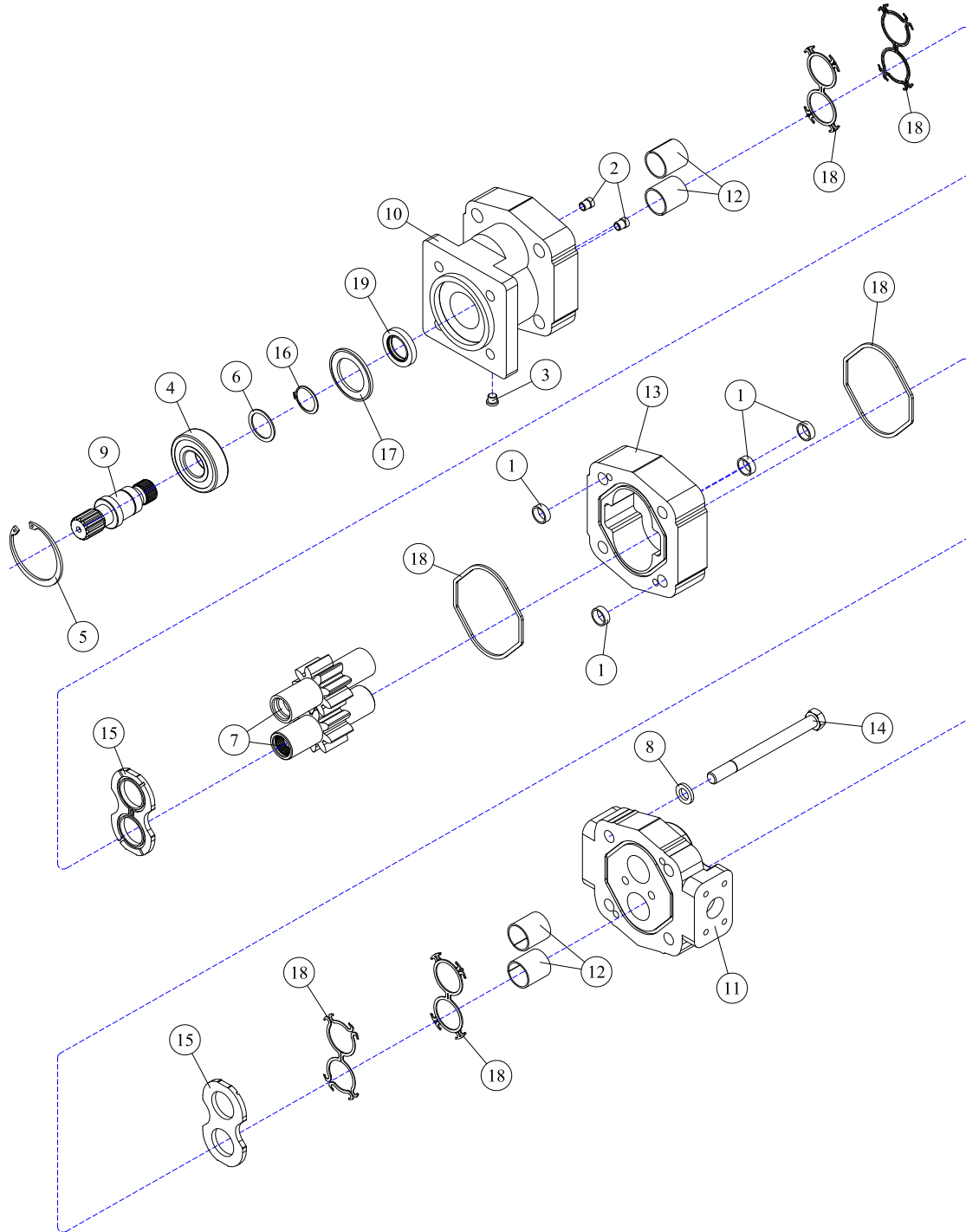


* Part included with item # 22 seal kit

REF#	PARTS DESCRIPTION	REQ	PART #
1	SHAFT & BEARING KIT (1-1/4" SPLINED 14T)	1	30-1311
2	SEAL	4	30-1312
3	SEAL, EXCLUSION	1	30-1313
4	SEAL, SHAFT	1	30-1314
5	RING, BACK-UP	1	30-1315
6	HOUSING, BEARING, DIAGONAL (FOUR BOLT)	1	30-1316
7	SEAL, SHAFT FACE	1	30-1317
8	PLATE, WEAR	1	30-1318
9	DRIVE, MAIN	1	30-1319
10	GEROLER	1	30-1320
11	PLATE, VALVE	1	30-1321
12	DRIVE, VALVE	1	30-1322

REF#	PARTS DESCRIPTION	REQ	PART #
13	VALVE	1	30-1323
14	BALANCE RING	1	30-1324
15	PIN, BALANCE RING	2	30-1325
16	SPRING, COMPRESSION	2	30-1326
17	SEAL, FACE, INNER	1	30-1327
18	SEAL, FACE, OUTER	1	30-1328
19	HOUSING, VALVE	1	30-1329
20	PLUG ASSEMBLY W/ O-RING	1	30-1309
	O-RING	1	30-1330
21	SCREW, CAP	4	30-1331
22	SEAL KIT	1	33-0064

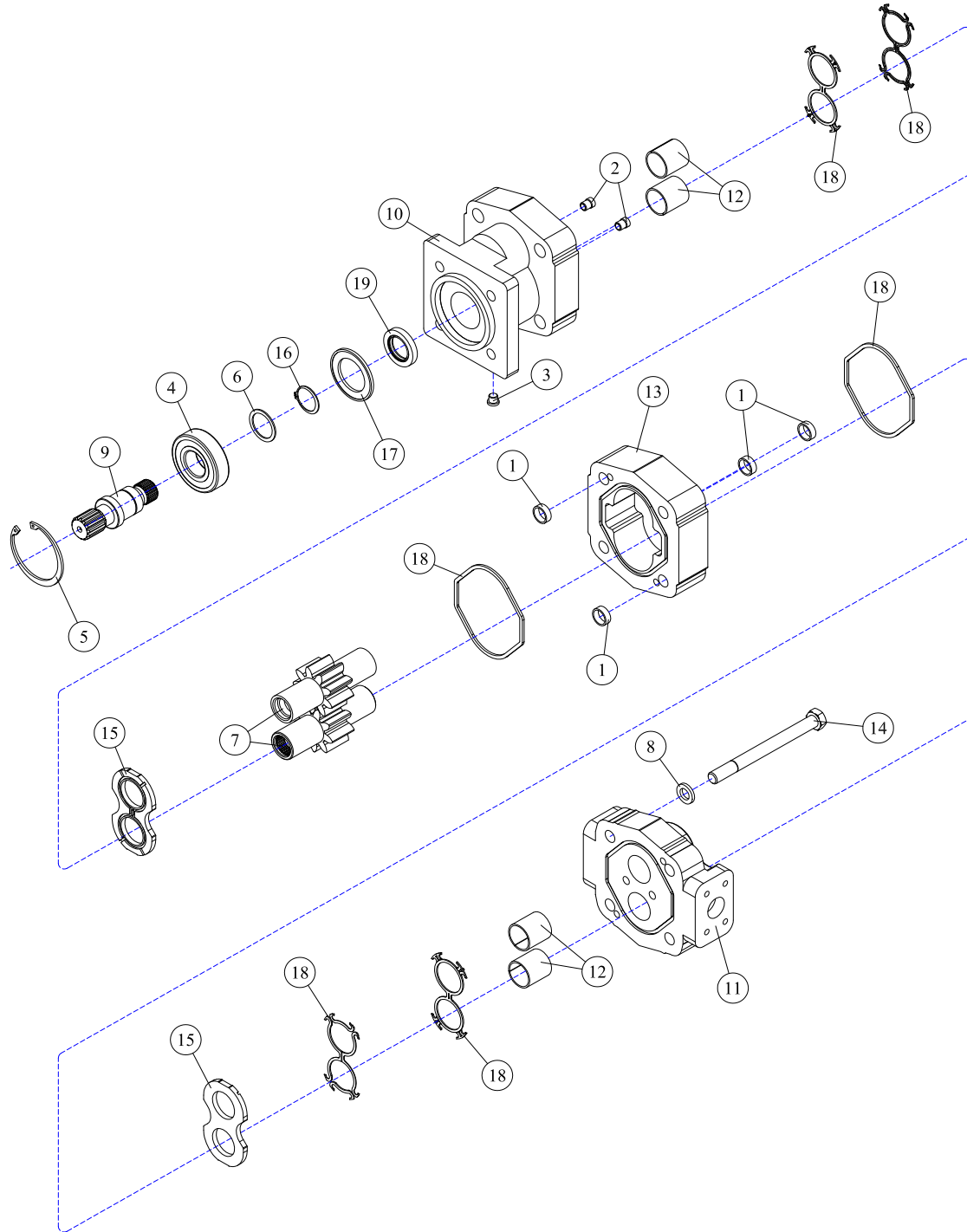
30-0530 - MOTOR ASSEMBLY



REF#	PARTS DESCRIPTION	REQ	PART #
1	DOWEL PIN	4	30-1086
2	CHECK ASSEMBLY	2	30-1087
3	PLUG	1	30-1096
4	OUTBOARD BEARING	1	30-1109
5	SNAP RING	1	30-1110
6	BEARING SPACER	1	30-1112
7	GEAR SET, M330, 1"	1	30-1196
8	WASHER	4	30-1127
9	CONTINENTAL SHAFT	1	30-1130
10	SHAFT END COVER	1	30-1182

REF#	PARTS DESCRIPTION	REQ	PART #
11	PORT END COVER	1	30-1183
12	BUSHING (included in shaft & port covers)	4	Call
13	GEAR HOUSING, M330, 1"	1	30-1197
14	STUD	4	30-1198
15	THRUST PLATE	2	30-1186
16	RETAINING RING	1	30-1187
17	SEAL RETAINER	1	30-1188
18	M330 SEAL KIT	Avail	30-1189
19	SHAFT SEAL 150 PSI (included in M330 seal kit)	1	30-1190
*	SEAL APPLICATOR TOOL (not shown)	Avail	30-1048

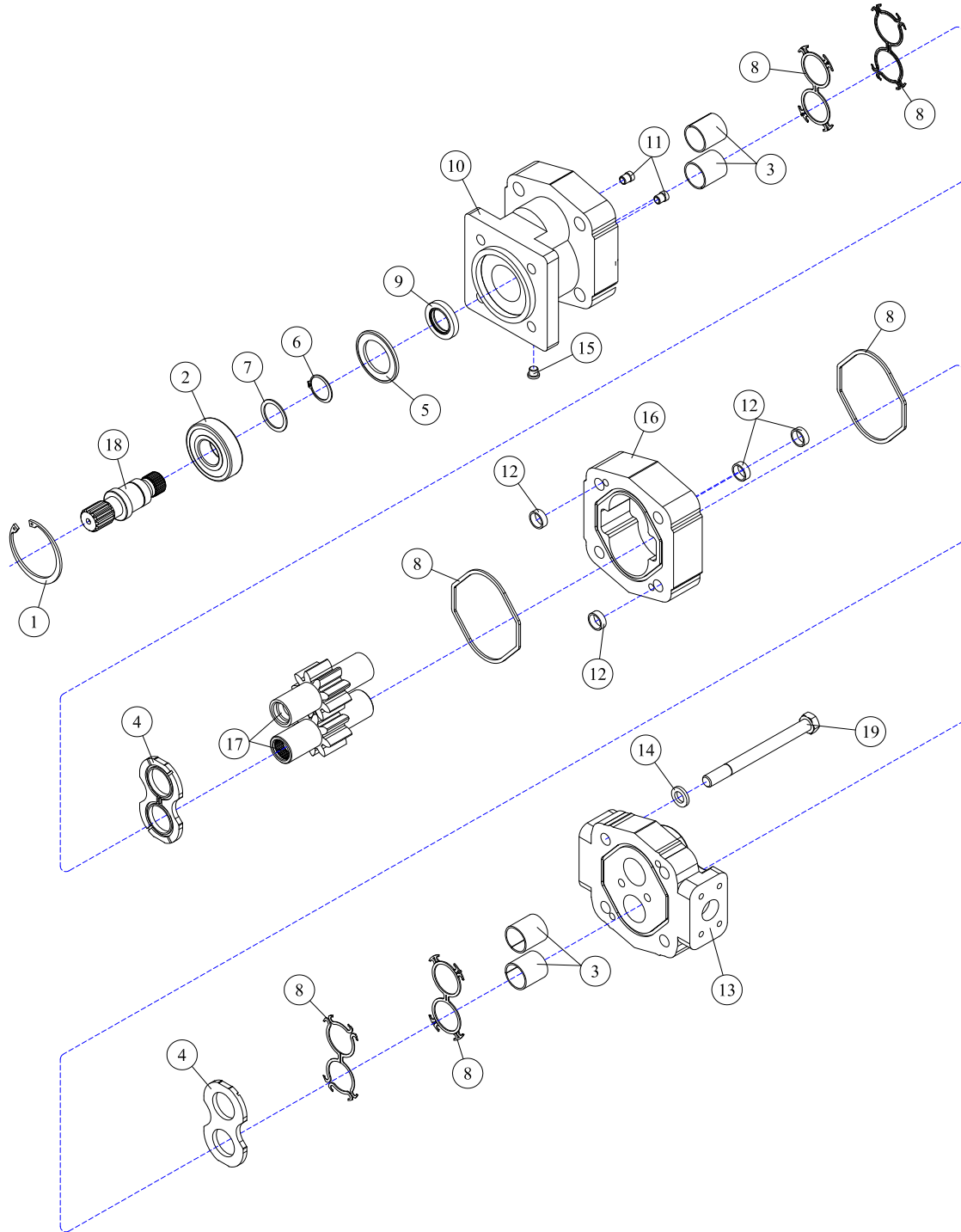
30-0531 - MOTOR ASSEMBLY



REF#	PARTS DESCRIPTION	REQ	PART #
1	DOWEL PIN	4	30-1086
2	CHECK ASSEMBLY	2	30-1087
3	PLUG	1	30-1096
4	OUTBOARD BEARING	1	30-1109
5	SNAP RING	1	30-1110
6	BEARING SPACER	1	30-1112
7	GEAR SET, M330, 1-3/4"	1	30-1202
8	WASHER	4	30-1127
9	CONTINENTAL SHAFT	1	30-1130
10	SHAFT END COVER	1	30-1182

REF#	PARTS DESCRIPTION	REQ	PART #
11	PORT END COVER	1	30-1183
12	BUSHING (included in shaft & port covers)	4	Call
13	GEAR HOUSING, M330, 1-3/4"	1	30-1203
14	STUD	4	30-1204
15	THRUST PLATE	2	30-1186
16	RETAINING RING	1	30-1187
17	SEAL RETAINER	1	30-1188
18	M330 SEAL KIT	Avail	30-1189
19	SHAFT SEAL 100 PSI (included in M330 seal kit)	1	30-1190
*	SEAL APPLICATOR TOOL (not shown)	Avail	30-1048

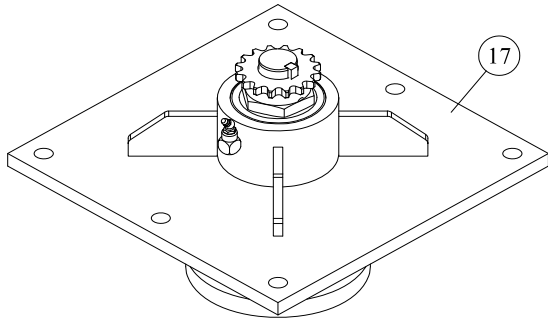
30-0532 - MOTOR ASSEMBLY



REF#	PARTS DESCRIPTION	REQ	PART #
1	SNAP RING	1	30-1009
2	OUTBOARD BEARING	1	30-1010
3	BUSHING	4	30-1011
4	THRUST PLATE	2	30-1012
5	SEAL RETAINER	1	30-1017
6	RETAINING RING	1	30-1019
7	WASHER	1	30-1020
8	M365 SEAL KIT	Avail	30-1021
9	150 PSI (included in M365 seal kit)	1	30-1210
10	SHAFT END COVER	1	30-1086

REF#	PARTS DESCRIPTION	REQ	PART #
11	CHECK ASSEMBLY	2	30-1087
12	ALIGNMENT BUSHING	4	30-1090
13	PORT END COVER	1	30-1091
14	WASHER	4	30-1093
15	PLUG	1	30-1096
16	GEAR HOUSING	1	30-1195
17	1-1/4" GEAR SET	1	30-1194
18	CONTINENTAL SHAFT, SPLINED	1	30-1144
19	STUD	4	Call

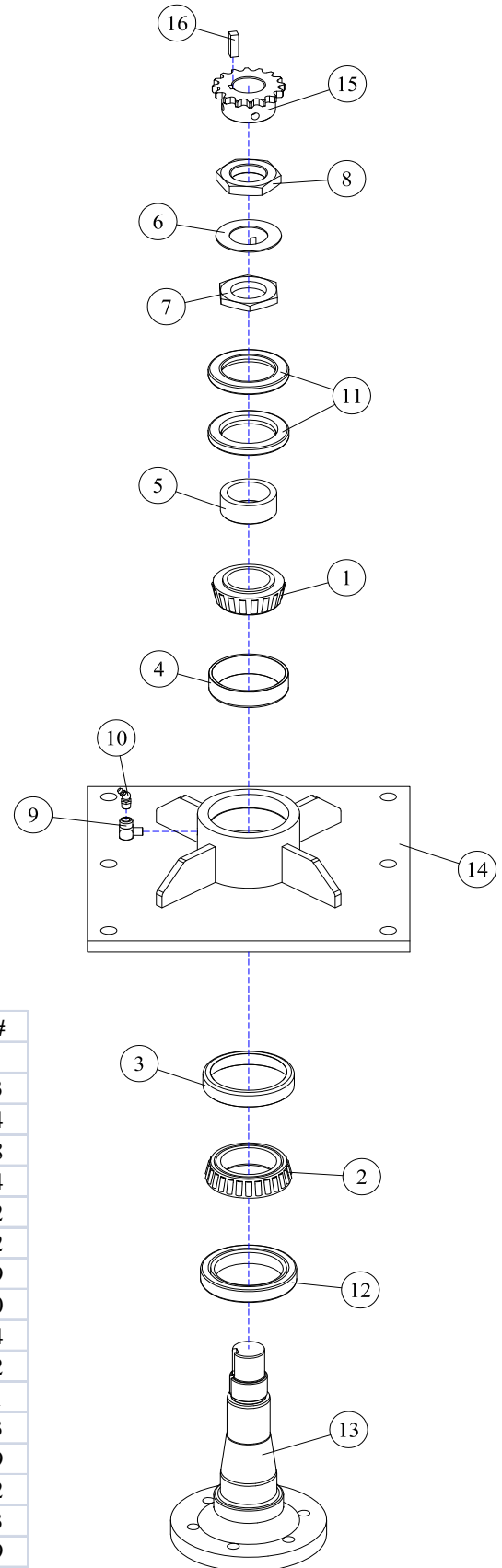
35-0010 - INDIRECT DRIVE SPINDLE



* Complete spindle assemblies also available.
Diamond Part #35-0010

**Do not use #2 heavy-duty grease on spindle assembly. Use Diamond spindle grease parts #23-0001

***Complete spindle repair kits available.
These kits include 10-0003, 10-0004, 10-0008, 10-0014, 10-1002, 11-0002, 11-1009, 11-1010, 33-0001, 33-0003 & 37-0009. These can be purchased using part #44-0001



REF#	PARTS DESCRIPTION	REQ	PART #
1	BEARING CONE	1	10-0003
2	BEARING CONE	1	10-0004
3	BEARING CUP	1	10-0008
4	BEARING CUP	1	10-0014
5	BEARING ADJUSTMENT SLEEVE	1	10-1002
6	JAM WASHER	1	11-0002
7	ADJUSTMENT BEARING NUT	1	11-1009
8	ADJUSTMENT BEARING NUT	1	11-1010
9	1/8" X 90DEG ELBOW	1	21-1104
10	1/8" X 45 GREASE ZERK	1	23-0002
11	UPPER SEAL SET	1	33-0001
12	LOWER SEAL	1	33-0003
13	SPINDLE	1	35-0009
14	SPINDLE HOUSING	1	35-0012
15	SPROCKET	1	37-0003
16	SPINDLE KEY	1	37-0009
17*	SPINDLE ASSY COMPLETE	Avail	35-0010
18**	DIAMOND SPINDLE GREASE	Avail	23-0001
19***	SPINDLE REPAIR KIT	Avail	44-0001

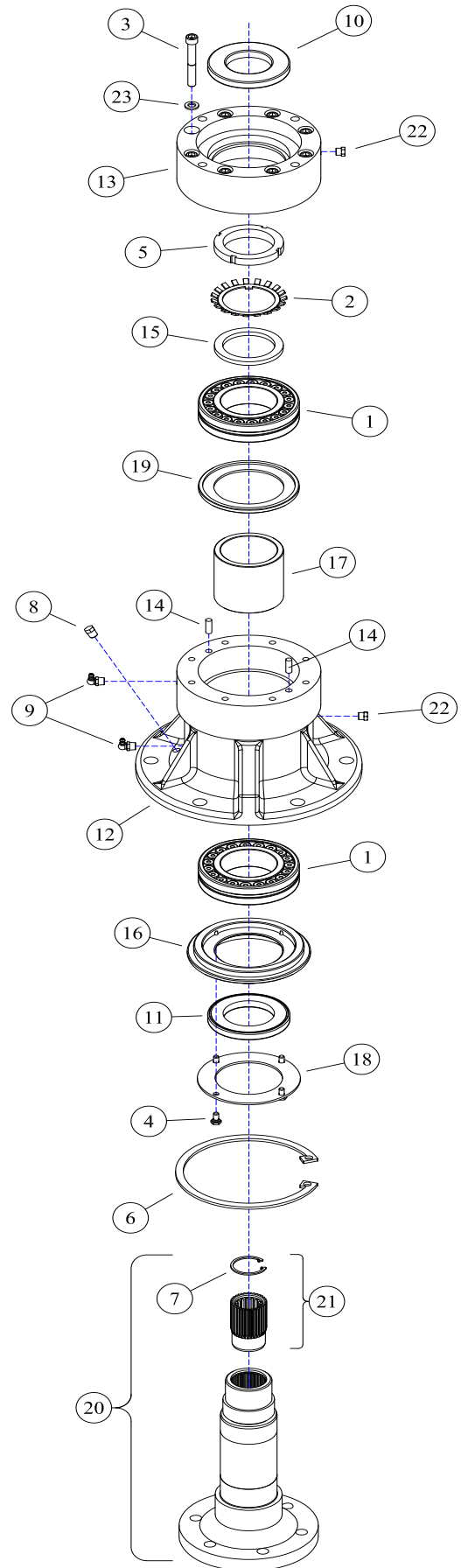
35-0088 - DIRECT DRIVE SPINDLE

Grease with #2 lithium based grease every 500hrs.
Use 10 pumps (.44oz) into each of the two grease zerks.

Warning: Do not overgrease
Overgreasing will cause damage or premature failure of the bearings, housing & seals.

REF#	PARTS DESCRIPTION	REQ	PART #
1	BEARING	2	10-0055
2	LOCKING WASHER	1	11-0048
3	3/8 X 2-3/4 NC SKT HEAD CAPSCREW	8	11-0703
4	1/4 X 1/2 NC CAPSCREW	4	11-0741
5	2-1/2 SPANNER NUT	1	11-1037
6	LARGE SNAP RING	1	11-2021
7	SMALL SNAP RING	1	11-2022
8	PIPE PLUG	1	21-1136
9	1/8 X 90 GREASE ZERK	2	23-0005
10	UPPER SEAL	1	33-0035
11	LOWER SEAL	1	33-0057
12	SPINDLE HOUSING	1	35-0021
13	SEAL/MOTOR MOUNT	1	35-0022
14	ALIGNMENT PIN	2	35-0032
15	SPACER	1	35-0050
16	BOTTOM SEAL PLATE	1	35-0063
17	SPACER	1	35-0064
18	BOTTOM PLATE	1	35-0065
19	GREASE CATCH	1	35-0066
20	SPINDLE SHAFT COMPLETE	1	35-0090
*21	SPLINED INSERT KIT	1	35-0091
22	BREATHER	2	80-1016
23	3/8 LOCK WASHER GR 5	8	11-0005

* The splined insert kit includes the insert removal tool 11-0913.



80-2542 - DIRECT DRIVE WETBLADE™ SPINDLE

The direct drive spindle requires substantially less lubrication than previous versions of mower spindles. Grease with #2 lithium based grease every 500hrs. Use 10 pumps (.44oz) into each of the two grease zerks.

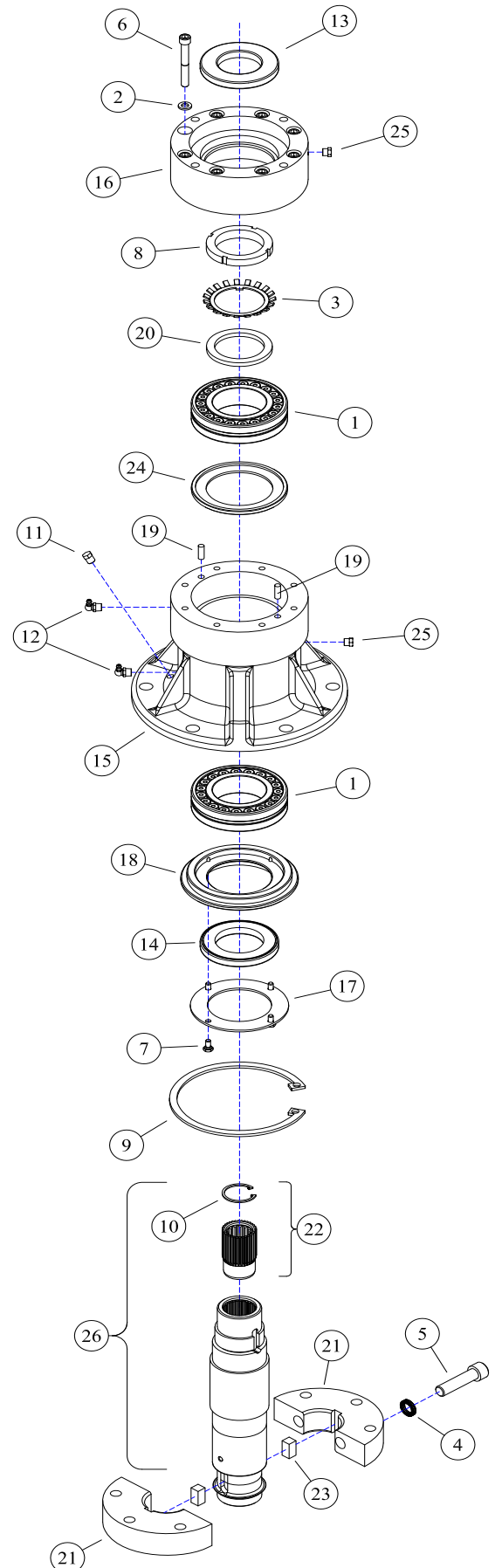
Warning: Do not overgrease

Overgreasing will cause damage or premature failure of the bearings, housing & seals.

REF#	PARTS DESCRIPTION	REQ	PART #
1	BEARING	2	10-0055
2	3/8 LOCK WASHER	8	11-0005
3	LOCKING WASHER	1	11-0048
4	5/8 CARBON STEEL NORD-LOCK	2	11-0053
5	5/8 X 2-1/2 NF SKT HEAD CAPSCREW	2	11-0697
6	3/8 X 2-3/4 NC SKT HEAD CAPSCREW	8	11-0703
7	1/4 X 1/2 NC CAPSCREW	4	11-0741
8	2-1/2 SPANNER NUT	1	11-1037
9	LARGE SNAP RING	1	11-2021
10	SMALL SNAP RING	1	11-2022
11	PIPE PLUG	1	21-1136
12	1/8 X 90 GREASE ZERK	2	23-0005
13	UPPER SEAL	1	33-0035
14	LOWER SEAL	1	33-0040
15	SPINDLE HOUSING	1	35-0021
16	SEAL/MOTOR MOUNT	1	35-0022
17	BOTTOM PLATE	1	35-0025
18	BOTTOM SEAL PLATE	1	35-0030
19	ALIGNMENT PIN	2	35-0032
20	SPACER	1	35-0050
*21	SHAFT CLAMP	1	35-0089
**22	SPLINED INSERT KIT	1	35-0091
23	KEY	2	35-0092
24	GREASE CATCH	1	80-1007
25	BREATHER	2	80-1016
26	SPINDLE SHAFT COMPLETE	1	80-1046

* Item # 21 shaft clamp includes both clamping halves.

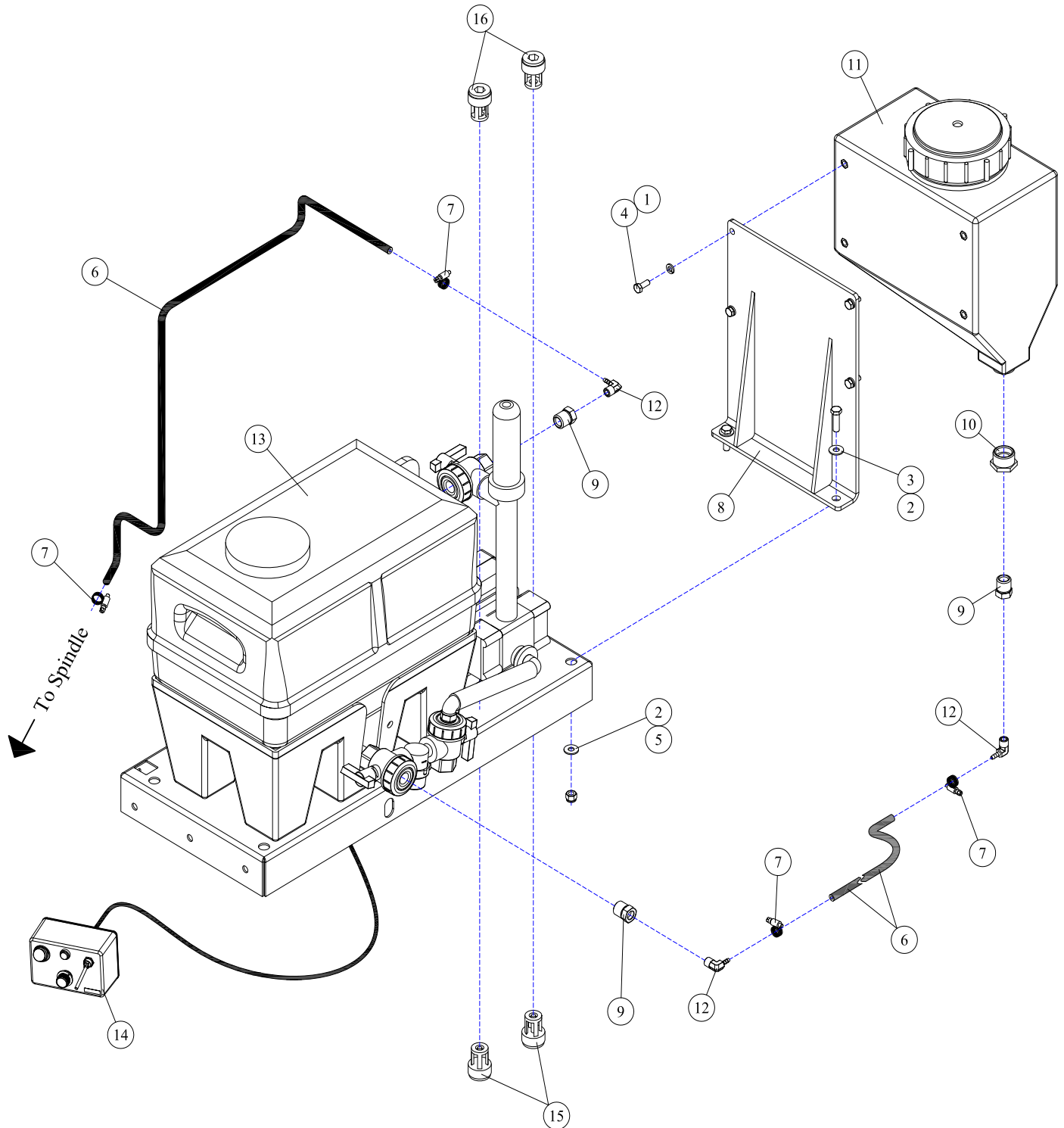
** The splined insert kit includes the insert removal tool 11-0913.



WETBLADE™
ASSEMBLIES



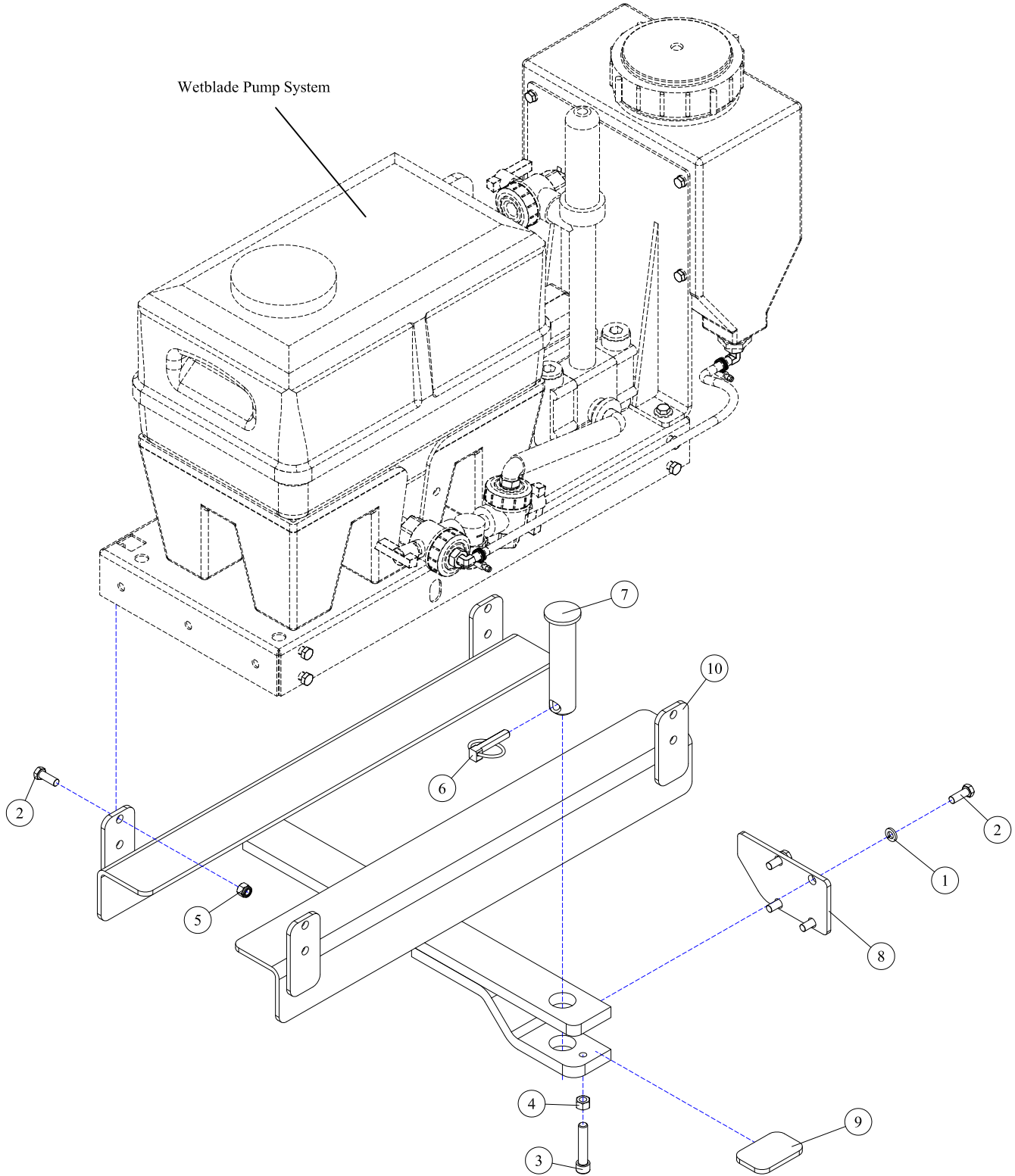
WETBLADE™ PUMP SYSTEM - LOW VOLUME



REF#	PARTS DESCRIPTION	REQ	PART #
1	5/16 LOCK WASHER GR5	4	11-0013
2	5/16 FLAT WASHER GR5	4	11-0015
3	3/8 X 1-1/4 NC HEX CAPSCREW	2	11-0533
4	5/16 X 3/4 NC HEX CAPSCREW	4	11-0596
5	3/8 NC NYLOCK NUT	2	11-1024
6	HOSE, 3/16 FUEL LINE (SOLD/FT)	5	21-0026
7	CLAMP, WORM GEAR	4	21-0027
8	FLUSH TANK BRACKET	1	41-1094

REF#	PARTS DESCRIPTION	REQ	PART #
9	POLY REDUCER BUSHING, 1/2FP X 1/4MP	3	80-2101
10	POLY REDUCER BUSHING, 3/4 X 1/2FP	1	80-2103
11	3 GALLON FLUSH TANK	1	80-2104
12	1/4NPT X 3/16 BARBED-90DEG, ADAPTER	3	80-2540
13	WETBLADE CONTROL SYSTEM-LOW FLOW	1	80-6012
14	ANALOG CONTROL ASSEMBLY	1	063-0173-592
15	CARTRIDGE, INTAKE	2	80-6020
16	CARTRIDGE, DISCHARGE	2	80-6021

WETBLADE™ SYSTEM MOUNT - DRAWBAR



REF#	PARTS DESCRIPTION	REQ	PART #
1	3/8 LOCK WASHER GR5	4	11-0005
2	3/8 X 1 NC HEX CAPSCREW	12	11-0532
3	7/16 X 2-1/4 NC SHCS	1	11-0927
4	7/16 NC HEX NUT	1	11-1002
5	3/8 NC NYLOCK NUT	8	11-1024

REF#	PARTS DESCRIPTION	REQ	PART #
6	LYNCH PIN, 7/16 X 2	1	27-1005
7	DRAWBAR PIN	1	27-1017
8	HITCH TENSIONER/WETBLADE	1	80-3502
9	DRAWBAR SPACER	1	80-3503
10	DRAWBAR WETBLADE MOUNT	1	80-3545

(PAGE INTENTIONALLY BLANK)



**100% SATISFACTION
GUARANTEE**
★ GET IT, LOVE IT, *or* LEAVE IT! ★

**72-HOUR PARTS
SHIPPING GUARANTEE**