



PARTS BOOK

EXCAVATOR HEADS

• FORESTRY •

DIAMOND MOWERS, Inc.
350 E 60th St. North
Sioux Falls, SD 57104

FOR WARRANTY CALL DIAMOND MOWERS DIRECT:
888-960-0364

OUR TECHNICIANS WILL DIAGNOSE YOUR SITUATION
OVER THE PHONE TO GET YOU UP AND RUNNING QUICKLY.

Phone: 605-977-3300
Fax: 605-655-5870
www.diamondmowers.com

DEMAND BRILLIANCE.

© DIAMOND MOWERS, INC.



Foreword

This manual contains the parts breakdown and identification of the various components and structures that make up your mower implement.

The illustrations, drawings, and diagrams in this manual are based on the latest information available at the time of publication. Your machine may have product improvements and features not yet contained in this parts manual.

Diamond Mowers Inc. reserves the right to make changes at any time without notice or obligation.

Diamond Mowers Inc.[™] and Wetblade[™] are trademarks of Diamond Mowers Inc.

This manual should be consulted prior and while assembling the unit, and anytime parts or assembly clarification is needed.

Copyright© 2016 Diamond Mowers Inc.

All rights reserved. While every precaution has been taken in the preparation of this manual, the publisher assumes no responsibility for errors or omissions. No part of this book covered by the copyrights heron may be reproduced or copied in any form or by any means - graphic, electronic, or mechanical, including photocopying, taping, or information storage and retrieval systems - without written permission of the publisher.



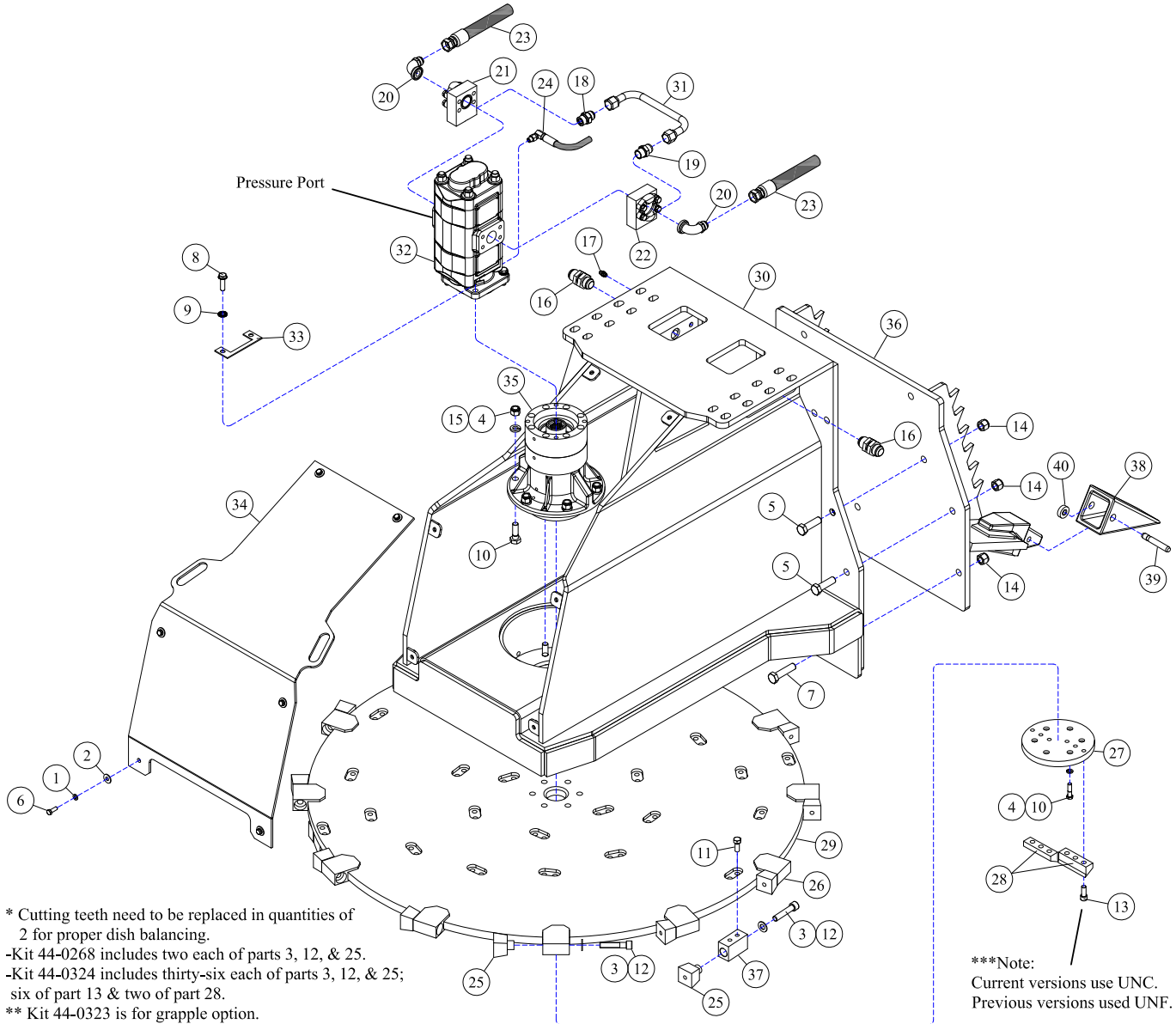
Table of Contents

FORESTRY HEADS	4
FORESTRY HEADS - 60" DIRECT DRIVE	5
FORESTRY HEADS - 48" DIRECT DRIVE	6
FORESTRY HEADS - 36" DIRECT DRIVE	7
DRIVE ASSEMBLIES	8
HOW TO DETERMINE YOUR MOTOR PART NUMBER	9
DRIVE ASSEMBLY - 60"	10
DRIVE ASSEMBLY - 48"	11
DRIVE ASSEMBLY - 36"	12
DECK ASSEMBLIES	13
30-0524 - MOTOR ASSEMBLY	14
30-0536 - MOTOR ASSEMBLY	15
30-0538 - MOTOR ASSEMBLY	16
35-0088 - DIRECT DRIVE SPINDLE	17

FORESTRY HEADS



FORESTRY HEADS - 60" DIRECT DRIVE

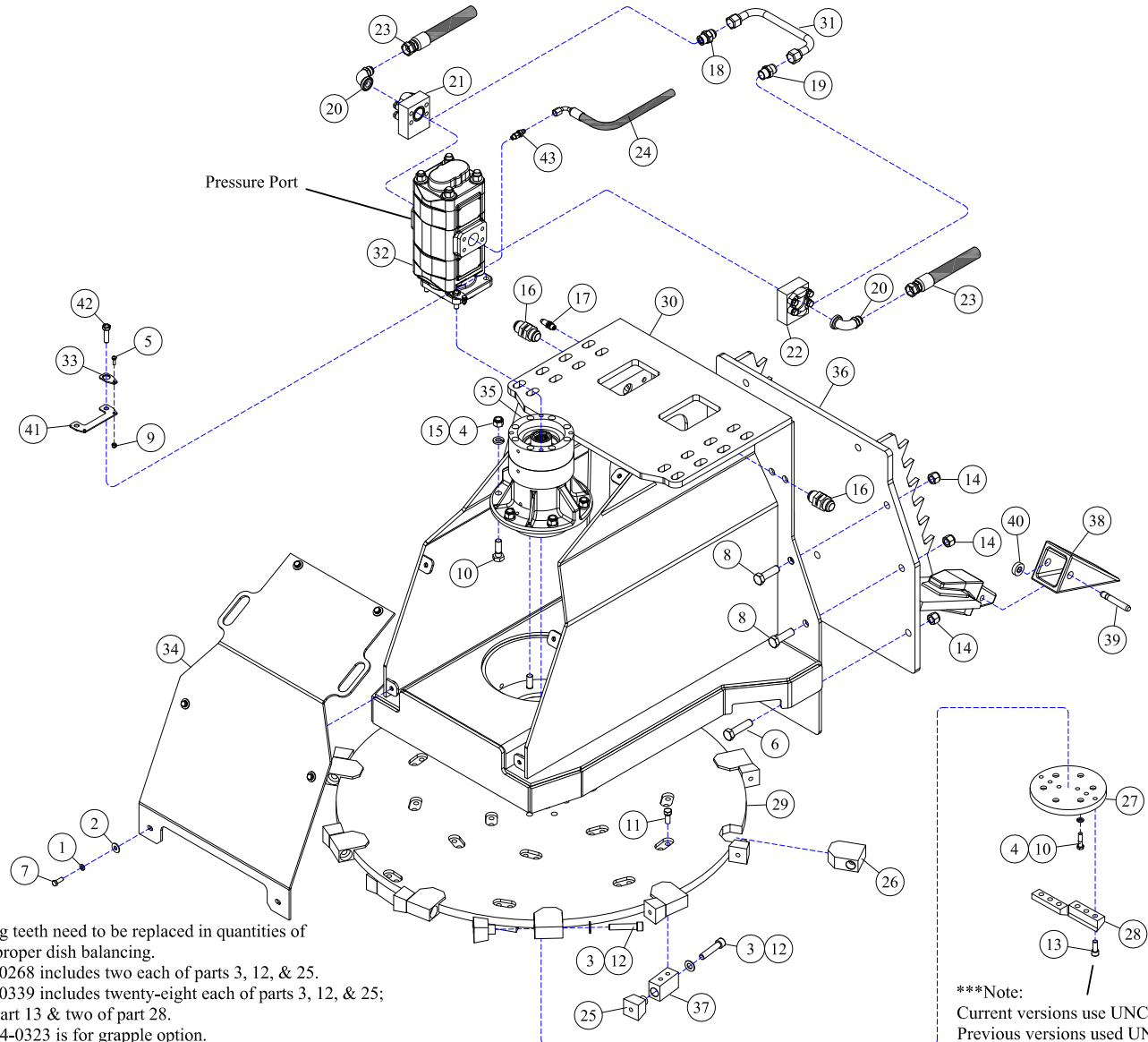


* Cutting teeth need to be replaced in quantities of 2 for proper dish balancing.
 -Kit 44-0268 includes two each of parts 3, 12, & 25.
 -Kit 44-0324 includes thirty-six each of parts 3, 12, & 25; six of part 13 & two of part 28.
 ** Kit 44-0323 is for grapple option.

REF#	PARTS DESCRIPTION	REQ	PART #
1	3/8 LOCK WASHER GR 5 CLEAR	6	11-0005
2	3/8 FLAT WASHER GR 5 CLEAR	6	11-0009
3	1/2 SAE FLAT WASHER GR 8 YELLOW	36	11-0042
4	5/8 LOCK WASHER GR 8 YELLOW	12	11-0043
5	3/4 X 3-1/2 H.S. NC HEX CAP	5	11-0792
6	3/8 X 1-1/4 NC HEX CAP	6	11-0533
7	3/4 X 3 H.S. NC HEX CAPSCREW	4	11-0900
8	1/2 X 1-3/4 H.S. NF FLANGE HEX CAP GR8	4	11-0941
9	1/2 WIDE NORDLOCK LOCK WASHERS	4	11-0942
10	5/8 X 2-1/4 H.S. NF HEX CAP	12	11-0691
11	1/2 X 1 NF HEX CAP GR 5	48	11-0639
12	1/2 X 3 NF SHCS	36	11-0929
13	***PLANER BOLTS		
	1/2 X 1-1/4 NC SHCS (current version)	6	11-0965
	1/2 X 1-1/4 NF SHCS (previous version)	6	11-0934
14	3/4 H.S. NC STOVER NUT	9	11-1038
15	5/8 H.S. NF STOVER NUT	6	11-1143
16	1" MJIC X 1" MJIC BULKHEAD ADAPTER	2	21-1283
17	5/16" JIC BULKHEAD ADAPTER	1	21-1305
18	CHECK VALVE	1	21-1474
19	3/4 MORB X 3/4 MJIC, ADAPTER	1	21-1475

REF#	PARTS DESCRIPTION	REQ	PART #
20	#20FLG X 1MJIC 90DEG SWEEP	2	21-1529
21	CROSS OVER MANIFOLD KIT	1	21-2180
22	TEE MANIFOLD KIT	1	21-2181
23	HOSE 1 X 35 (1FJIC X 1FJIC-90DEG)	2	21-3920
24	HOSE 1/4 X 47 (1/4MORB-90DEG X 5/16FJIC)	1	21-4208
25	*STEEL CUTTING TOOTH	36	22-0019
26	TOOTH HOLDER	12	P24-0186-12
27	FBC, BOLT PROTECTOR	1	24-0191
28	FBC, CENTER PLANER	2	24-0192
29	60" FORESTRY BRUSH CUTTER COMPLETE	1	24-0202
30	60" FORESTRY BRUSH CUTTER DECK	1	25-0185
31	RUN-A-ROUND TUBE	1	28-0051
32	TANDEM GEAR MOTOR 400 SERIES	1	30-0536
33	LOCKING TAB	2	31-0393
34	60" FORESTRY BRUSH CUTTER COVER	1	31-0415
35	SPINDLE ASSEMBLY - SPLINE	1	35-0088
36	**FBC, GRAPPLE ADAPTER	1	49-0073
37	TOOTH HOLDER	24	90-7034
38	BUCKET TOOTH	3	3000-21
39	PIN	3	3000-22
40	RETAINER WASHER	3	3000-23

FORESTRY HEADS - 48" DIRECT DRIVE



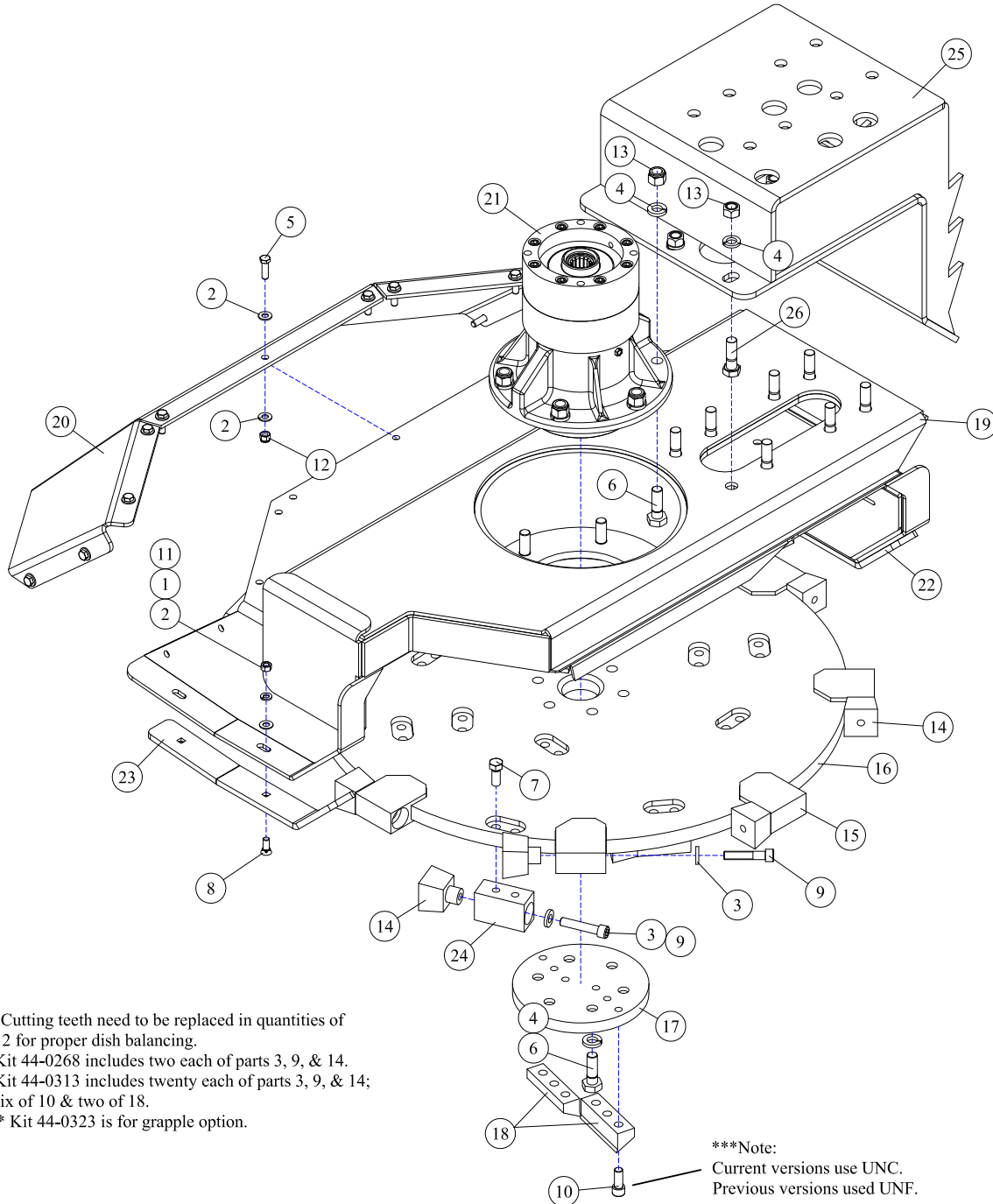
* Cutting teeth need to be replaced in quantities of 2 for proper dish balancing.
 -Kit 44-0268 includes two each of parts 3, 12, & 25.
 -Kit 44-0339 includes twenty-eight each of parts 3, 12, & 25; six of part 13 & two of part 28.
 ** Kit 44-0323 is for grapple option.

***Note:
 Current versions use UNC.
 Previous versions used UNF.

REF#	PARTS DESCRIPTION	REQ	PART #
1	3/8 LOCK WASHER GR 5 CLEAR	6	11-0005
2	3/8 FLAT WASHER GR 5 CLEAR	6	11-0009
3	1/2 SAE FLAT WASHER GR 8 YELLOW	28	11-0042
4	5/8 LOCK WASHER GR 8 YELLOW	12	11-0043
5	1/4 X 3/4 NC HEX CAP	4	11-0588
6	3/4 X 3-1/2 H.S. NC HEX CAP	3	11-0792
7	3/8 X 1-1/4 NC HEX CAP	6	11-0533
8	3/4 X 3 H.S. NC HEX CAPSCREW	6	11-0900
9	1/4 NC NYLOCK NUT	4	11-1022
10	5/8 X 2-1/4 H.S. NF HEX CAP	12	11-0691
11	1/2 X 1 NF HEX CAP GR 5	36	11-0639
12	1/2 X 3 NF SHCS	28	11-0929
13	***PLANER BOLTS		
	1/2 X 1-1/4 NC SHCS (current version)	6	11-0965
	1/2 X 1-1/4 NF SHCS (previous version)	6	11-0934
14	3/4 H.S. NC STOVER NUT	9	11-1038
15	5/8 H.S. NF STOVER NUT	6	11-1143
16	1" MJIC X 1" MJIC BULKHEAD ADAPTER	2	21-1283
17	3/8" JIC BULKHEAD ADAPTER	1	21-1581
18	CHECK VALVE	1	21-1474
19	3/4 MORB X 3/4 MJIC, ADAPTER	1	21-1475
20	#20FLG X 1MJIC 90DEG SWEEP	2	21-1529
21	CROSS OVER MANIFOLD KIT	1	21-2180
22	TEE MANIFOLD KIT	1	21-2181

REF#	PARTS DESCRIPTION	REQ	PART #
23	HOSE 1 X 35 (1FJIC X 1FJIC-90DEG)	2	21-3920
24	HOSE 3/8 X 50 (3/8FJIC X 3/8FJIC-90DEG)	1	21-4293
25	*STEEL CUTTING TOOTH	28	22-0019
26	TOOTH HOLDER	10	P24-0186-12
27	FBC, BOLT PROTECTOR	1	24-0191
28	FBC, CENTER PLANER	2	24-0192
29	48" FORESTRY BRUSH CUTTER		
	WITHOUT TEETH	1	24-0242
	WITH TEETH	1	24-0244
30	48" FORESTRY BRUSH CUTTER DECK	1	25-0186
31	RUN-AROUND TUBE	1	28-0051
32	TANDEM GEAR MOTOR 400 SERIES	1	30-0536
33	MOTOR BOLT LOCK TAB	4	31-0503
34	48" FORESTRY BRUSH CUTTER COVER	1	31-0435
35	SPINDLE ASSEMBLY - SPLINE	1	35-0088
36	**FBC, GRAPPLE ADAPTER	1	49-0073
37	TOOTH HOLDER	18	90-7034
38	BUCKET TOOTH	3	3000-21
39	PIN	3	3000-22
40	RETAINER WASHER	3	3000-23
41	MOTOR BOLT LOCK BASE	2	31-0504
42	1/2-20 X 1-3/4 H.S. NF HEX CAP GR.8	4	11-0664
43	ADAPTER, 1/4MOR X 3/8MJIC	1	21-1597

FORESTRY HEADS - 36" DIRECT DRIVE



* Cutting teeth need to be replaced in quantities of 2 for proper dish balancing.
 -Kit 44-0268 includes two each of parts 3, 9, & 14.
 -Kit 44-0313 includes twenty each of parts 3, 9, & 14; six of 10 & two of 18.
 ** Kit 44-0323 is for grapple option.

***Note:
 Current versions use UNC.
 Previous versions used UNF.

REF#	PARTS DESCRIPTION	REQ	PART #
1	3/8 LOCK WASHER GR 5 CLEAR	6	11-0005
2	5/16 FLAT WASHER GR 5 CLEAR	28	11-0015
3	1/2 SAE FLAT WASHER GR 8 YELLOW	20	11-0042
4	5/8 LOCK WASHER GR 8 YELLOW	20	11-0043
5	3/8 X 1-1/4 NC HEX CAP	11	11-0533
6	5/8 X 2-1/4 H.S. NF HEX CAP	12	11-0691
7	1/2 X 1 NF HEX CAP GR 5	24	11-0639
8	3/8 X 1-1/4 NC PLOW BOLT	6	11-0804
9	1/2 X 3 NF SHCS	20	11-0929
10	***PLANER BOLTS		
	1/2 X 1-1/4 NC SHCS (current version)	6	11-0965
	1/2 X 1-1/4 NF SHCS (previous version)	6	11-0934
11	3/8 NC HEX NUT	6	11-1001
12	3/8 NC NYLOCK NUT	11	11-1024

REF#	PARTS DESCRIPTION	REQ	PART #
13	5/8 H.S. NF STOVER NUT	14	11-1143
14	*STEEL CUTTING TOOTH	20	22-0019
15	TOOTH HOLDER - REPLACEMENT	AVAIL.	P24-0186-12
16	36" FORESTRY BRUSH CUTTER COMPLETE	1	24-0203
17	MULCHER, BOLT PROTECTOR	1	24-0191
18	MULCHER, CENTER PLANER	2	24-0192
19	36" FORESTRY BRUSH CUTTER SHELL	1	25-0183
20	BOLT ON REAR GUARD, 36" FBC	1	31-0426
21	SPINDLE ASSEMBLY - SPLINE	1	35-0088
22	36" SA W DECK, LEFT SHOE	1	42-0044
23	36" SA W DECK, RIGHT SHOE	1	42-0045
24	TOOTH HOLDER	12	90-7034
25	**36" FBC GRAPPLE ADAPTER	1	49-0079
26	5/8 X 2 H.S. NF HEX CAP	8	11-0508

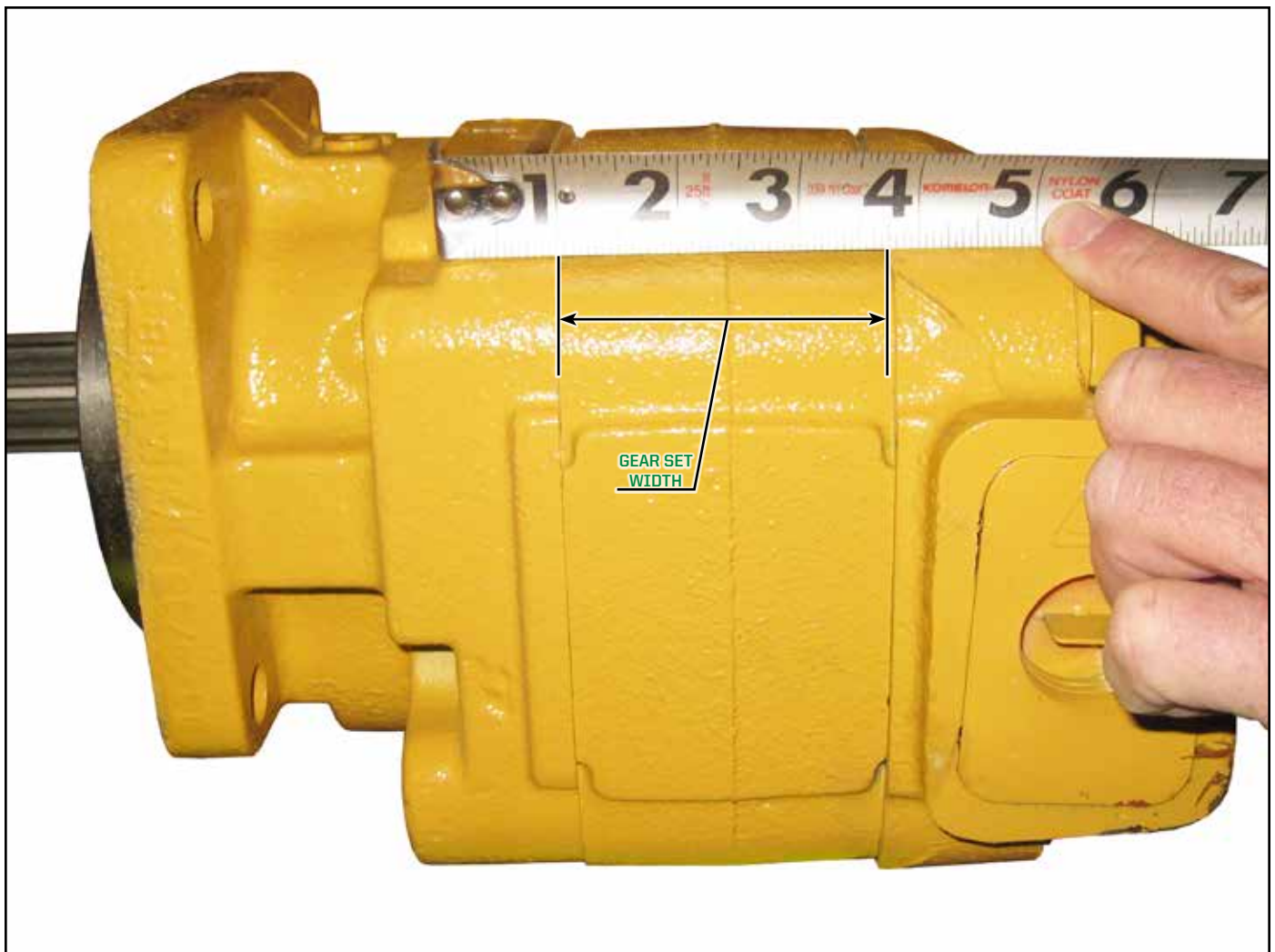
DRIVE ASSEMBLIES



HOW TO DETERMINE YOUR MOTOR PART NUMBER

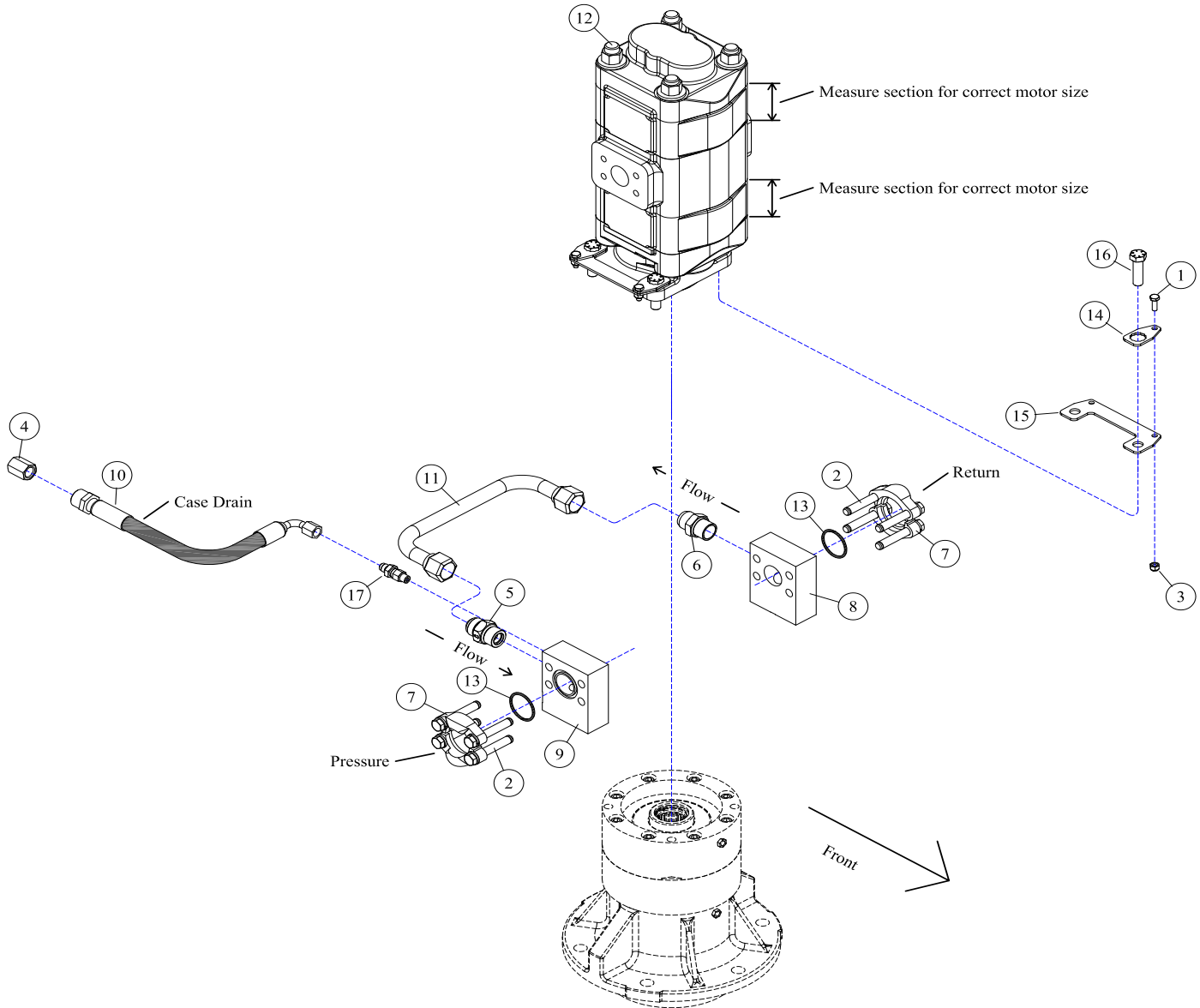
Note: The following parts pages in the **DRIVE ASSEMBLIES** section have multiple motor options; to identify which motor you have, follow the instructions below: you will have to first determine your vehicles hydraulic oil GPM requirements (i.e. 16-41gpm).

- ▷ Determine what your hydraulic oil flow requirements are for your vehicle in gallons per minute (GPM).
- ▷ Locate the **Drive Assemblies** page in the table of contents in the front of this manual that has a GPM range consistent with your vehicle's GPM requirements, and go to that page. Locate your motor part number.
- ▷ If multiple motor options and part numbers are available on your parts page, measure the width of the gear set portion of your motor to determine which part number is correct for your motor. Measure the gear set as shown in the illustration below *(see Figure 1)*.



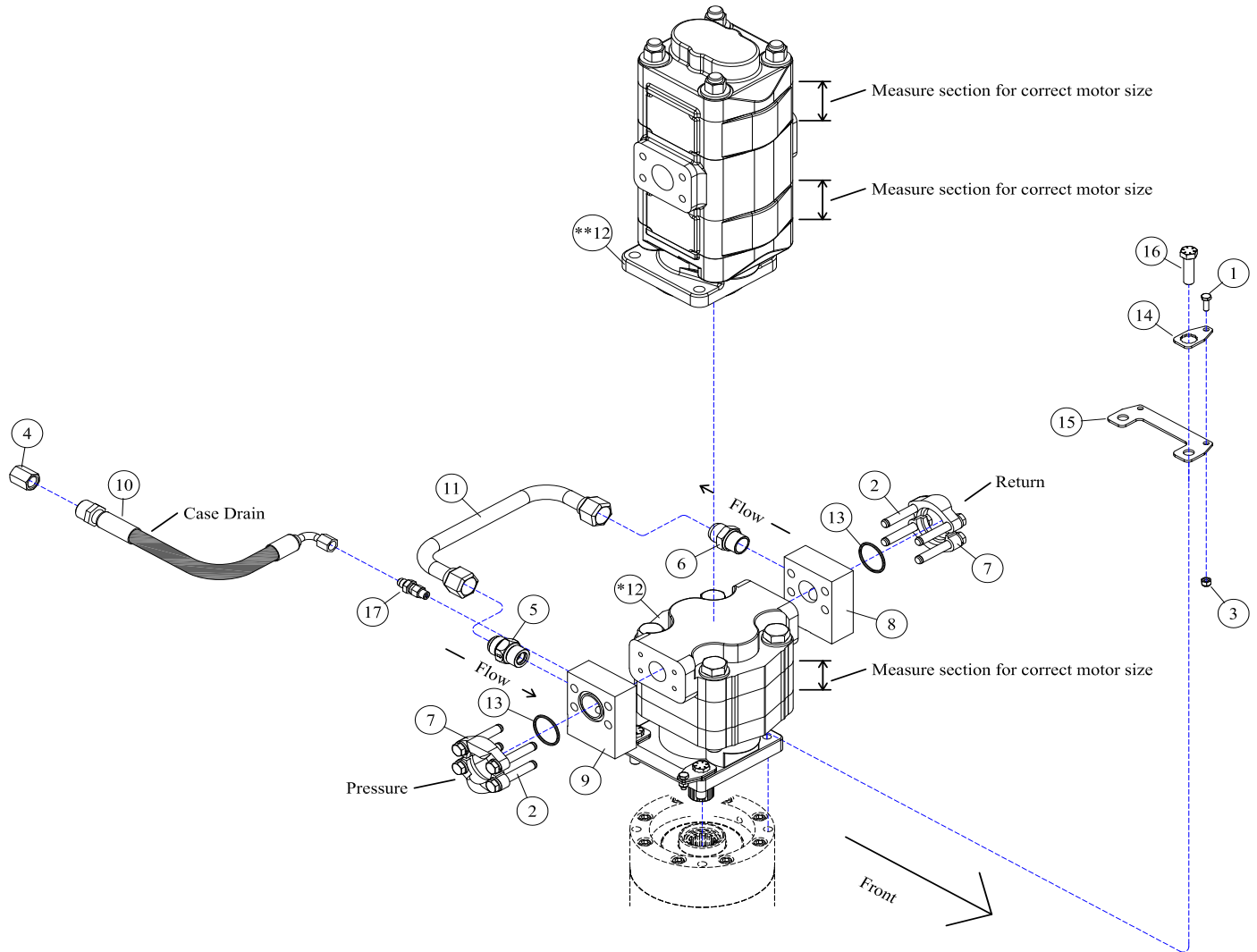
Motor - (Figure 1)

DRIVE ASSEMBLY - 60"



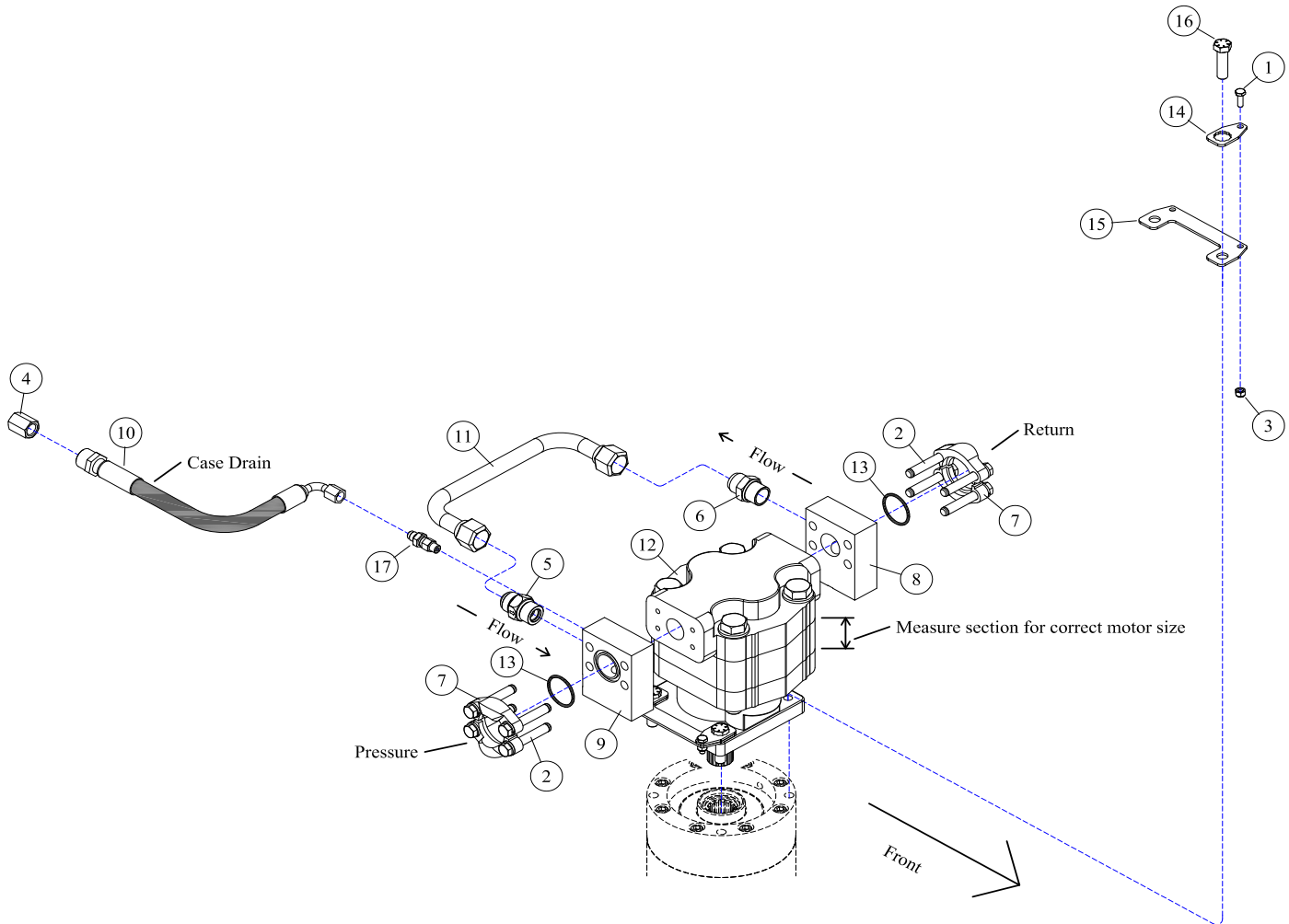
REF#	PARTS DESCRIPTION	REQ	PART #
1	1/4 X 3/4 NC HEX CAP	4	11-0588
2	7/16 X 3 NC HEX CAPSCREW (included with #8 & 9)	4	11-0587
3	1/4 NC NYLOCK NUT	4	11-1022
4	3/8FJIC CAP NUT	1	21-1582
5	CHECK VALVE	1	21-1474
6	3/4 MORB X 3/4 MJIC ADAPTER	1	21-1475
7	#20 FLANGE KIT (included with #8 & 9)	2	21-2105
8	CROSS OVER MANIFOLD KIT (includes #2,7 & 13)	1	21-2180
9	TEE MANIFOLD KIT (includes #2,7 & 13)	1	21-2181
10	HOSE 3/8 X 50 (3/8FJIC X 3/8FJIC-90DEG)	1	21-4293
11	RUN-AROUND TUBE	1	28-0051
12	MOTOR		
	TANDEM GEAR, M365, 1" GEAR SETS, 1-1/2" SECT, 50-60 GAL/MIN	1	30-0538
	TANDEM GEAR, M365, 1-1/2" GEAR SETS, 2" SECT, 61-80 GAL/MIN	1	30-0536
13	O-RING (included with #7, 8 & 9)	2	33-0013
14	MOTOR BOLT LOCK TAB	4	31-0503
15	MOTOR BOLT LOCK BASE	2	31-0504
16	1/2-20 X 1-3/4 H.S. NF HEX CAP GR.8	4	11-0664
17	ADAPTER, 1/4MOR X 3/8MJIC	1	21-1597

DRIVE ASSEMBLY - 48"



REF#	PARTS DESCRIPTION	REQ	PART #
1	1/4 X 3/4 NC HEX CAP	4	11-0588
2	7/16 X 3 NC HEX CAPSCREW (included with #8 & 9)	4	11-0587
3	1/4 NC NYLOCK NUT	4	11-1022
4	3/8FJIC CAP NUT	1	21-1582
5	CHECK VALVE	1	21-1474
6	3/4 MORB X 3/4 MJIC ADAPTER	1	21-1475
7	#20 FLANGE KIT (included with #8 & 9)	2	21-2105
8	CROSS OVER MANIFOLD KIT (includes #2,7 & 13)	1	21-2180
9	TEE MANIFOLD KIT (includes #2,7 & 13)	1	21-2181
10	HOSE 3/8 X 50 (3/8FJIC X 3/8FJIC-90DEG)	1	21-4293
11	RUN-AROUND TUBE	1	28-0051
12	MOTOR		
*	M365, 2-1/4" GEAR SET, 2-3/4" SECT, 40-50 GAL/MIN	1	30-0524
*	M365, 2-1/2" GEAR SET, 3" SECT, 50-58 GAL/MIN	1	30-0518
**	TANDEM GEAR, M365, 1" GEAR SETS, 1-1/2" SECT, 59-67 GAL/MIN	1	30-0538
**	TANDEM GEAR, M365, 1-1/2" GEAR SETS, 2" SECT, 68-80 GAL/MIN	1	30-0536
13	O-RING (included with #7, 8 & 9)	2	33-0013
14	MOTOR BOLT LOCK TAB	4	31-0503
15	MOTOR BOLT LOCK BASE	2	31-0504
16	1/2-20 X 1-3/4 H.S. NF HEX CAP GR.8	4	11-0664
17	ADAPTER, 1/4MOR X 3/8MJIC	1	21-1597

DRIVE ASSEMBLY - 36"

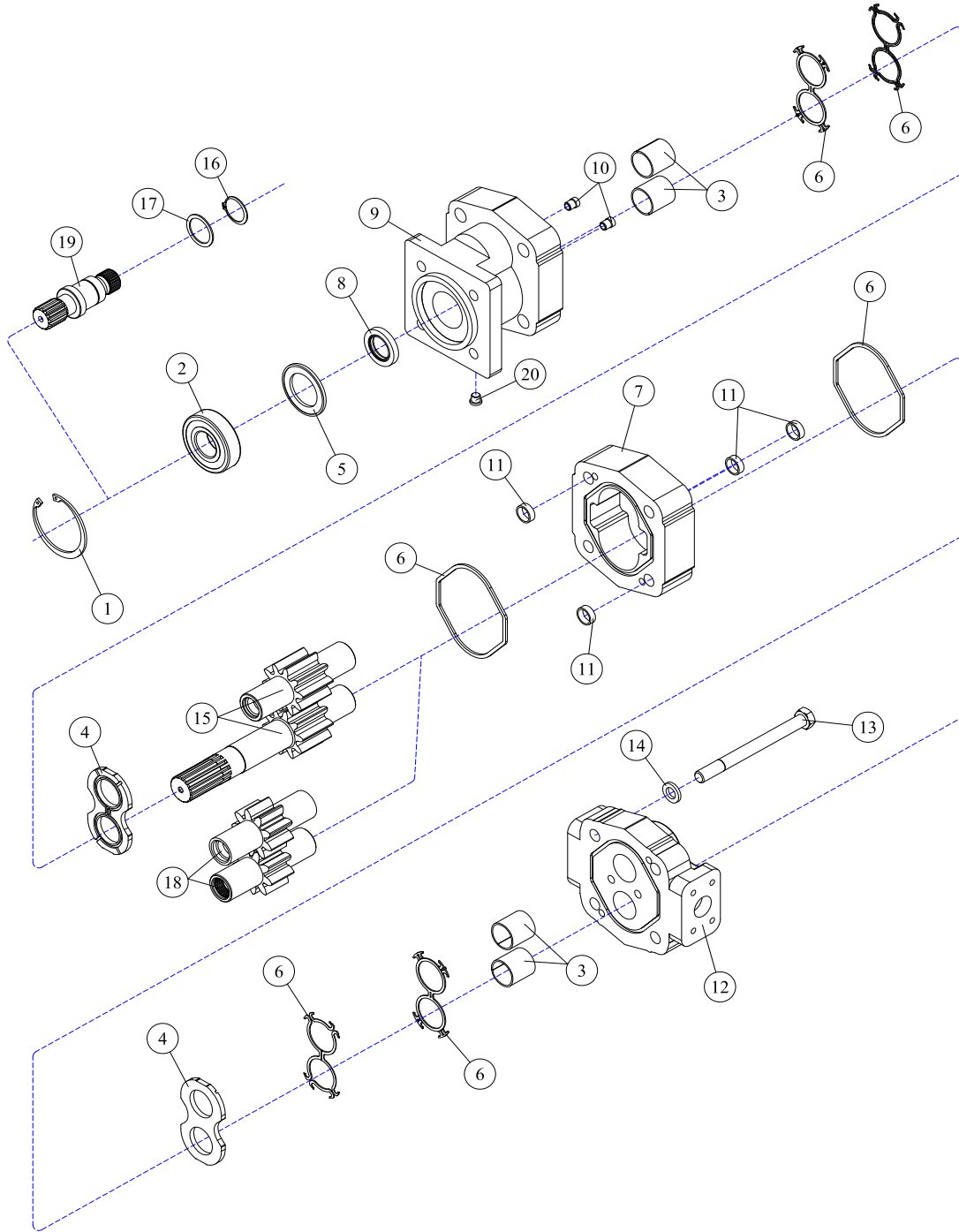


REF#	PARTS DESCRIPTION	REQ	PART #
1	1/4 X 3/4 NC HEX CAP	4	11-0588
2	7/16 X 3 NC HEX CAPSCREW (included with #8 & 9)	4	11-0587
3	1/4 NC NYLOCK NUT	4	11-1022
4	3/8FJIC CAP NUT	1	21-1582
5	CHECK VALVE	1	21-1474
6	3/4 MORB X 3/4 MJIC ADAPTER	1	21-1475
7	#20 FLANGE KIT (included with #8 & 9)	2	21-2105
8	CROSS OVER MANIFOLD KIT (includes #2,7 & 13)	1	21-2180
9	TEE MANIFOLD KIT (includes #2,7 & 13)	1	21-2181
10	HOSE 3/8 X 24 (3/8FJIC 90DEG X 3/8MJIC)	1	21-4291
11	RUN-AROUND TUBE	1	28-0051
12	MOTOR		
	M365, 1" GEAR SET, 24-28 GPM	1	30-0514
	M365, 1-1/4" GEAR SET, 29-32 GPM	1	30-0532
13	O-RING (included with #7, 8 & 9)	2	33-0013
14	MOTOR BOLT LOCK TAB	4	31-0503
15	MOTOR BOLT LOCK BASE	2	31-0504
16	1/2-20 X 1-3/4 H.S. NF HEX CAP GR.8	4	11-0664
17	ADAPTER, 1/4MOR X 3/8MJIC	1	21-1597

DECK ASSEMBLIES



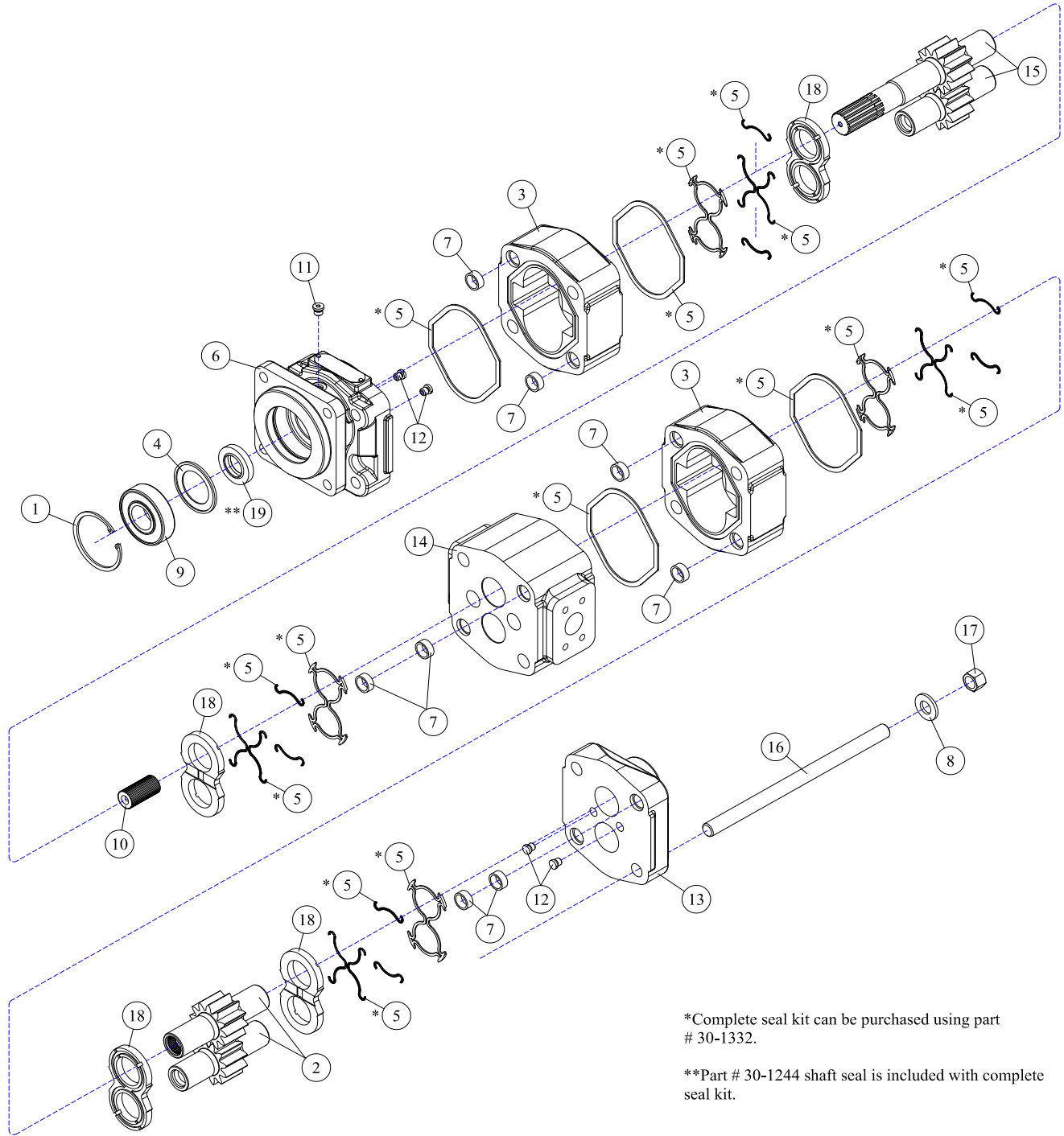
30-0524 - MOTOR ASSEMBLY



REF#	PARTS DESCRIPTION	REQ	PART #
1	SNAP RING	1	30-1009
2	OUTBOARD BEARING	1	30-1010
3	BUSHING	4	30-1011
4	THRUST PLATE	2	30-1012
5	SEAL RETAINER	1	30-1017
6	M365 SEAL KIT	Avail	30-1021
7	2-1/4" M365 GEAR HOUSING	1	30-1026
8	SHAFT SEAL		
	150 PSI (included in M365 seal kit)	1	30-1210
	500 PSI	1	30-1156
9	SHAFT END COVER	1	30-1086
10	CHECK ASSEMBLY	2	30-1087
11	ALIGNMENT BUSHING	4	30-1090

REF#	PARTS DESCRIPTION	REQ	PART #
12	PORT END COVER	1	30-1091
13	STUD	4	Call
14	WASHER	4	30-1093
	GEAR SET OPTION A:		
15	2-1/4" GEAR SET	1	30-1165
	GEAR SET OPTION B:		
16	RETAINING RING	1	30-1019
17	WASHER	1	30-1020
18	2-1/4" GEAR SET	1	30-1025
19	CONTINENTAL SHAFT, SPLINED	1	30-1144
20	PLUG	1	30-1096
*	SEAL APPLICATOR TOOL (not shown)	Avail	30-1048

30-0536 - MOTOR ASSEMBLY



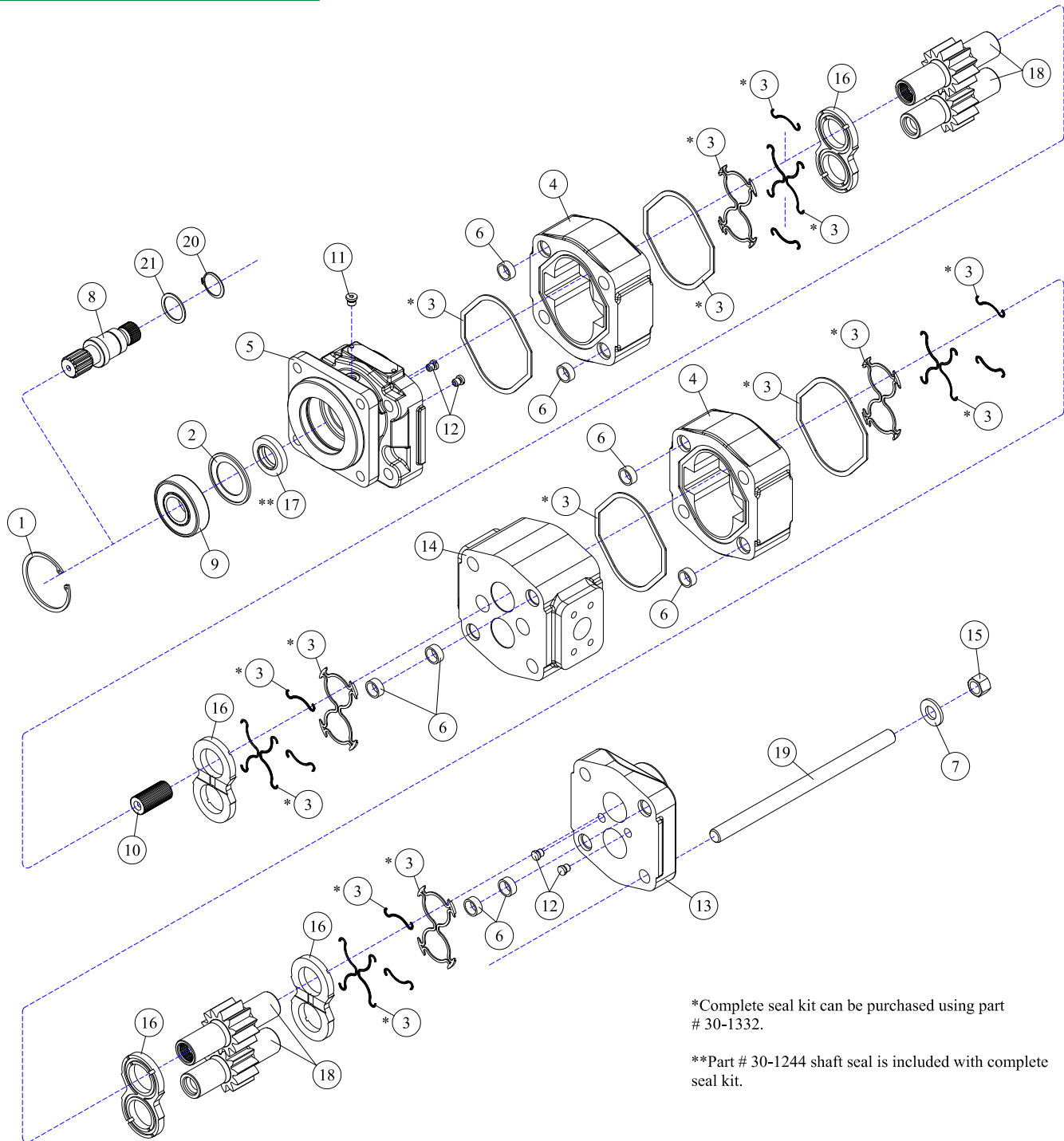
*Complete seal kit can be purchased using part # 30-1332.

**Part # 30-1244 shaft seal is included with complete seal kit.

REF#	PARTS DESCRIPTION	REQ	PART #
1	SNAP RING	1	30-1009
2	GEAR SET	1	30-1014
3	GEAR HOUSING	2	30-1016
4	SEAL RETAINER	1	30-1017
5	*SEAL KIT (also includes 30-1244)	Avail	30-1332
6	SHAFT END COVER HOUSING	1	30-1075
7	DOWEL PIN	8	30-1090
8	WASHER	4	30-1093
9	BALL BEARING	1	30-1173
10	CONNECTOR SHAFT	1	30-1176

REF#	PARTS DESCRIPTION	REQ	PART #
11	PLUG	1	30-1220
12	CHECK ASSEMBLY	4	30-1228
13	PORT END COVER HOUSING	1	30-1231
14	BEARING CARRIER HOUSING	1	30-1233
15	SET, GEAR SHAFT	1	30-1235
16	STUD	4	30-1238
17	HEX NUT	4	30-1239
18	THRUST PLATE	4	30-1241
19	**SHAFT SEAL	1	30-1244
***	SEAL APPLICATOR TOOL (not shown)	Avail	30-1048

30-0538 - MOTOR ASSEMBLY



REF#	PARTS DESCRIPTION	REQ	PART #
1	SNAP RING	1	30-1009
2	SEAL RETAINER	1	30-1017
3	*SEAL KIT (also includes 30-1244)	Avail	30-1332
4	GEAR HOUSING	2	30-1023
5	SHAFT END COVER HOUSING	1	30-1075
6	DOWEL PIN	8	30-1090
7	WASHER	4	30-1093
8	CONTINENTAL SHAFT	1	30-1144
9	BALL BEARING	1	30-1173
10	CONNECTOR SHAFT	1	30-1176
11	PLUG	1	30-1220

REF#	PARTS DESCRIPTION	REQ	PART #
12	CHECK ASSEMBLY	4	30-1228
13	PORT END COVER HOUSING	1	30-1231
14	BEARING CARRIER HOUSING	1	30-1233
15	HEX NUT	4	30-1239
16	THRUST PLATE	4	30-1241
17	**SHAFT SEAL	1	30-1244
18	GEAR SET	2	30-1251
19	STUD	4	30-1253
20	RETAINING RING	1	30-1019
21	WASHER	1	30-1020

35-0088 - DIRECT DRIVE SPINDLE

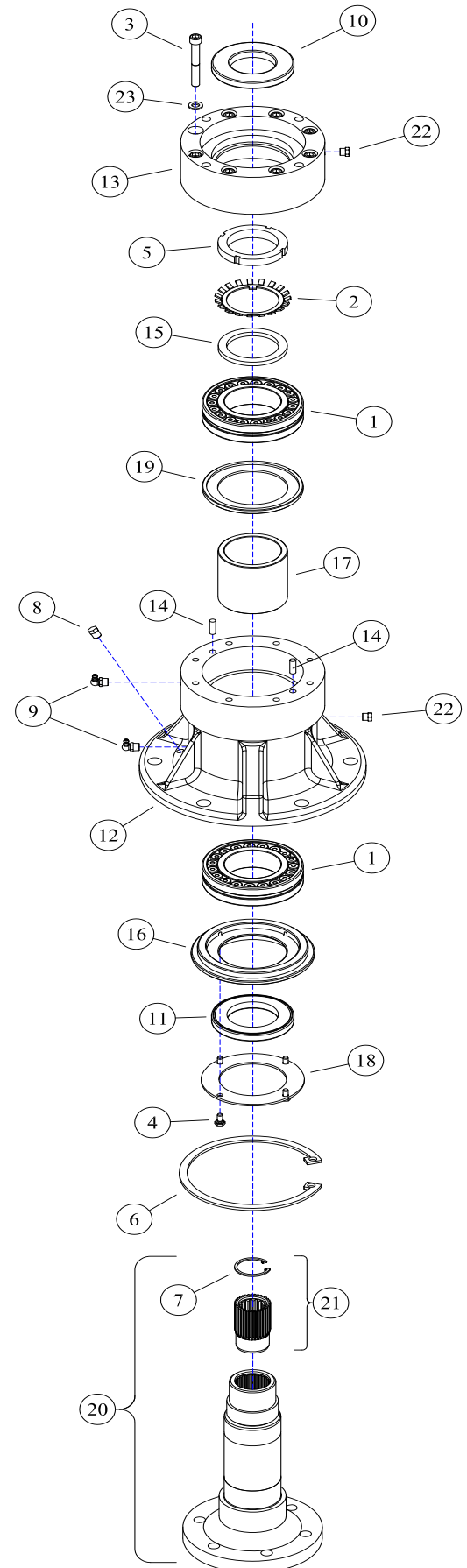
Grease with #2 lithium based grease every 500hrs.
Use 10 pumps (.44oz) into each of the two grease zerk.

Warning: Do not overgrease

Overgreasing will cause damage or premature failure of the bearings, housing & seals.

REF#	PARTS DESCRIPTION	REQ	PART #
1	BEARING	2	10-0055
2	LOCKING WASHER	1	11-0048
3	3/8 X 2-3/4 NC SKT HEAD CAPSCREW	8	11-0703
4	1/4 X 1/2 NC CAPSCREW	4	11-0741
5	2-1/2 SPANNER NUT	1	11-1037
6	LARGE SNAP RING	1	11-2021
7	SMALL SNAP RING	1	11-2022
8	PIPE PLUG	1	21-1136
9	1/8 X 90 GREASE ZERK	2	23-0005
10	UPPER SEAL	1	33-0035
11	LOWER SEAL	1	33-0057
12	SPINDLE HOUSING	1	35-0021
13	SEAL/MOTOR MOUNT	1	35-0022
14	ALIGNMENT PIN	2	35-0032
15	SPACER	1	35-0050
16	BOTTOM SEAL PLATE	1	35-0063
17	SPACER	1	35-0064
18	BOTTOM PLATE	1	35-0065
19	GREASE CATCH	1	35-0066
20	SPINDLE SHAFT COMPLETE	1	35-0090
*21	SPLINED INSERT KIT	1	35-0091
22	BREATHER	2	80-1016
23	3/8 LOCK WASHER GR 5	8	11-0005

* The splined insert kit includes the insert removal tool 11-0913.





**100% SATISFACTION
GUARANTEE**
★ GET IT, LOVE IT, *or* LEAVE IT! ★

**72-HOUR PARTS
SHIPPING GUARANTEE**